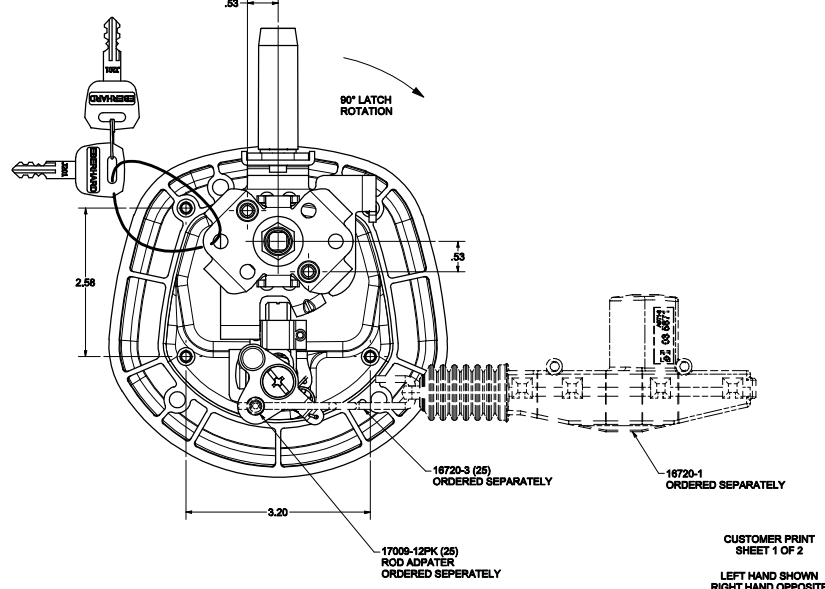
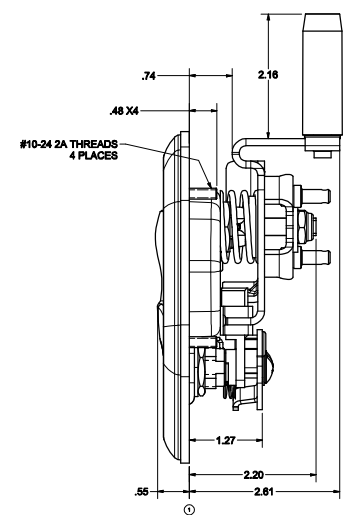
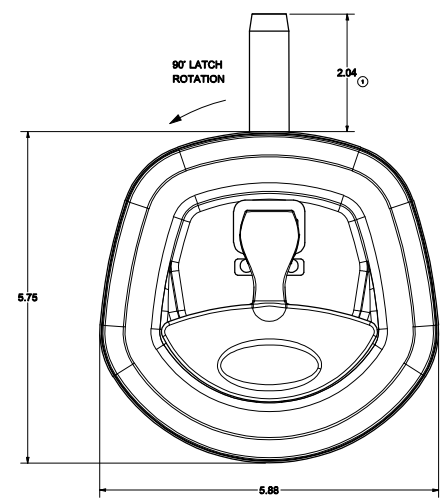
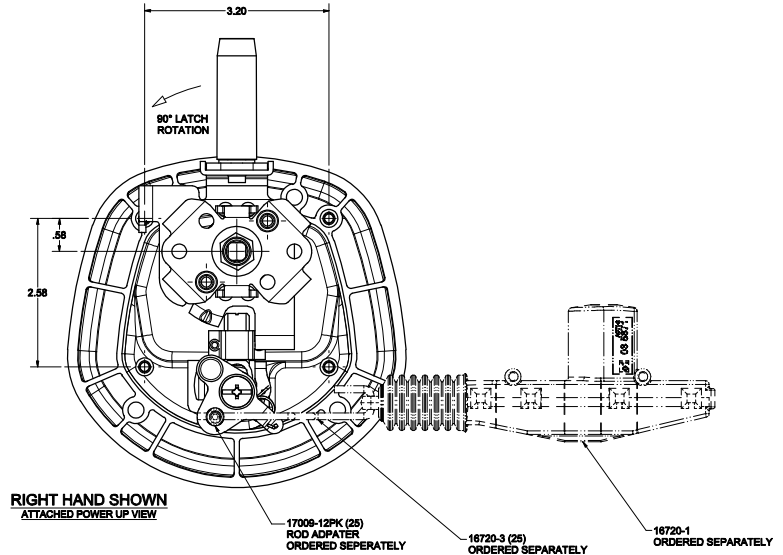
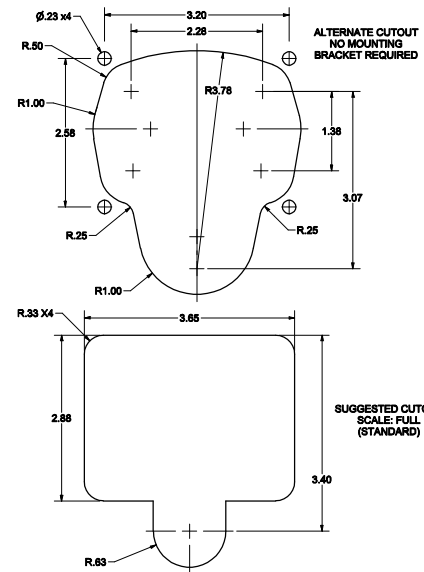
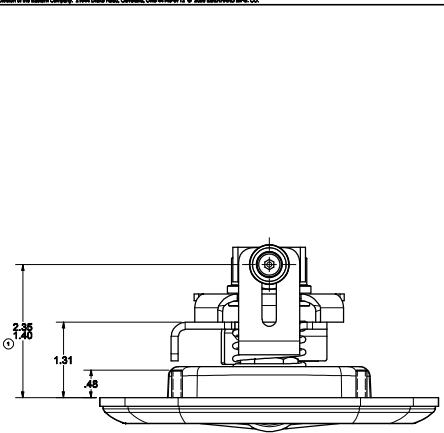


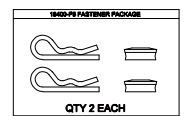
CONFIDENTIAL NOTICE: This drawing and the drawings specifications are confidential information and the property of Eberhard Manufacturing Company and will not be disclosed or reproduced without written permission of Eberhard Manufacturing Company. Eberhard Manufacturing Company reserves the right to change specifications without notice and without liability for any loss or damage.

REVISION HISTORY		BY	DATE	REASON	APPROVED
1	INITIAL TO PRODUCTION DWG. PART 1770A	RE: 1770	03/08	NEW	RE: 1770
2	REWORKED DIMENSIONS	RE: 1770	03/08	CHG	RE: 1770



- NOTES:
 1. FINISHES:
 A. BRIGHT POLISHED RECEPTACLE AND CHROME HANDLE: FC (03)
 B. BLACK POWDER (TEXTURED) RECEPTACLE AND HANDLE: FC (42)
 C. BLACK POWDER (TEXTURED) RECEPTACLE AND CHROME HANDLE: FC (35)
 2. 35 IN-LBS MAX. TORQUE ON MOUNTING STUDS
 3. KEY CYLINDER WITH 10 KEY CHANGES, J201 THRU J210
 SUPPLIED WITH TWO DOUBLE BITTED KEYS
 EXAMPLE ORDER AS: P6-28630-RL-D000-XX

FINISH CODE (SEE NOTE #1)
 KEY NUMBER



FASTENER PACKAGE CONTAINED IN P6-28430C-URL ONLY

ASSEMBLY PIN	MOUNTING BRACKET KIT PIN	FASTENER KIT
P6-28630-RL	NONE	NONE
P6-28630A-URL	28630A-80U	NONE
P6-28630B-URL	28630B-80U	NONE
P6-28630C-URL	28630C-80U	16400-P5

PATENTED

THE DOCUMENT IS UNCLASSIFIED

KEY LOCKING / PADLOCKABLE COMPRESSION LATCH - POWER LOCKING

EBERHARD MANUFACTURING CO.
 DIVISION OF
 THE EBERHARD COMPANY
 CLEVELAND, OHIO 44148-8112

CUSTOMER PRINT SHEET 1 OF 2
 LEFT HAND SHOWN
 RIGHT HAND OPPOSITE

PG-28630-RL

C:\working\user\tech\p628630-rl.cht.h1a.w