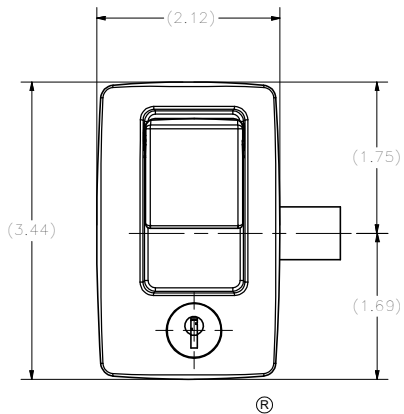
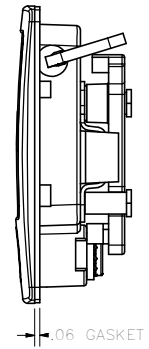


CONFIDENTIAL NOTICE: This drawing and the designs, specifications and engineering information disclosed hereon are the property of Eberhard Manufacturing Company and are not to be disseminated or reproduced without express written consent. The drawing is loaned in confidence and then only for consideration of the matter disclosed hereon. In accepting loan of this drawing, recipient agrees to keep it and the matter disclosed hereon in confidence and not to use nor permit their use in any way detrimental to Eberhard Manufacturing Company, Division of the Eastern Company, 21844 Drake Road, Cleveland, Ohio 44149-9712. © 2013 EBERHARD MFG. CO.

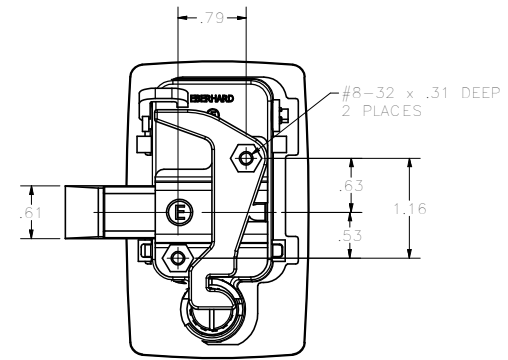
REVISION HISTORY			
REV	DESCRIPTION	EN	DATE
1	REVISED, REDRAWN AND CONVERTED TO 3D	9665	5-24-13



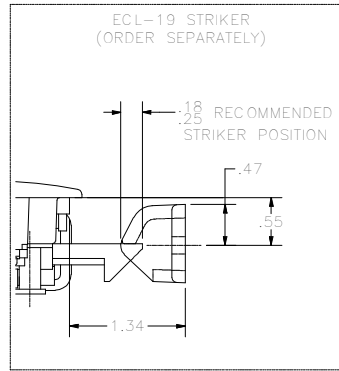
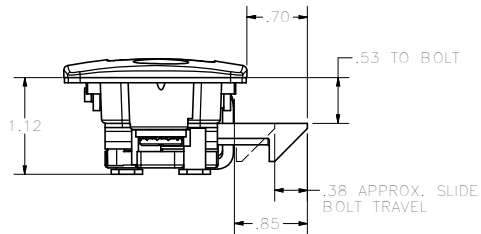
ECL-730-SK



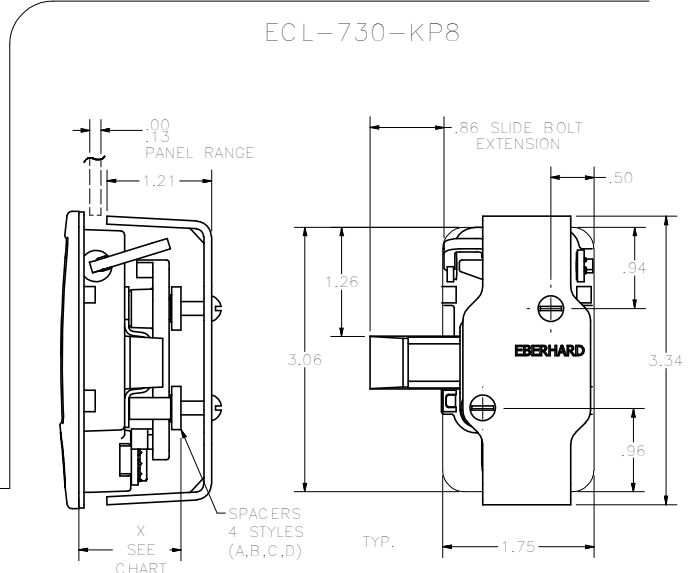
.06 GASKET



#8-32 x .31 DEEP
2 PLACES



ECL-19 STRIKER
(ORDER SEPARATELY)

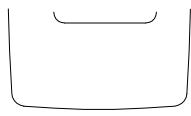


ECL-730-KP8

SPACERS
4 STYLES
(A,B,C,D)
TYP.

SUGGESTED OUTLINE
OF CUTOFF AND
MOUNTING BRACKET
CLEARANCE

PART NUMBER	DESCRIPTION
ECL-730/*-731	ASSEMBLY WITH GASKET (NON-KEY LOCKING)
ECL-730-P8/*-731-P8	ASSEMBLY WITH GASKET, MTG. BRKT, SPACERS & SCREWS
ECL-730-K/*-731-K	ASSEMBLY WITH GASKET (KEY LOCKING)
ECL-730-KP8/*-731-KP8	ASSEMBLY WITH GASKET, MTG. BRKT, SPACERS & SCREWS
1-ECL730-KP8	ASSEMBLY WITH GASKET AND SCREWS



NON LOCKING

SPACER	A	B	C	D
X DIM.	1.17	1.21	1.24	1.27

NOTE: TORQUE MTG. BRACKET
SCREWS TO 14 ±3 IN./LBS.

CUSTOMER PRINT
PATENTED
SHEET 1 OF 2

*ECL-731 SERIES: ASSEMBLY WITH "O" RINGS.

AVAILABLE FINISHES: MATT BLACK, FC (MB)
MATT WHITE, FC (MW)

eclipse AND RECEPTACLE ARE REGISTERED
TRADEMARKS OF EBERHARD MANUFACTURING CO.,
DIVISION OF EASTERN CO.

eclipse SERIES

EBERHARD MANUFACTURING CO.

THE EASTERN COMPANY
CLEVELAND, OHIO 44149-9712

UNLESS OTHERWISE SPECIFIED TOLERANCES ARE AS FOLLOWS:	DATE 5/24/2013
ANGLES:	SCALE
2 PLACE DEC. .05 .06	FULL
3 PLACE DEC. .015 .03	AS SHOWN
4 PLACE DEC. .005 .01	

PADDLE HANDLE ASSEMBLY KEY
LOCKING W/GASKET

Part Number: ECL-730

SUPERSEDES DRAWING ECL-730 CHART SHEET 1 OF 2 DATED 2-24-93.

C:\TEMP\764117-3766-49565-9f72-e6e3711b4457\ECL730 CH SH1.dwg