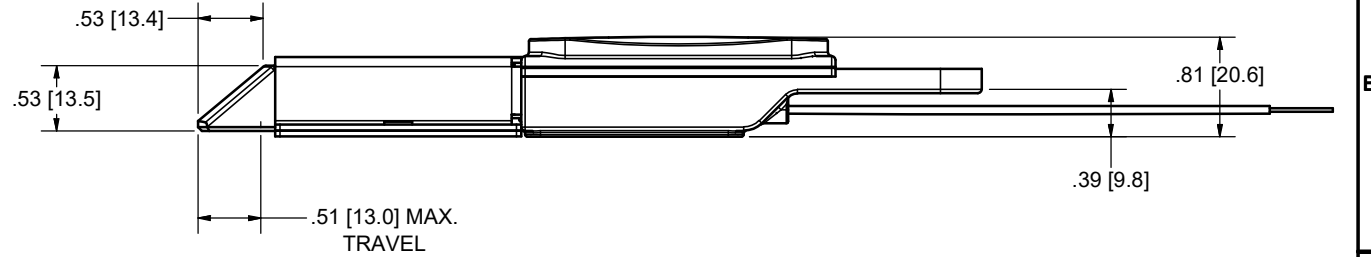
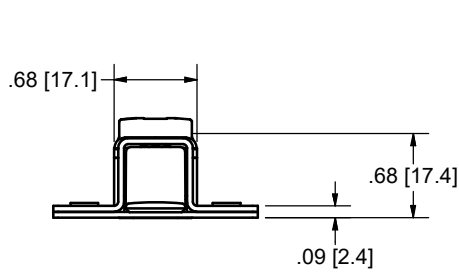
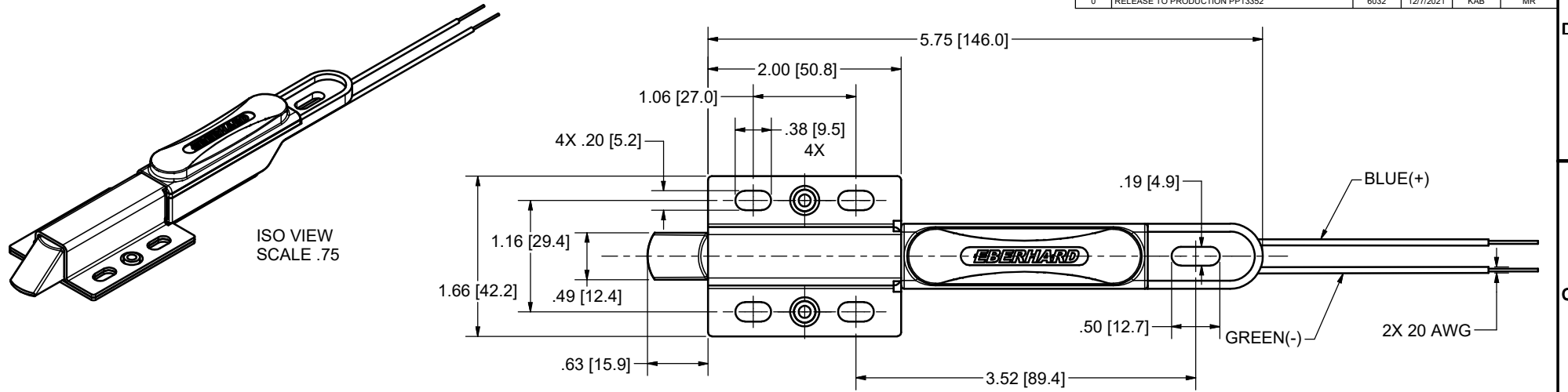


CONFIDENTIAL NOTICE: This drawing and the designs, specifications, and engineering information hereon are the property of Eberhard Manufacturing Company and are not to be disseminated or reproduced without express written consent. This drawing is loaned in confidence and then only for the consideration of the matter disclosed hereon. In accepting loan of this drawing, recipient agrees to keep it and the matter disclosed hereon in confidence and not to use or permit their use in any way detrimental to Eberhard Manufacturing Company, Division of The Eastern Company, 21944 Drake Road, Cleveland, Ohio, 44149-9712 © 2021 EBERHARD MFG. CO.

REVISION HISTORY					
REV	DESCRIPTION	EN	DATE	REV. BY	APVD. BY
0	RELEASE TO PRODUCTION PP13352	6032	12/7/2021	KAB	MR



- NOTES:
 1) 12VDC OPERATING VOLTAGE
 * CURRENT:
 - AT STALL - 850mA
 - OPERATIONAL - 110mA
 - TORQUE: 450g.cm
 2) ENVIRONMENTAL:
 * OPERATING TEMP: -10C - 60C
 3) WIRE LENGTH 4"

CUSTOMER PRINT
SHEET 1 OF 2

EBERHARD MANUFACTURING CO.
 DIVISION OF
 THE EASTERN COMPANY
 CLEVELAND, OHIO 44149-9712

THIS DOCUMENT IS IN ACCORDANCE WITH ASME Y14.5-2009			DATE	NAME
LINEAR MEASUREMENT: IN/CH/mm			12/7/2021	
UNLESS OTHERWISE SPECIFIED TOLERANCES ARE AS FOLLOWS:			DWN. BY	
			K. Brauns	
			SCALE	
			1	
			CHK. BY	
			MATERIAL	PART NUMBER
			SEE NOTES	E904V1B

C:\TEMP\6adac\tea4-1765-4c08-ab94-4ffbc31c1fc8\E904XE904XE904V1B sht1.dwg