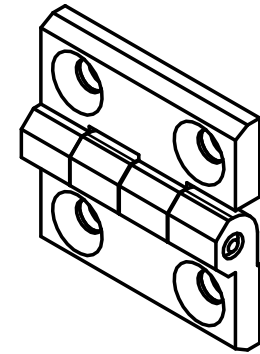
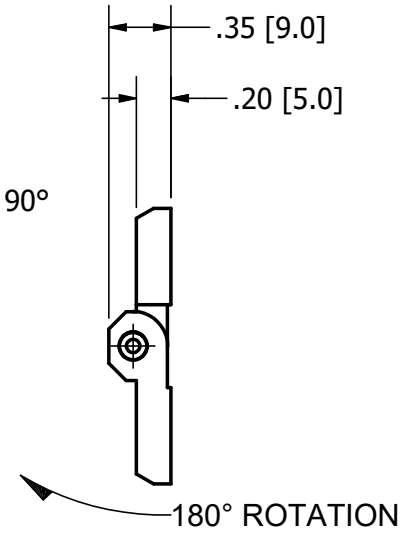
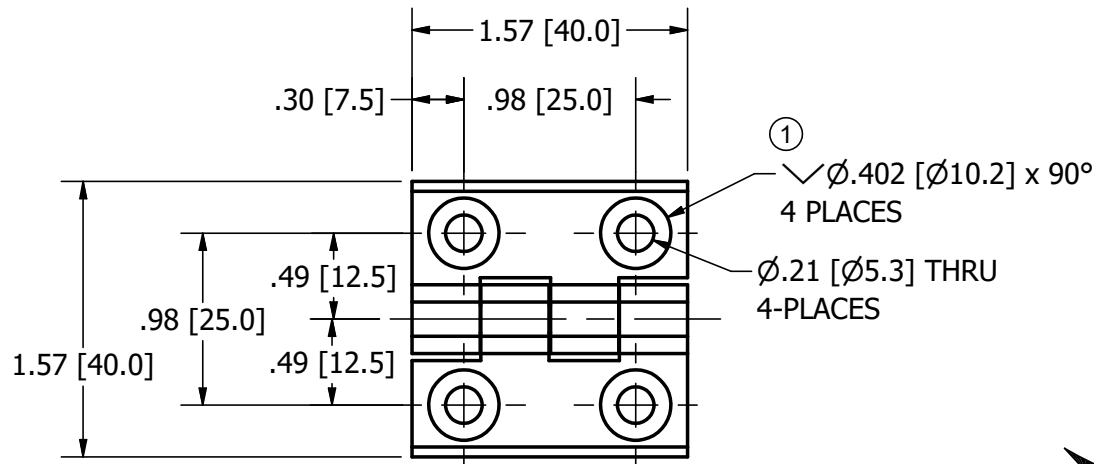


CONFIDENTIAL NOTICE: This drawing and the designs, specifications and engineering information disclosed hereon are the property of Eberhard Manufacturing Company and are not to be disseminated or reproduced without express written consent. The drawing is loaned in confidence and then only for consideration of the matter disclosed hereon. In accepting loan of this drawing, recipient agrees to keep it and the matter disclosed hereon in confidence and not to use nor permit their use in any way detrimental to Eberhard Manufacturing Company, Division of the Eastern Company, 21944 Drake Road, Cleveland, Ohio 44149-9712 © 2017 EBERHARD MFG. CO.



NOTE:
 1) MATERIAL: BODY ZINC DIE CAST. PIN 300 SERIES STAINLESS
 2) FINISH: BODY (30) BLACK POWDER COAT
 FINISH: PIN, (01) PLAIN

CUSTOMER PRINT
SHEET 1 OF 2

						SPECIAL TOLERANCES							
						LINEAR MEASURE: INCH[mm]		DATE 6/23/2017		EBERHARD MANUFACTURING CO.			
						UNLESS OTHERWISE SPECIFIED TOLERANCES ARE AS PER DIN- ISO 2768-M		DR. BY K Braun		NAME HINGE DIE CAST 40mm x 40mm			
								SCALE NTS		MATERIAL		PART NUMBER	
								CHK. BY MR		THIS DOCUMENT IS IN ACCORDANCE WITH ASME Y14.5-2009		SEE NOTE DC-54	
1	.40 DIA. WAS .45 DIA. .65 DIA. WAS .72 DIA. DIN TOLERANCING NOTE		5837	1-26-18	FLP	MR							
	RELEASE TO PRODUCTION/REF:PP12073		5808	6/23/2017	KAB	MR							
REV	DESCRIPTION		EN	DATE	REV. BY	APVD. BY							

C:\Working_Folder\Archive\Pro\5\54\DC-54 SH11.dwg