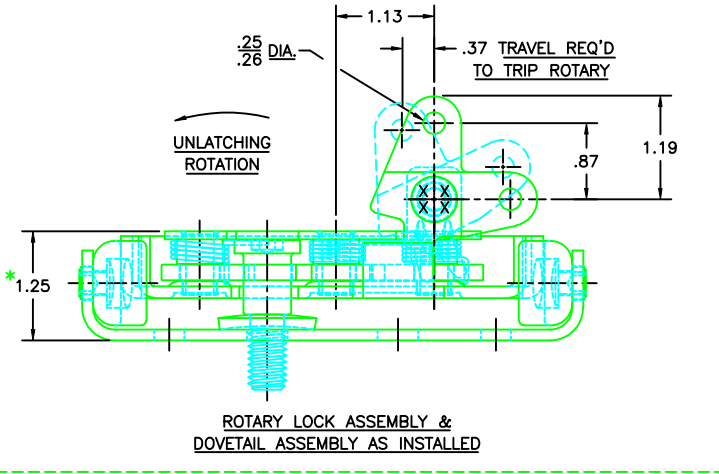


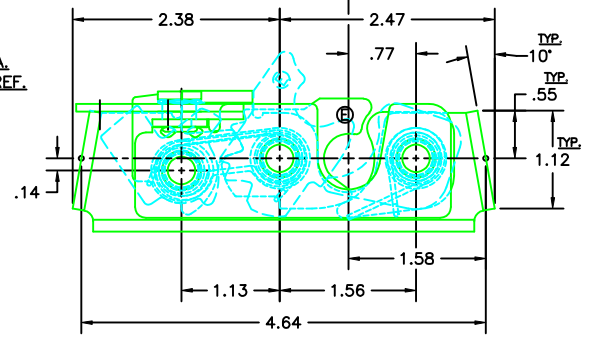
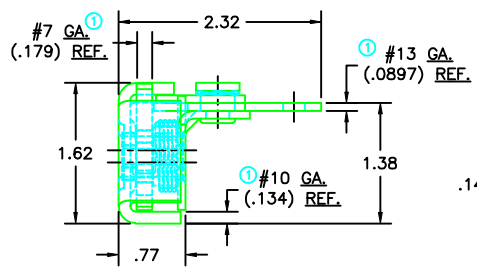
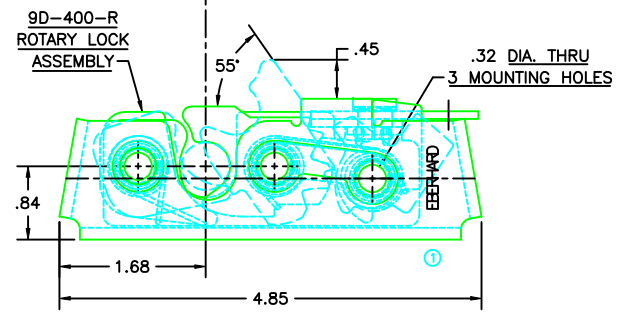
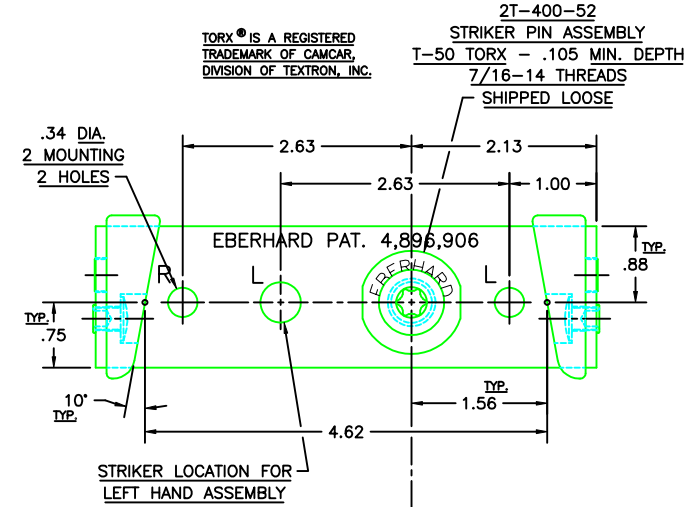
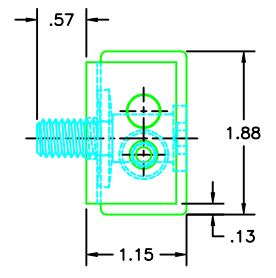
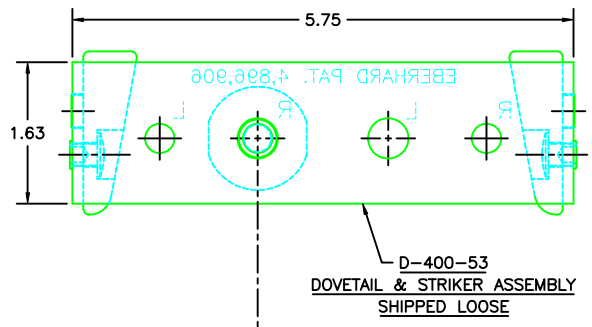
**CONFIDENTIAL NOTICE:** This drawing and the design, specifications and engineering information disclosed herein are the property of Eberhard Manufacturing Company and are not to be disseminated or reproduced without express written consent. By making a request for and then using this drawing, recipient agrees to keep it and the matter disclosed herein in confidence and not to use nor permit their use in any way whatsoever by Eberhard Manufacturing Company, Division of The Eastern Company, 23844 Cedar Road, Cleveland, Ohio 44148-9712 © 2002 EBERHARD MFG. CO.

NO.	CHANGE	ENG. NO.	DATE
	REVISED AND REDRAWN	EH 5005	7-28-01
1	REVISED DIMENSIONS & ADDED DIMENSIONAL LIMITS	EH 5001	1-28-02
2	ADDED FINISH FOR STRIKER	EH 5303	10-19-02



**NOTES:**

- 1) MOUNT ROTARY LOCK WITH THREE 5/16 DIA. GRADE 8 BOLTS TO MEET F.M.V.S.S. 206 SAFETY STANDARDS.  
RECOMMENDED TORQUE FOR TIGHTENING: 130 ±10 in./lbs.
- 2) MOUNT DOVETAIL ASSEMBLY WITH STRIKER PIN AND ONE 5/16 DIA. BOLT. MOUNTING HOLES MARKED "R" TO BE USED WITH RIGHT HAND ROTARY. MOUNTING HOLES MARKED "L" TO BE USED WITH LEFT HAND ROTARY.
- 3) RECOMMENDED TORQUE FOR TIGHTENING 2T-400-52 STRIKER PIN ASSEMBLY: 45/50 ft./lbs.
- 4) ROTARY LATCH TO BE MOUNTED TO VEHICLE DOOR.
- 5) DOVETAIL AND STRIKER PIN TO BE MOUNTED TO DOOR FRAME.
- \* 6) OVER ALL DIMENSION OF 1.25 TO BE HELD FOR CORRECT ENGAGEMENT.



FOR ADDITIONAL INFORMATION SEE:  
9D-400-R/L - DOVETAIL ROTARY LOCK ASSEMBLY.  
D-400-53 - DOVETAIL AND STRIKER LOCATOR ASSEMBLY.

PAT. No. 4,896,906  
DES. PAT. No. 304,291

EBERHARD MANUFACTURING CO.  
DIVISION OF  
THE EASTERN COMPANY  
CLEVELAND, OHIO 44148-9712

UNLESS OTHERWISE SPECIFIED TOLERANCES ARE AS FOLLOWS:  
ANGLES: ±.2°  
2 PLACE DEC.: 0.05  
3 PLACE DEC.: 0.015  
ALL HOLES: 0.005

DATE: 7-17-01  
DUEY: A.L.  
BOLZ: FULL  
GIBBY: ONLY

MINORAL: PART NUMBER: 9D-400-UR/L