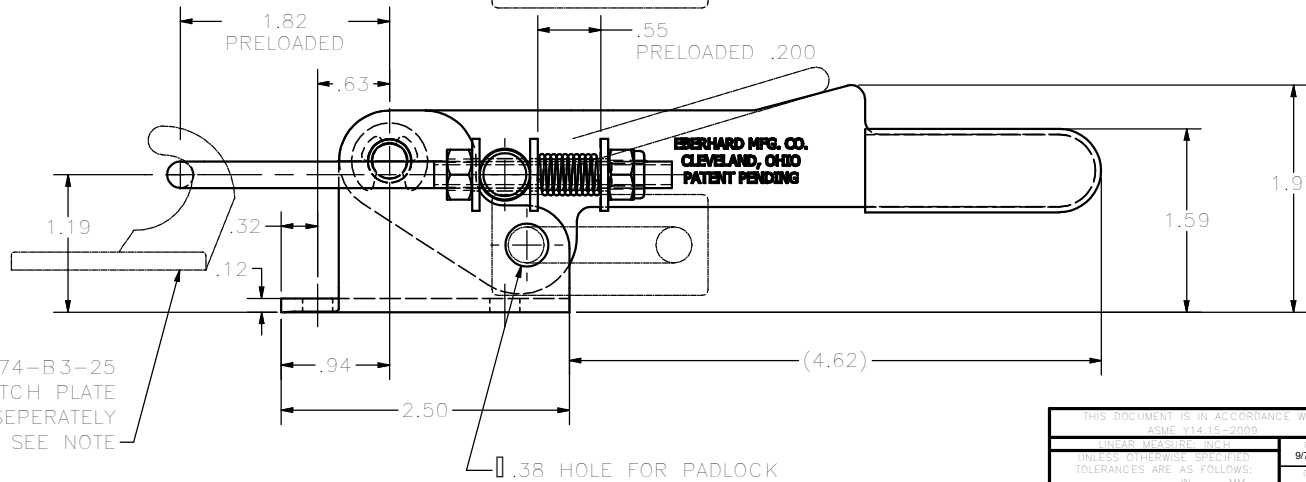
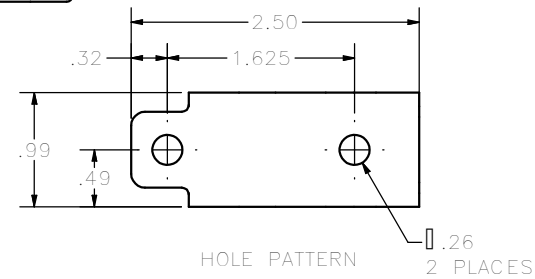
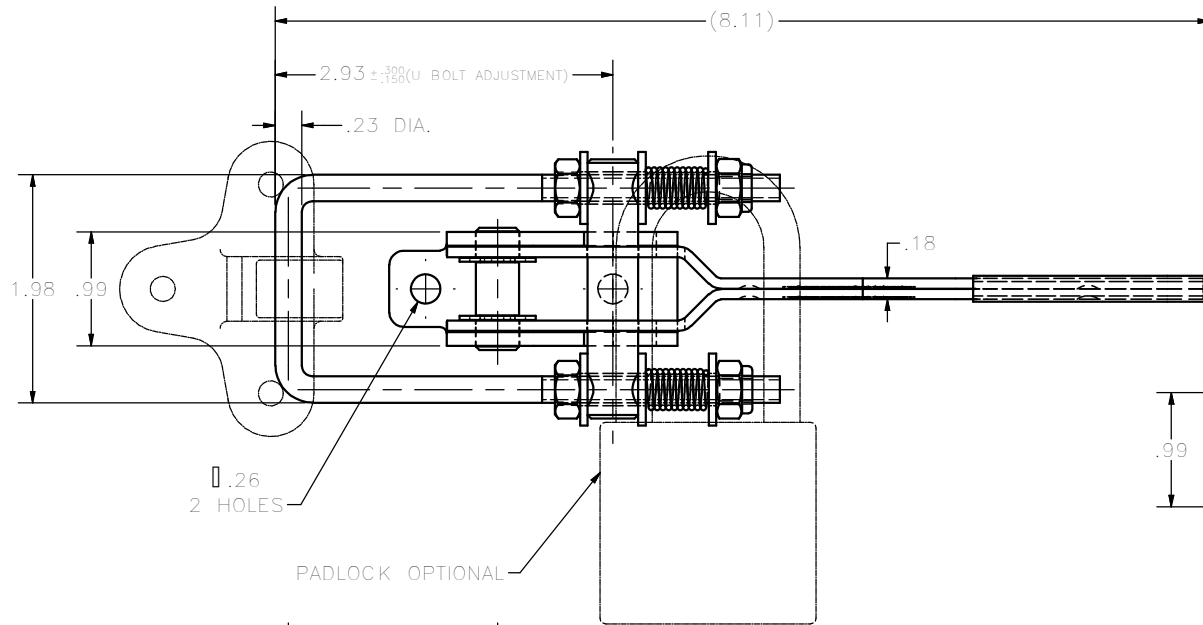


**CONFIDENTIAL NOTICE:** This drawing and the designs, specifications and engineering information disclosed hereon are the property of Eberhard Manufacturing Company and are not to be disseminated or reproduced without express written consent. The drawing is loaned in confidence and then only for consideration of the matter disclosed hereon. In accepting loan of this drawing, recipient agrees to keep it and the matter disclosed hereon in confidence and not to use nor permit their use in any way detrimental to Eberhard Manufacturing Company, Division of the Eastern Company, 21944 Drake Road, Cleveland, Ohio 44149-9712 © 2012 EBERHARD MFG. CO.

REVISION HISTORY			
REV	DESCRIPTION	EN	DATE
	REVISED, REDRAWN AND CONVERTED TO 3D	5570	9-7-12

NOTE:  
 MAXIMUM LOAD WHEN USED WITH:  
 P/N 166AH - 300#  
 P/N 7462 - 1000#  
 P/N 9674-B3 - 1500#



9674-B3-25  
 CATCH PLATE  
 SOLD SEPARATELY  
 SEE NOTE

**EBERHARD MFG. CO.  
 CLEVELAND, OHIO  
 PATENT PENDING**

CUSTOMER PRINT  
 SHEET 1 OF 2

THIS DOCUMENT IS IN ACCORDANCE WITH <small>ASME Y14.15-2009</small>		DATE <b>9/7/2012</b>	
UNLESS OTHERWISE SPECIFIED TOLERANCES ARE AS FOLLOWS:		DRAWN BY <b>FLP</b>	
ANGLES:	$0 \pm 0$ $0 \pm 0$	SCALE <b>FULL</b>	
2 PLACE DEC.:	$0 \pm .03$ $0 \pm .076$	MATERIAL	
3 PLACE DEC.:	$0 \pm .015$ $0 \pm .038$	PART NUMBER	
ALL HOLES:	$0 \pm .015$ $0 \pm .031$	----- <b>930</b>	

<b>EBERHARD MANUFACTURING CO.</b> <small>DIVISION OF      THE EASTERN COMPANY      CLEVELAND, OHIO 44149-9712</small>	
<b>DRAW LATCH</b>	
<b>930</b>	

SUPERSEDES DRAWING 930 SHEET 1 OF 2 DATED 5-8-96.