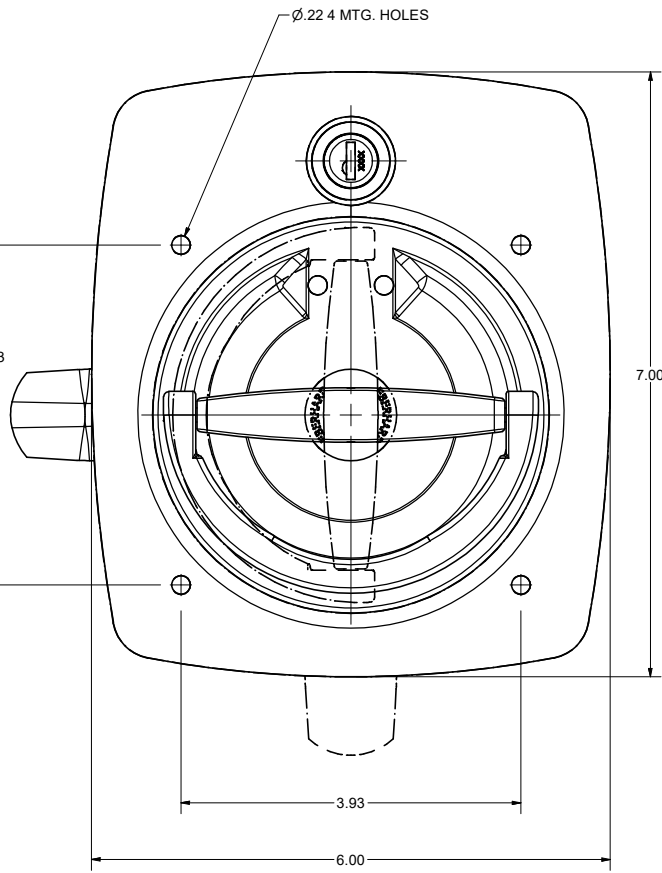
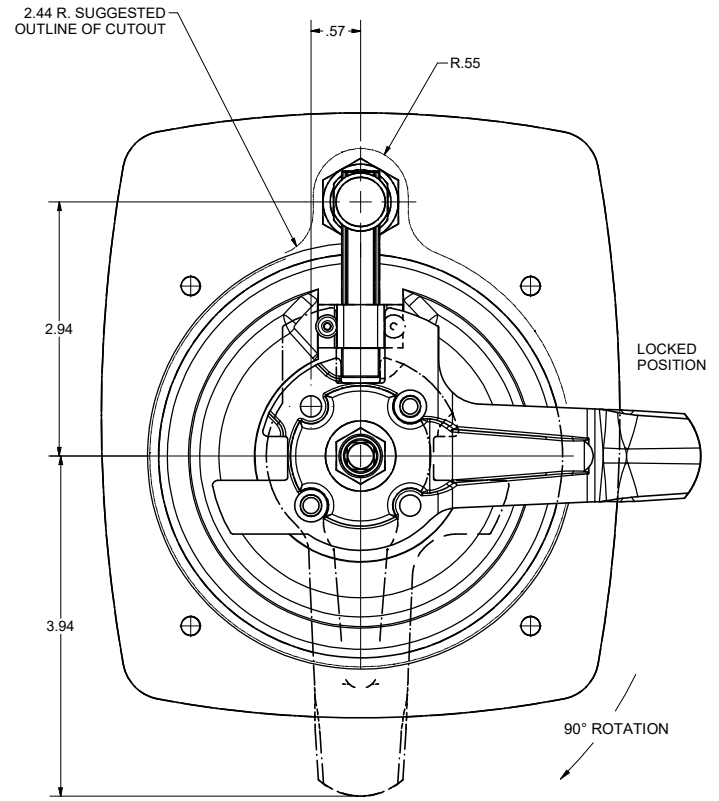
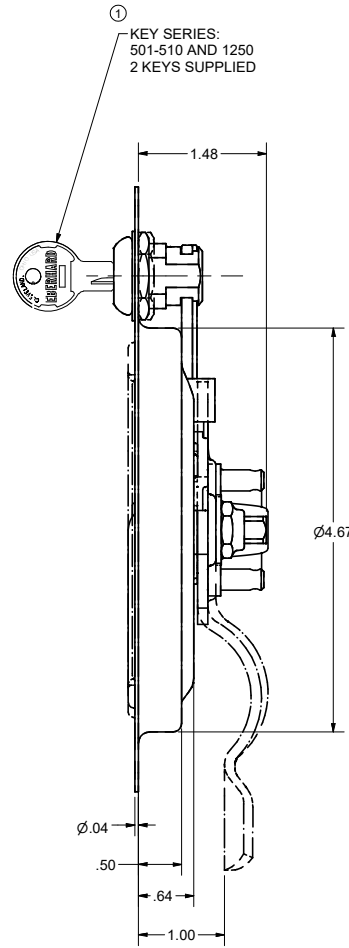
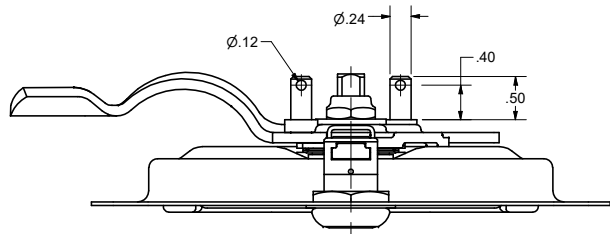


CONFIDENTIAL NOTICE: This drawing and the designs, specifications and engineering information disclosed hereon are the property of Eberhard Manufacturing Company and are not to be disseminated or reproduced without express written consent. The drawing is loaned in confidence and then only for consideration of the matter disclosed hereon. In accepting loan of this drawing, recipient agrees to keep it and the matter disclosed hereon in confidence and not to use nor permit their use in any way detrimental to Eberhard Manufacturing Company, Division of The Eastern Company, 2184 Drake Road, Cleveland, Ohio 44149-0712, © 2013 EBERHARD MFG. CO.

REVISION HISTORY			
REV	DESCRIPTION	EN	DATE
	CONVERTED TO 3D	5614	7-26-12
1	KEY NUMBER 751 REMOVED AND ADDED 501-510	5869	9/7/2018



CUSTOMER PRINT
SHEET 1 OF 2
RIGHT HAND SHOWN
LEFT HAND OPPOSITE

PART NO.	FINISH	DESCRIPTION
9030-SS (32)	(32) STAINLESS STEEL W/ BLACK HANDLE	KEY-LOCKING W/4 MTG. HOLES

EBERHARD MANUFACTURING CO. DIVISION OF THE EASTERN COMPANY CLEVELAND, OHIO 44149-3712	
DATE: 7/26/2013 DRAWN: FLP CHECKED: FULL APPROVED:	TITLE: THREE POINT RECESSED "D" HANDLE ASSEMBLY - KEY LOCKING PART NO.: 9030-SSR/L

SUPERSEDES DRAWING 9030-SSR/L SHEET 1 OF 2 DATED 9-16-04.

C:\Working_Folder\Archive\Proj\9030_31\9030-SSR.L SH1.dwg