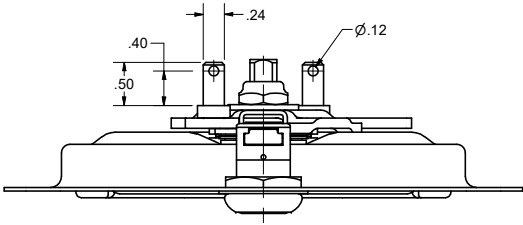


CONFIDENTIAL NOTICE: This drawing and the designs, specifications and engineering information disclosed hereon are the property of Eberhard Manufacturing Company and are not to be disseminated or reproduced without express written consent. The drawing is loaned in confidence and then only for consideration of the matter disclosed hereon. In accepting loan of this drawing, recipient agrees to keep it and the matter disclosed hereon in confidence and not to use nor permit their use in any way detrimental to Eberhard Manufacturing Company, Division of The Eastern Company, 21844 Drake Road, Cleveland, Ohio 44149-9712, © 2013 EBH/MSD/MFC, CO.

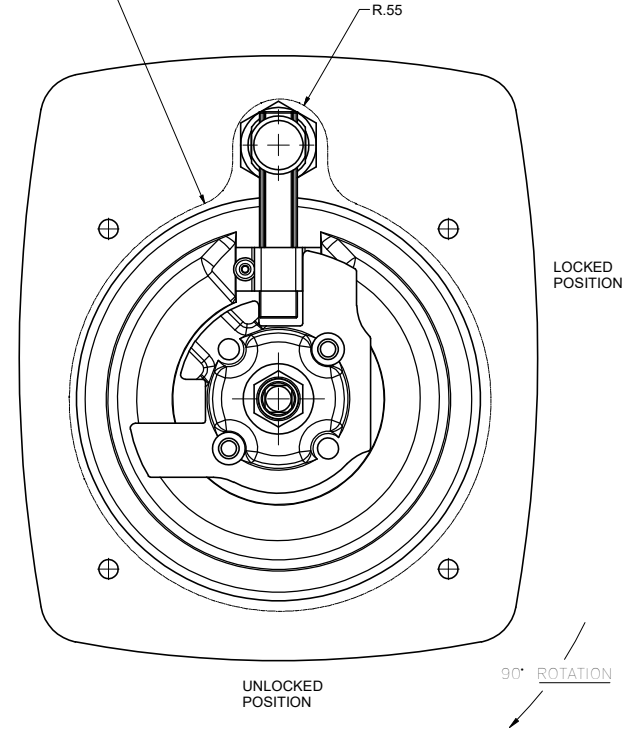
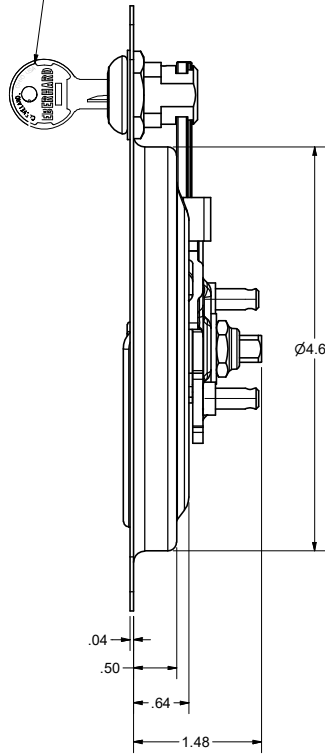
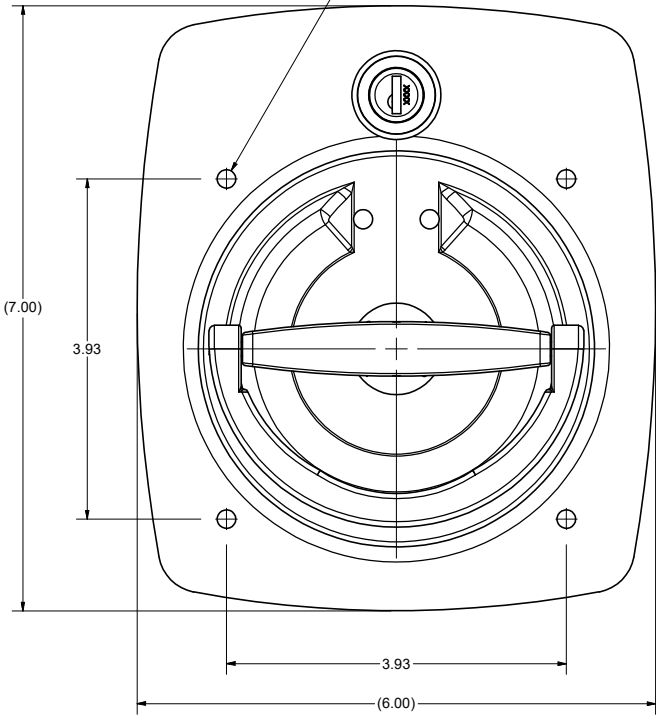
REVISION HISTORY			
REV	DESCRIPTION	EN	DATE
	CONVERTED TO 3D	5614	7-26-13
1	KEY NUMBER 751 REMOVED AND ADDED 501-510	5869	9/7/2018



①
KEY SERIES:
501-510 AND 1250
2 KEYS SUPPLIED

2.44 R. SUGGESTED
OUTLINE OF CUTOUT

Ø.22
4 PLACES



PART NO.	FINISH	DESCRIPTION
9020-SSR/L (32)	(32) STAINLESS STEEL W/ BLACK ANODIZE	KEY-LOCKING W/4 MTG. HOLES

CUSTOMER PRINT
SHEET 1 OF 2
RIGHT HAND SHOWN
LEFT HAND OPPOSITE

EBERHARD MANUFACTURING CO.
DIVISION OF
THE EASTERN COMPANY
CLEVELAND, OHIO 44149-9712

UNLESS OTHERWISE SPECIFIED	7/26/2013
UNLESS OTHERWISE SPECIFIED	UNLESS OTHERWISE SPECIFIED
2 PLACE DEC: .01	2 PLACE DEC: .01
3 PLACE DEC: .001	3 PLACE DEC: .001
4 PLACE DEC: .0001	4 PLACE DEC: .0001

TWO POINT RECESSED "D"
HANDLE ASSEMBLY - KEY
LOCKING

9020-SSR/L

SUPERSEDES DRAWING 9020-SS RL SHEET 1 OF 2 DATED 4-9-01.