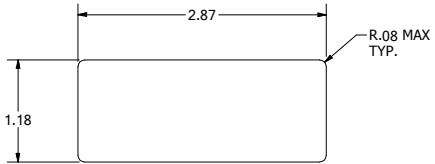


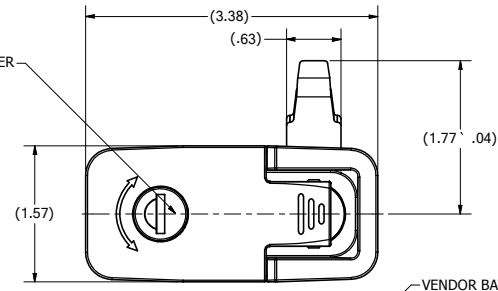
CONFIDENTIAL NOTICE: This drawing and the designs, specifications and engineering information disclosed hereon are the property of Eberhard Manufacturing Company and are not to be disseminated or reproduced without express written consent. The drawing is loaned in confidence and then only for consideration of the matter disclosed hereon. In accepting loan of this drawing, recipient agrees to keep it and the matter disclosed hereon in confidence and not to use nor permit their use in any way (except as may be necessary) to Eberhard Manufacturing Company, Division of the Eastern Company, 21844 Drake Road, Cleveland, Ohio 44148-9712. © 2014 EBERHARD MFG. CO.

REVISION HISTORY					
REV	DESCRIPTION	EN	DATE	APVD BY	REV BY
	RELEASE PER PP10724	5666	08/08/2014	MR	GJB

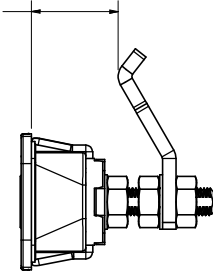


SUGGESTED CUTOUT

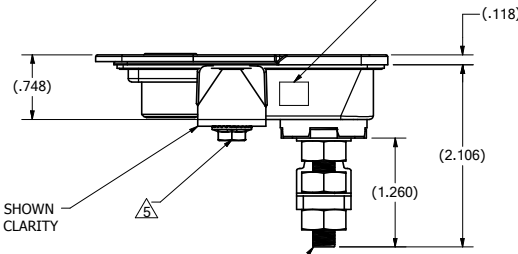
STAINLESS STEEL COVER W/ DUST SHUTTER



(.75 TO 1.10 ADJUSTMENT)

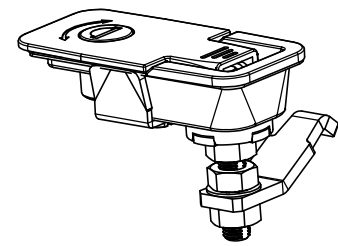


VENDOR BATCH CONTROL LABEL WITH

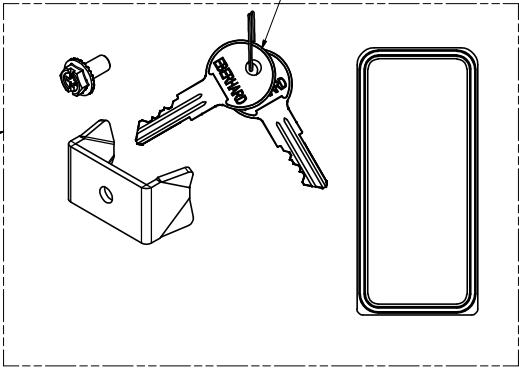


BRACKET AND BOLT SHOWN ASSEMBLED FOR CLARITY

M8 X 1.25 THREAD



KEY NUMBER STAMPED ON OPPOSITE SIDE OF KEYS



- NOTES:
- 1.) FINISH: (42) BLACK POWDER (TEXTURED)
 - 2.) AVAILABLE KEY NO'S 751 TO BE ORDERED AS PART OF THE PART NUMBER SEE IN EXAMPLE BELOW:

(816-751K-42)
 - 3.) GASKET, BOLT, MOUNTING BRACKET, AND 2 KEYS SHIPPED LOOSE IN A SECURED POLY BAG, PLACED IN A LARGER BAG WITH TRIGGER LATCH.
 - 4.) THIS PRODUCT IS TO BE ROHS COMPLIANT.
- RECOMMENDED TIGHTENING TORQUE: 10-15 IN-LBS.

CUSTOMER PRINT SHEET 1 OF 2

EBERHARD MANUFACTURING CO. DIVISION OF THE EASTERN COMPANY CLEVELAND, OHIO 44148-9712			
THIS DOCUMENT IS IN ACCORDANCE WITH ASME Y14.15-2009 LINEAR MEASURE: INCH UNLESS OTHERWISE SPECIFIED TOLERANCES ARE AS FOLLOWS: 2 PLACE DEC.: .03 .16 3 PLACE DEC.: .015 .38 ALL HOLES: .005 .13		DATE: 08/2014 DR BY: G. BISHOP SCALE: FULL CHK BY: MR	NAME: KEY LOCKING LIFT AND TURN LATCH MATERIAL: PART NUMBER: 816-K CHART: