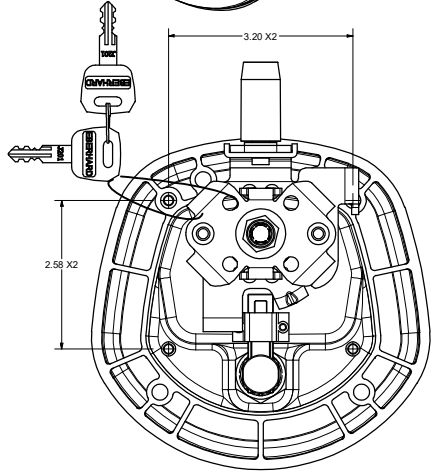
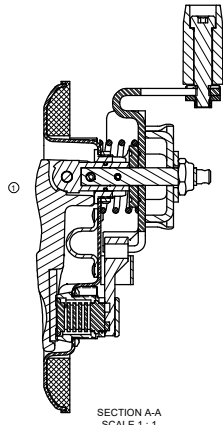
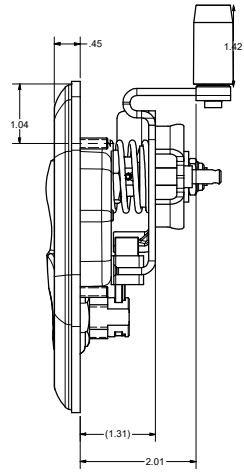
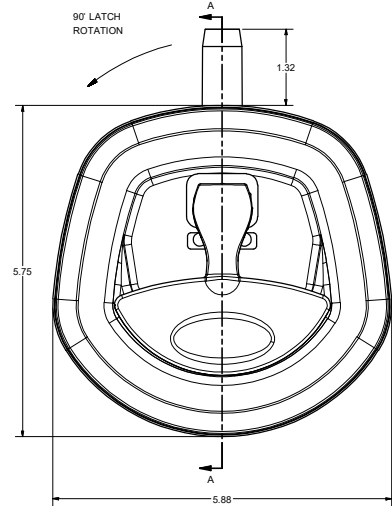
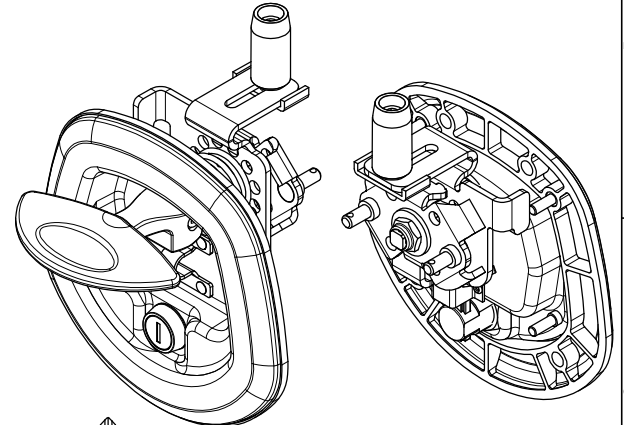
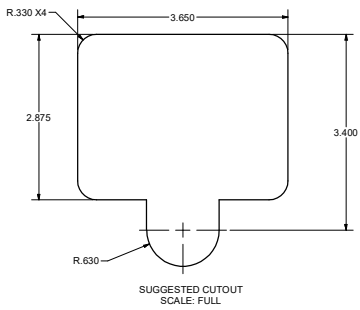
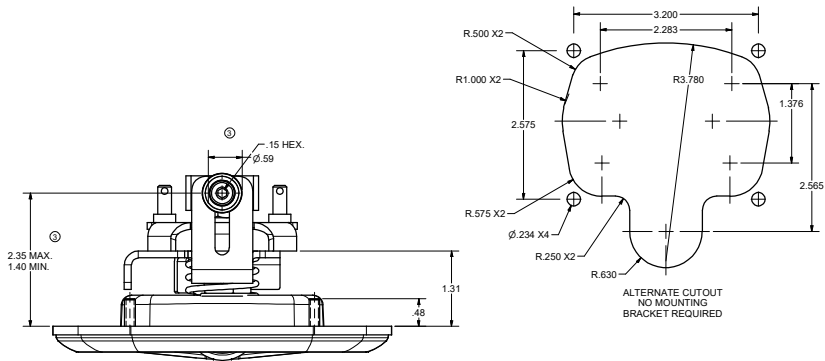


CONFIDENTIAL NOTICE: This drawing and the design, specifications and approvals are the property of Eberhard Manufacturing Company and are not to be disseminated or reproduced without express written consent. The drawing is intended to be used for the manufacture of the product described herein. It is not intended to be used for any other purpose. Eberhard Manufacturing Company reserves the right to change the design, specifications and approvals without notice and without liability.

REVISION HISTORY					
REV	DESCRIPTION	EN	DATE	REV. BY	APVD. BY
1	RELEASED WAS M1222	5657	6/8/2014	VRB	MR
1	UPDATED GEOMETRY AND DESIGN TO SHOW THE ALIGNMENT FEATURE	5681	11/21/2014	GLUG/AS	S.S./V
2	PATENTED WAS PATENT PENDING	5684	12-16-14	FLP	MR
3	ADDED 7.35 MAX. 90 MIN. ADJUSTMENT (35) ØR DIA. 15 HEX	5685	1-6-15	FLP	MR
4	ADD KEYS COLUMN & ROD HARDWARE PACK COLUMN. ADD J223. UPDATE P/N	5818	9/1/2017	VRB	MR
5	WAS 7P-28430-NKRL. ADDED P/N 7P-28430-NK-RL TO CHART	5923	10-4-19	KLS	MR



- NOTES:
- FINISHES:
    - A. BRIGHT POLISHED RECEPTACLE AND CHROME HANDLE: FC(03)
    - B. BLACK POWDER (TEXTURED) RECEPTACLE AND HANDLE, FC (42)
    - C. BLACK POWDER (TEXTURED) RECEPTACLE AND CHROME HANDLE: FC (35)
  - 35 IN-LBS MAX. TORQUE ON MOUNTING STUDS
  - 35 IN-LBS MAX. TORQUE FOR 34-5655-14 LOCK NUT
  - KEY CYLINDER WITH 10 KEY CHANGES, J201 THRU J210, AND J223
- SUPPLIED WITH TWO DOUBLE BITTED KEYS  
EXAMPLE ORDER AS: 7P-28430-RL-XXX-XX

FINISH CODE  
SEE NOTE #1  
KEY NUMBER

CUSTOMER PRINT  
SHEET 1 OF 2  
LEFT HAND SHOWN  
RIGHT HAND OPPOSITE

ASSEMBLY P/N	PANEL THICKNESS	MOUNTING BRACKET KIT P/N	KEYS	ROD HARDWARE PACK	CUTOUT TYPE	PATENTED
7P-28430-RL	.047	NONE	SEE NOTE 4	-	ALTERNATE	THIS DOCUMENT IS IN CONFORMANCE WITH ISO 9001:2008
7P-28430-NKPK-RL	.047	NONE	NO KEYS	9020-P5	ALTERNATE	TO ORDER, SPECIFIC PROFILES
7P-28430A-URL	.047	NONE	NO KEYS	-	ALTERNATE	TO ORDER, SPECIFIC PROFILES
7P-28430A-URL	.047	28400A-60U	SEE NOTE 4	-	STANDARD	TO ORDER, SPECIFIC PROFILES
7P-28430B-URL	.079	28400B-60U	SEE NOTE 4	-	STANDARD	TO ORDER, SPECIFIC PROFILES
7P-28430C-URL	.135	28400C-60U	SEE NOTE 4	-	STANDARD	TO ORDER, SPECIFIC PROFILES

**EBERHARD MANUFACTURING CO.**  
DIVISION OF  
THE EASTERN COMPANY  
CLEVELAND, OHIO 44116-9712

KEY LOCKING COMPRESSION LATCH -  
THREE POINT - LONG ROLLER WITH  
HASP

7P-28430-RL

C:\Working\_Folder\ehw\p2\28430P-28430-RL.CH311.dwg