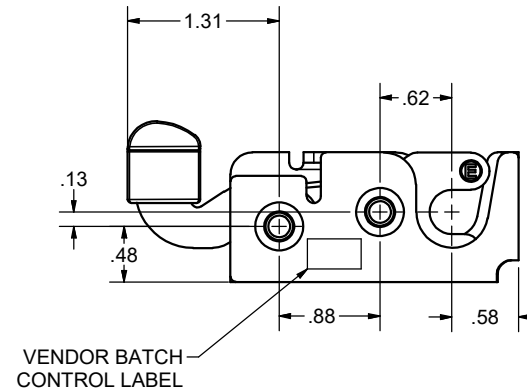
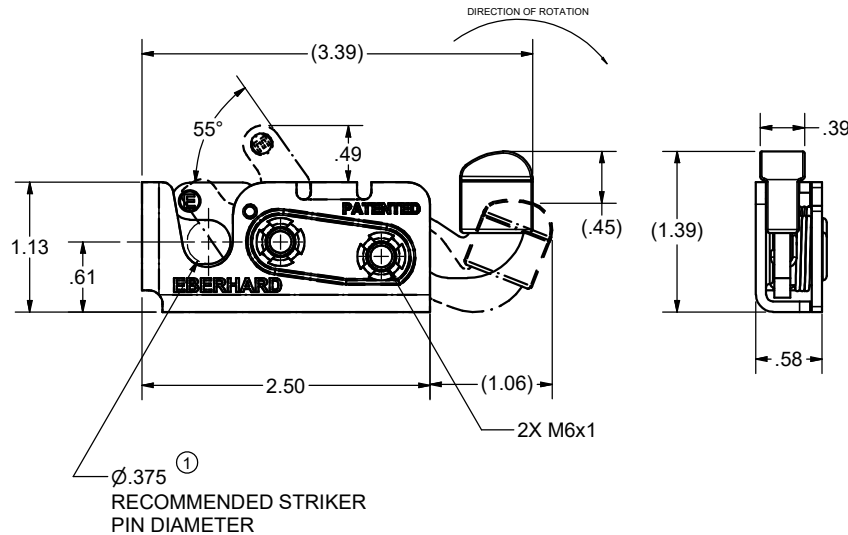
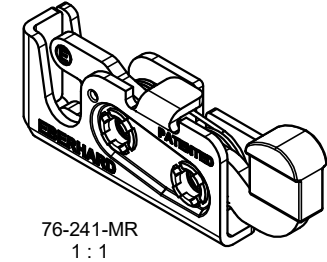
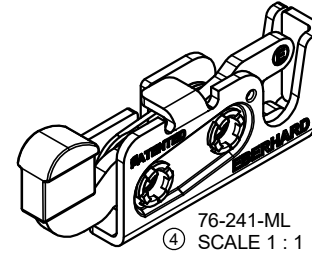


**CONFIDENTIAL NOTICE:** This drawing and the designs, specifications and engineering information disclosed hereon are the property of Eberhard Manufacturing Company and are not to be disseminated or reproduced without express written consent. The drawing is loaned in confidence and then only for consideration of the matter disclosed hereon. In accepting loan of this drawing, recipient agrees to keep it and the matter disclosed hereon in confidence and not to use nor permit their use in any way detrimental to Eberhard Manufacturing Company, Division of the Eastern Company. 21944 Drake Road, Cleveland, Ohio 44148-9712 © 2010 EBERHARD MFG. CO.

REVISION HISTORY					
REV	DESCRIPTION	EN	DATE	REV BY	APVD BY
	RELEASE, WAS 9-M8005-1R	5454	5/21/2010		
1	REMOVE VIEW, DIA .38 TO .375	5464	07/30/2010		
2	REMOVED LEFT HAND OPPOSITE NOTE AND REMOVED L FROM PIN	5542	2/24/2012		
3	ADDED LEFT HAND OPPOSITE NOTE AND ADDED L TO PART NUMBER	5631	11/22/2013		
4	ADD LEFT HAND VIEW	5809	6/30/2017	VRB	MR
5	ADDED: NOTE	5826	10/27/17	FLP	MR



**WARNING**  
THIS PRODUCT MUST NOT BE USED FOR PERSONAL RESTRAINT APPLICATIONS

MINI ROTARY IS A TRADEMARK OF EBERHARD MFG. CO., DIVISION OF THE EASTERN COMPANY.

CUSTOMER PRINT SHEET 1 OF 2

RIGHT HAND SHOWN  
LEFT HAND OPPOSITE

EBERHARD MANUFACTURING CO.  
DIVISION OF THE EASTERN COMPANY  
CLEVELAND, OHIO 44148-9712

UNLESS OTHERWISE SPECIFIED TOLERANCES ARE AS FOLLOWS:	DATE 5/25/2010
ANGLES: ± 2'	DR BY RBernot
2 PLACE DEC.: ± .03	SCALE FULL
3 PLACE DEC.: ± .015	CHK BY
ALL HOLES: ± .005	

NAME	SINGLE STAGE MINI-ROTARY LOCK ASSEMBLY WITH M6 MOUNTING THREADS
MATERIAL	
PART NUMBER	76-241-MR/L

- NOTES:
- 1) USE M6X1 CLASS 8.8 BOLTS FOR INSTALLATION. RECOMMENDED INSTALLATION TORQUE: 14 FT-LB.
  - 2) MAX LOAD RATING - 750 LBS
  - ⑤ 3) FOR ONE ASSEMBLY IN POLY BAG ORDER: 76-241-MR/LPK-BG.

FINISH: (64) ZINC & YELLOW CONVERTER WITH EVERLUBE INTERNAL COMPONENTS  
(BG) BEARING GREASE WITH EVERLUBE INTERNAL COMPONENTS