

CONFIDENTIAL NOTICE: This drawing and the designs, specifications and engineering information disclosed hereon are the property of Eberhard Manufacturing Company and are not to be disseminated or reproduced without express written consent. The drawing is loaned in confidence and then only for consideration of the matter disclosed hereon. In accepting loan of this drawing, recipient agrees to keep it and the matter disclosed hereon in confidence and not to use nor permit their use in any way detrimental to Eberhard Manufacturing Company, Division of the Eastern Company, 21944 Drake Road, Cleveland, Ohio 44149-9712 © 2012 EBERHARD MFG. CO.

REVISION HISTORY			
REV	DESCRIPTION	EN	DATE
	REVISED, REDRAWN AND CONVERTED TO 3D	5571	9-14-12

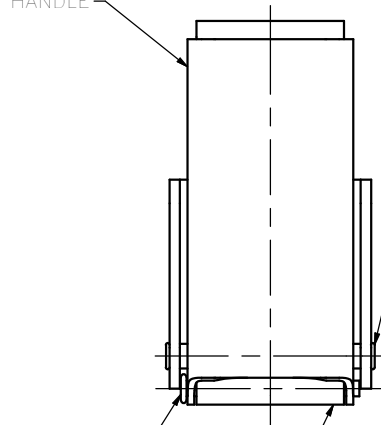
750-2
HANDLE

#42 (n .09) 2 HOLES
PROVISION FOR LOCKWIRE

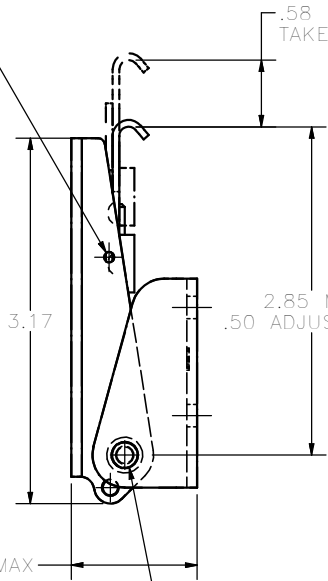
.58
TAKE UP

750-50
HOOK S/A

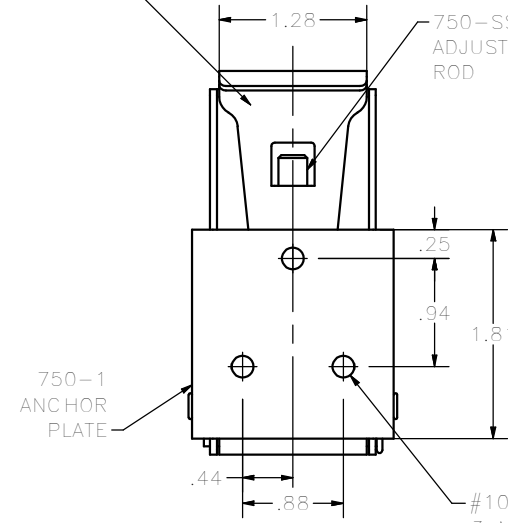
750-SS7
ADJUSTING
ROD



ORBITAL RIVET
2 PLACES AS SHOWN
HANDLE MUST TURN
FREELY AFTER
RIVETING



2.85 MIN
.50
ADJUSTMENT



750-1
ANCHOR
PLATE

#10 (n .193)
3 MOUNTING
HOLES

1-750-SS3
PIN

750-8
HINGE

750-SS4
RIVET
2 REQ'D

SUPERSEDES DRAWING 750 DATED 4-26-93.

THIS DOCUMENT IS IN ACCORDANCE WITH	
LINEAR MEASUREMENTS:	ASME Y14.15-2009
UNLESS OTHERWISE SPECIFIED TOLERANCES ARE AS FOLLOWS:	
INCHES:	MM
ANGLES:	° 2' ± 2'
2 PLACE DEC.:	± .03 ± .076
3 PLACE DEC.:	± .015 ± .038
ALL HOLES:	± .015 ± .031

EBERHARD MANUFACTURING CO.
DIVISION OF
THE EASTERN COMPANY
CLEVELAND, OHIO 44149-9712

NAME
ADJUSTABLE DRAW LATCH ASSEMBLY

MATERIAL

PART NUMBER
750

C:\Working_Folder\Archive\Pro7\750\750.dwg