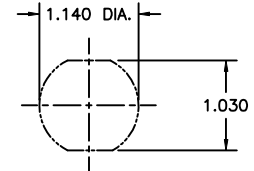
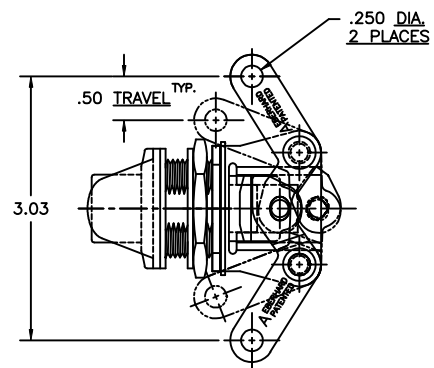
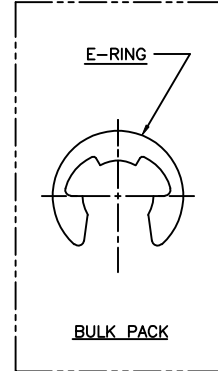
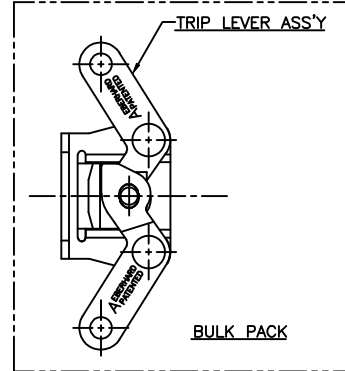
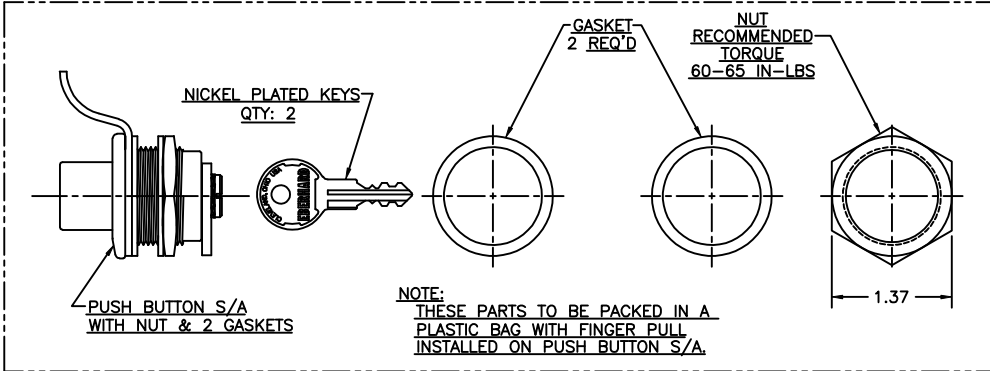
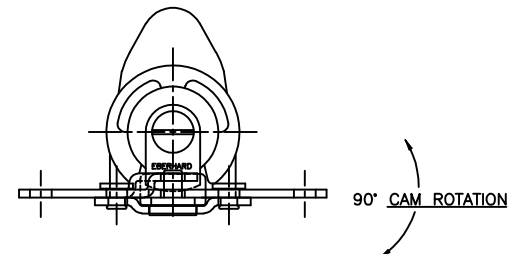
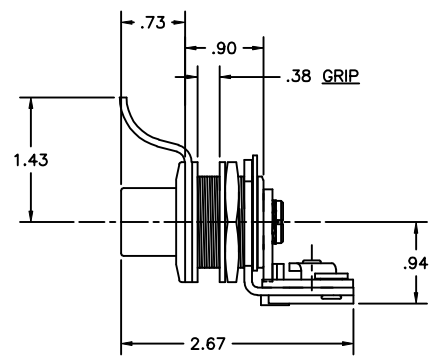
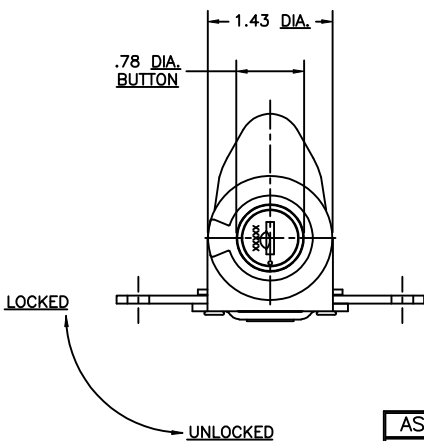


**CONFIDENTIAL NOTICE:** This drawing and the designs, specifications and engineering information disclosed herein are the property of Eberhard Manufacturing Company and are not to be disseminated or reproduced without express written consent. This drawing is issued in confidence and then only for consideration of the reader disclosed herein. In accepting hereof the reader agrees to keep it and the matter disclosed herein in confidence and not to use nor permit third use in any way additional to Eberhard Manufacturing Company, Division of the Eastern Company, 21944 Dreda Road, Cleveland, Ohio 44149-9712 © 2009 EBERHARD MFG. CO.

NO.	CHANGE	ENGR.	DATE
	RELEASED, REV. 1-10018	EN 5421	8-25-08



SUGGESTED CUTOUT



CUSTOMER PRINT SHEET 1 OF 2

NOTE:  
FIFTY DIFFERENT KEY COMBINATIONS REQUIRED  
NUMBERED H700D THRU H749D  
EXAMPLE:  
ORDER P/N  
7-682-700P(31) - FOR "H" SERIES

ASSEMBLY #	FINISH	PUSH BUTTON	FINGER PULL	FLANGE COVER
7-682-PK-31	BLACK POWDER- BRIGHT CHROME	(04) CHROME	(30) BLACK POWDER	(30) BLACK POWDER
7-682-PK-30	BLACK POWDER	(30) BLACK POWDER	(30) BLACK POWDER	(30) BLACK POWDER
7-682-PK-04	BRIGHT CHROME	(04) CHROME	(04) CHROME	(10) BRIGHT POLISH
*	*	*	*	*

UNLESS OTHERWISE SPECIFIED TOLERANCES ARE AS FOLLOWS:		DATE
ANGLES:	±F	9-18-08
2 PLACE DEC.:	±.05	
3 PLACE DEC.:	±.015	
ALL HOLES:	±.005	

<b>EBERHARD MANUFACTURING CO.</b> DIVISION OF THE EASTERN COMPANY CLEVELAND, OHIO 44149-9712	
NAME EXTENDED PUSH BUTTON LOCK W/ SMALL ROUND FLANGE	PART NUMBER 7-682-PK