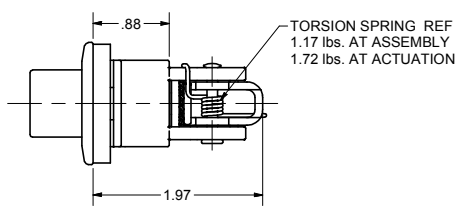
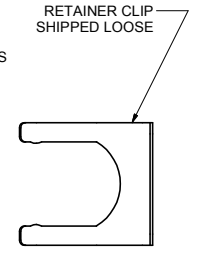
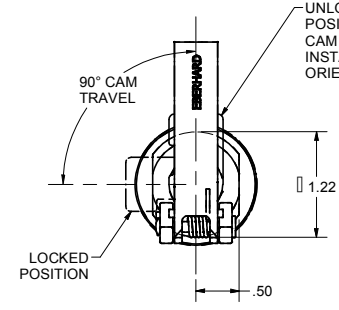
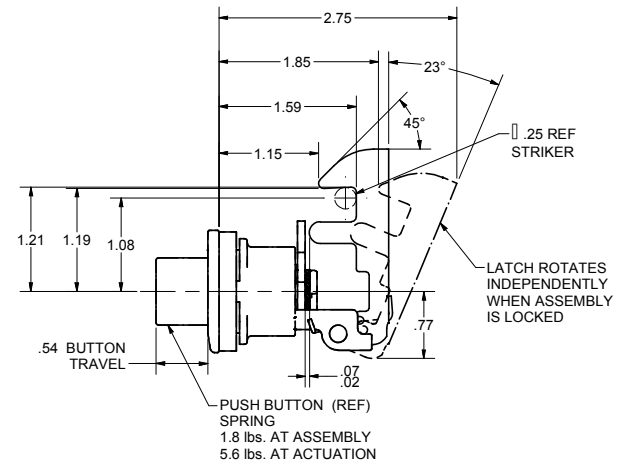
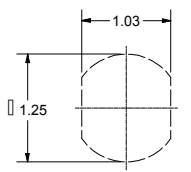
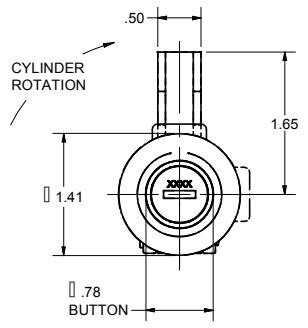
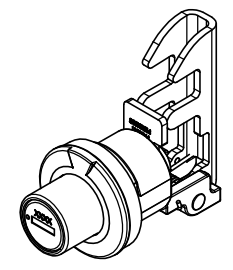
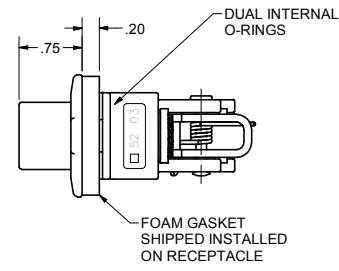
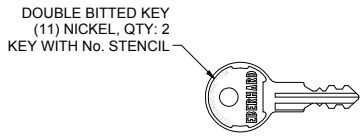


CONFIDENTIAL NOTICE: This drawing and the designs, specifications and engineering information disclosed hereon are the property of Eberhard Manufacturing Company and are not to be disseminated or reproduced without express written consent. The drawing is loaned in confidence and then only for consideration of the matter disclosed hereon. In accepting loan of this drawing, recipient agrees to keep it and the matter disclosed hereon in confidence and not to use nor permit their use in any way whatsoever by Eberhard Manufacturing Company, Division of the Eastern Company, 21844 Drake Road, Cleveland, Ohio 44148-9712. © 2015 EBERHARD MFG. CO.

REVISION HISTORY					
REV	DESCRIPTION	EN	DATE	REV BY	APVD BY
1	CONVERTED TO 3D	5713	7-24-15	FLP	MR



- NOTES:
1. AVAILABLE FINISHES:
A. BLACK POWDER COAT RECEPTACLE WITH CHROME PUSH BUTTON, FC (31)
B. BLACK POWDER COAT RECEPTACLE AND PUSH BUTTON, FC (30)
2. AVAILABLE KEY NUMBERS:
A. H700D - H 749D
B. J201 - J225
EXAMPLE: ORDER PART NUMBER: 685-700P-31 (FOR "H" SERIES)

CUSTOMER PRINT SHEET 1 OF 2

EBERHARD MANUFACTURING CO.	
DIVISION OF THE EASTERN COMPANY CLEVELAND, OHIO 44148-9712	
THIS DOCUMENT IS IN ACCORDANCE WITH ASME Y14.19-2009	DATE: 7/24/2015
UNLESS OTHERWISE SPECIFIED TOLERANCES ARE AS FOLLOWS:	DR BY: FLP
INches: .0010 .0020 .0050	SCALE: FULL
MM: .025 .050 .125	MATERIAL:
ANGLES: 2 PLACE DEC: .015 3 PLACE DEC: .005	CHK BY:
NAME: SMALL KEY LOCKING PUSH BUTTON LOCK WITH ROUND FLANGE, SPRING LOADED PAWL, GASKET AND RETAINER CLIP	
PART NUMBER: 685-PK	

SUPSEDES DRAWING 685-PK SHEET 1 OF 2 DATED 4-11-03.

C:\Working_Folder\Archive\Proj\685\685-PK SH1.dwg