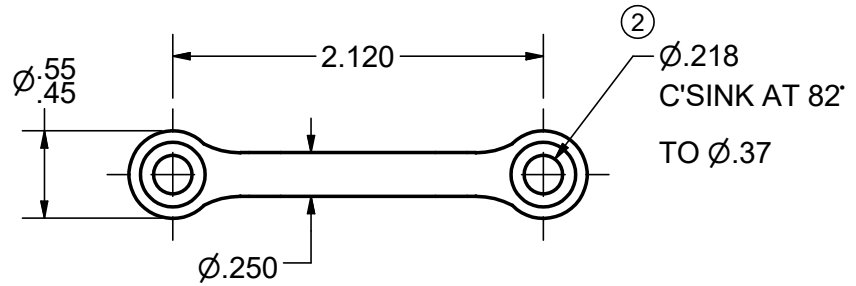


CONFIDENTIAL NOTICE: This drawing and the designs, specifications and engineering information disclosed herein are the property of Eberhard Manufacturing Company and are not to be disseminated or reproduced without express written consent. The drawing is loaned in confidence and then only for consideration of the matter disclosed herein. In accepting loan of this drawing, recipient agrees to keep it and the matter disclosed herein in confidence and not to use nor permit their use in any way detrimental to Eberhard Manufacturing Company, Division of the Eastern Company, 21944 Drake Road, Cleveland, Ohio 44149-9712 © 2015 EBERHARD MFG. CO.

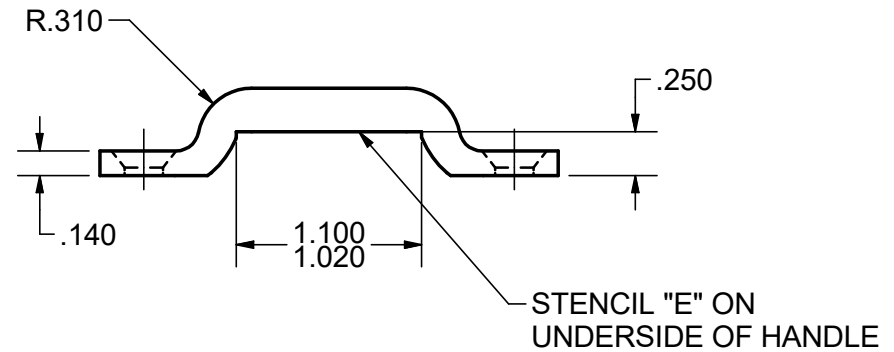


NOTES:

1. FINISHES:

- A. PLAIN, FC (01)
- B. NICKEL, FC (11)
- C. ELECTROPLATED ZINC, FC (25)
- D. ZINC W/YELLOW CHROMATE, FC (65)
- E. ZINC W/BLACK CHROMATE, FC (73)

①



SUPERSEDES DRAWING 6411-B CHART SH2 DATED 12-4-08.

				LINEAR MEASURE: INCH		DATE 12/7/2012		NAME EBERHARD MANUFACTURING CO.		NAME FOOTMAN LOOP FOR 1" STRAP	
				UNLESS OTHERWISE SPECIFIED TOLERANCES ARE AS FOLLOWS:		DR. BY FLP		DIVISION OF THE EASTERN COMPANY		MATERIAL .25 DIA. STEEL	
				ANGLES: ± 2' ± 2'		SCALE FULL		CLEVELAND, OHIO 44149-9712		PART NUMBER 6411-B	
				2 PLACE DEC.: ± .03 ± .76		CHK. BY		THIS DOCUMENT IS IN ACCORDANCE WITH ASME Y14.15-2009		CHART 1006/1015	
				3 PLACE DEC.: ± .015 ± .38							
				ALL HOLES: ± .005 ± .13							
2	.218 WAS .210	5688	1-30-15								
1	REMOVED NOTES	5677	10-24-14								
	REVISED, REDRAWN AND CONVERTED TO 3D	5582	12-7-12								
REV	DESCRIPTION	EN	DATE								

C:\TEMP\68c275aa-286d-43fd-9e3d-69a1a3b12ed0\FASTER\Footer\FooterMAN LOOPS\6411-B CHART.idw