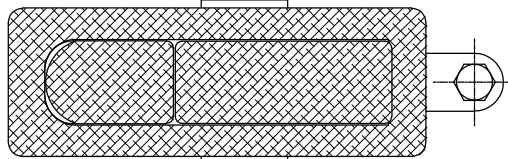


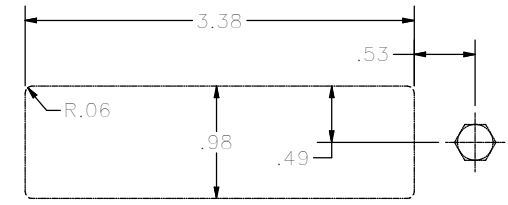
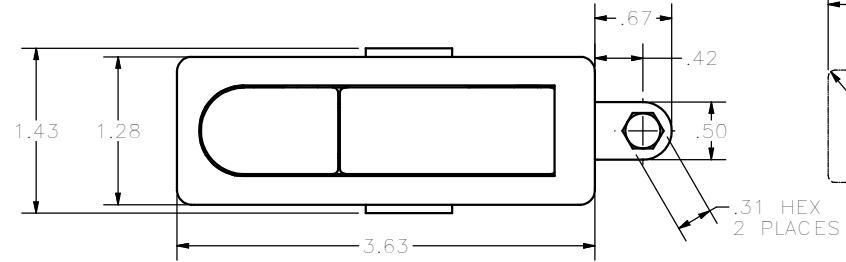
CONFIDENTIAL NOTICE: This drawing and the designs, specifications and engineering information disclosed hereon are the property of Eberhard Manufacturing Company and are not to be disseminated or reproduced without express written consent. The drawing is loaned in confidence and then only for consideration of the matter disclosed hereon. In accepting loan of this drawing, recipient agrees to keep it and the matter disclosed hereon in confidence and not to use nor permit their use in any way detrimental to Eberhard Manufacturing Company, Division of the Eastern Company, 21944 Drake Road, Cleveland, Ohio 44149-9712 © 2013 EBERHARD MFG. CO.

REVISION HISTORY			
REV	DESCRIPTION	EN	DATE
	REVISED, REDRAWN AND CONVERTED TO 3D	5592	2-22-13

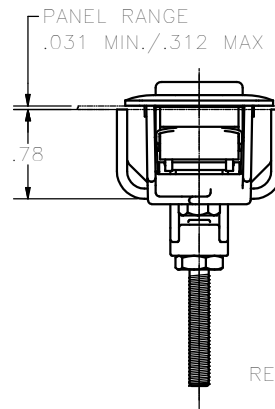
PART No.	FINISH	WALDIE	A	B	C
634	TEXTURE	(05)(30)	.13	.80	2.43
635	TEXTURE	(05)(30)	.75	1.25	2.86
636	TEXTURE	(05)(30)	1.25	1.75	3.43
637	TEXTURE	(05)(30)	1.75	2.25	3.89
634S	SMOOTH	(42)(03)(CS)	.13	.80	2.43
635S	SMOOTH	(42)(03)(CS)	.75	1.25	2.86
636S	SMOOTH	(42)(03)(CS)	1.25	1.75	3.43
637S	SMOOTH	(42)(03)(CS)	1.75	2.25	3.89



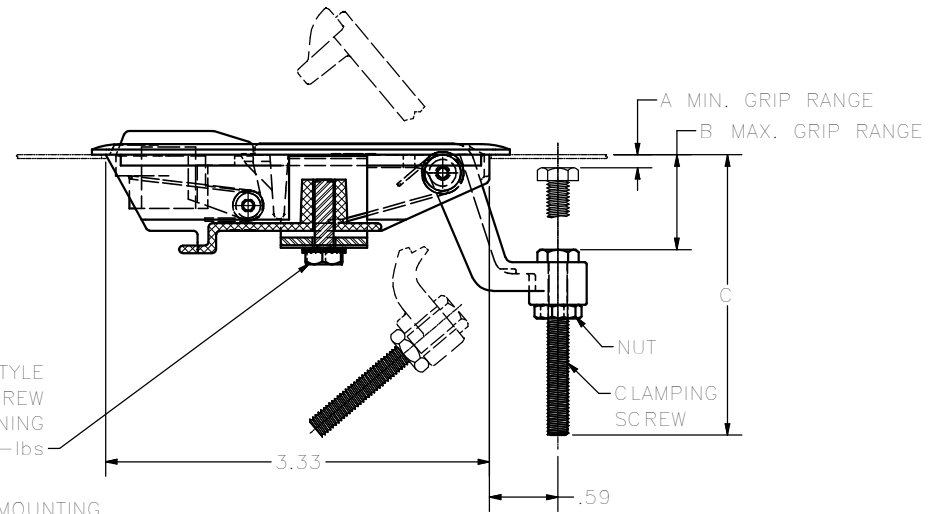
TEXTURED TOP VIEW



SUGGESTED OUTLINE OF CUTOUT



MOUNTING BRACKET



- NOTES:
- "SEMS" STYLE SCREW, CLAMPING SCREW, NUT, AND MOUNTING BRACKET TO BE SHIPPED LOOSE IN A SECURED POLY BAG INSIDE LARGER POLY BAG TO PREVENT SCRATCHING.
 - FINISH DESCRIPTIONS:
 - A. UNPLOISHED CHROME, FC (05)
 - B. BLACK POWDER COAT, FC (30)
 - C. TEXTURED BLACK POWDER, FC (42)
 - D. BRIGHT CHROME, FC (04)
 - E. CAMARO SILVER, FC (CS)

SUPERSEDES DRAWING 634 CHART SHEET 1 OF 2 DATED 6-14-05

THIS DOCUMENT IS IN ACCORDANCE WITH		PART	
4346 Y14.1E-2006		2/23/2013	
LINEAR MEASUREMENTS:		DATE	
UNLESS OTHERWISE SPECIFIED		DRAWN	
TOLERANCES ARE AS FOLLOWS:		FLP	
IN		SCALE	
MM		FULL	
ANGLES:	± 2° ± 2°	MATERIAL	
2 PLACE DEC.:	± .03 ± .76	CHK. BY	
3 PLACE DEC.:	± .015 ± .38	*	
ALL HOLES:	± .015 ± .13	PART NUMBER	
		634	

CUSTOMER PRINT
SHEET 1 OF 2

EBERHARD MANUFACTURING CO.
DIVISION OF
THE EASTERN COMPANY
CLEVELAND, OHIO 44149-9712

NAME
**NON LOCKING ADJUSTABLE TRIGGER
LATCH W/ BRACKET**

MATERIAL
*

PART NUMBER
634

C:\TEMP\657944c5-e14c-4e51-b0d1-ae6e6ea16fc7\Pro6\634\634 CH SH1.dwg