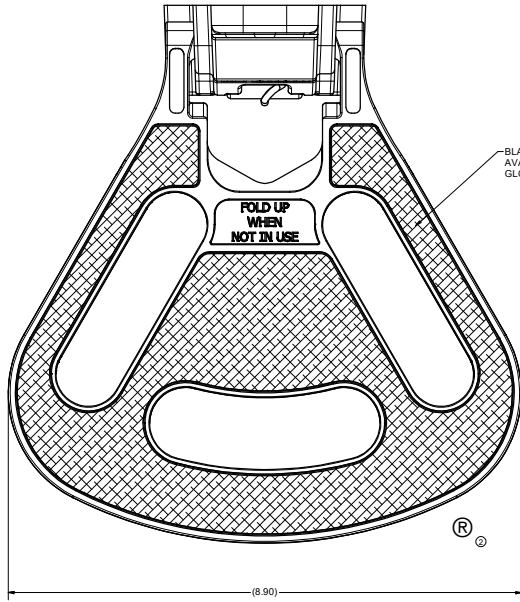


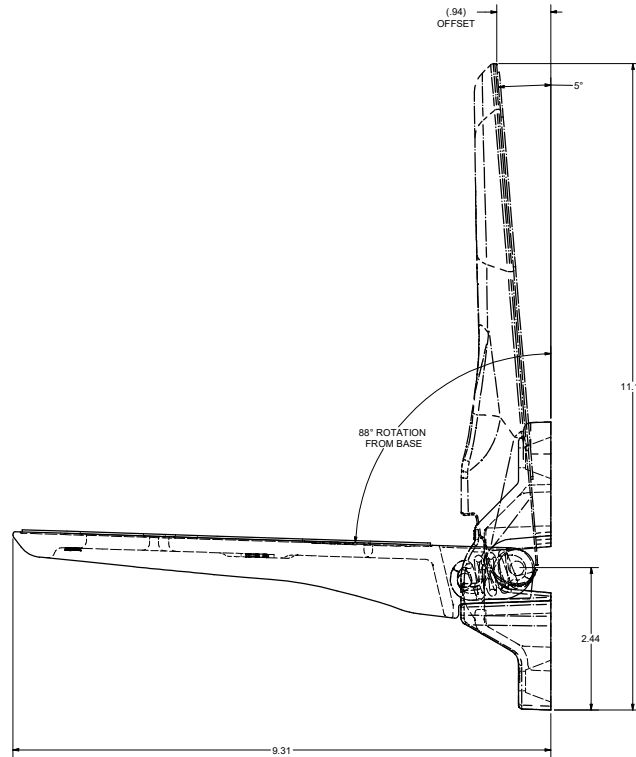
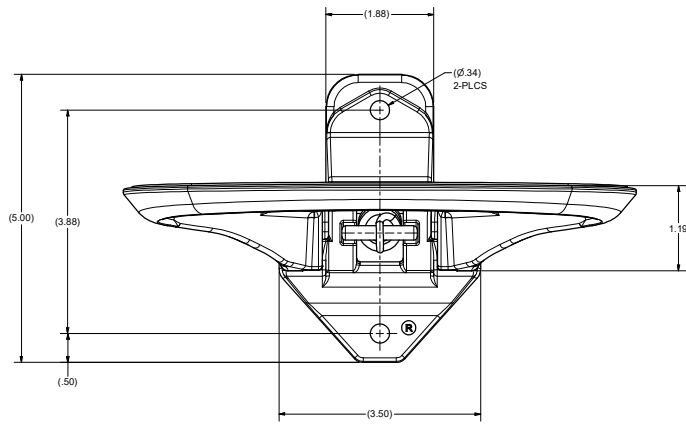
CONFIDENTIAL NOTICE: This drawing and the design, specifications and engineering information disclosed herein are the property of Eberhard Manufacturing Company and are not to be disseminated or reproduced without express written consent of Eberhard Manufacturing Company. In the event of any unauthorized disclosure, Eberhard Manufacturing Company shall be held harmless and shall not be bound by any oral or written agreement to the contrary.

REVISION HISTORY					
REV	DESCRIPTION	EN	DATE	REV BY	APVD BY
1	RELEASE	EN555R	12/9/11		
1	UPDATED PICTORIAL DUE TO CHANGE TO BRACKET (R060004-D), NO ASSEMBLY CHANGE.	EN555R	06/22/2012		
2	REVISED NOTE, ADDED.	5720	8-11-15	FLP	MR
3	ADDED NOTE	5723	10-2-15	FLP	MR
4	REMOVED FC (G) PER CPP 4164	5974	10/30/2020	DJK	MR



BLACK FOOTSTEP SURFACE GASKET AVAILABLE IN PHOSPHORESCENT GLOW IN THE DARK GASKET

- NOTE:
- 1) FOLDING FOOT STEP ASSEMBLY CONFORMS TO NFPA 1901 STANDARD FOR AUTOMOTIVE FIRE APPARATUS 1999 EDITION SECTIONS 13-7.1, 13-7.2, AND 13-7.3.
  - 2) STEP WILL SUSTAIN A MINIMUM STATIC LOAD OF 1000 LBS.
  - 3) PARTS IN ASSEMBLY INCLUDE MANGANESE BRONZE CAST FOOT STEP AND BRACKET, STAINLESS STEEL SPRING AND PINS.
  - 4) USE GRADE 8, 5/16" ROUND HEAD BOLTS FOR INSTALLATION.
  - 5) MATERIAL: CDA 86500 MANGANESE BRONZE FORMANLY: CDA 421 MANGANESE BRONZE
  - 6) FINISHES:
    - ① POLISHED BRIGHT CHROME (03) ASTM B456 SC3
    - CHROME FLASH (05) ASTM B456 SC3
    - E-COAT (23)
  - 7) PATENTS: No. 4,462,486 CAN; 1,209,161
  - 8) PATENTED STEP WITH SKID RESISTANT SURFACE. PATENT NOS. D455,076 US; 6,471,002
  - 9) TRADEMARK: THIS CONFIGURATION IS A TRADEMARK OF EBERHARD MFG. CO. REGISTERED IN THE U.S. PATENT AND TRADEMARK OFFICE
  - 10) ASSEMBLY MEETS REQUIREMENTS OF FEDERAL MOTOR CARRIER SAFETY ADMINISTRATION 49 CFR, PART 399.



NOTE:  
ALL DIMENSIONS ARE FOR REFERENCE

CUSTOMER PRINT  
SHEET 1 OF 2

EBERHARD MANUFACTURING CO.  
DIVISION OF  
THE EASTERN COMPANY  
CLEVELAND, OHIO 44116-9712

FOLDING FOOT STEP  
ASSEMBLY

606009

THIS DOCUMENT IS UNCONTROLLED WHEN PRINTED	
UNLESS OTHERWISE SPECIFIED	UNLESS OTHERWISE SPECIFIED
TOLERANCES UNLESS OTHERWISE SPECIFIED	TOLERANCES UNLESS OTHERWISE SPECIFIED
ANGLES	±0.1
PLACES DEC.	±0.05
PLACES DEC.	±0.05
PLACES DEC.	±0.05