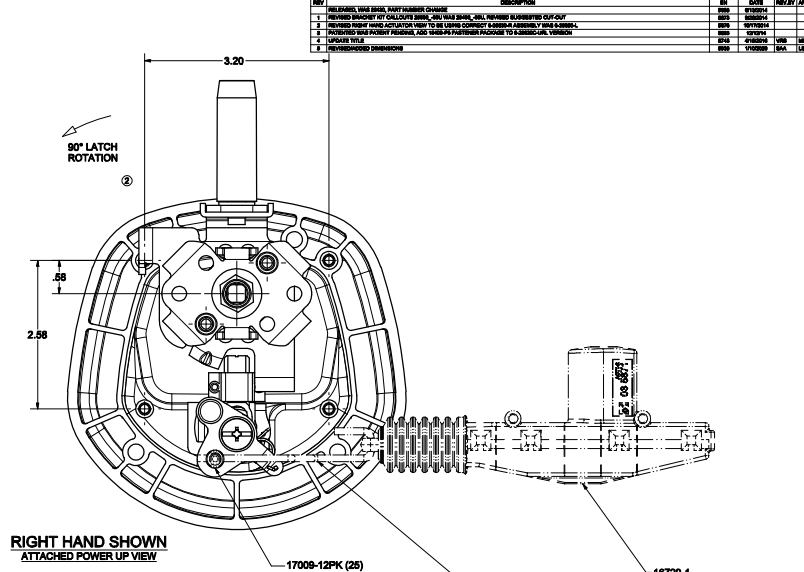
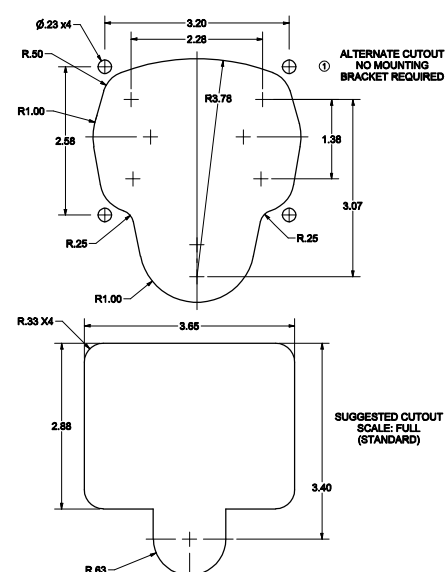
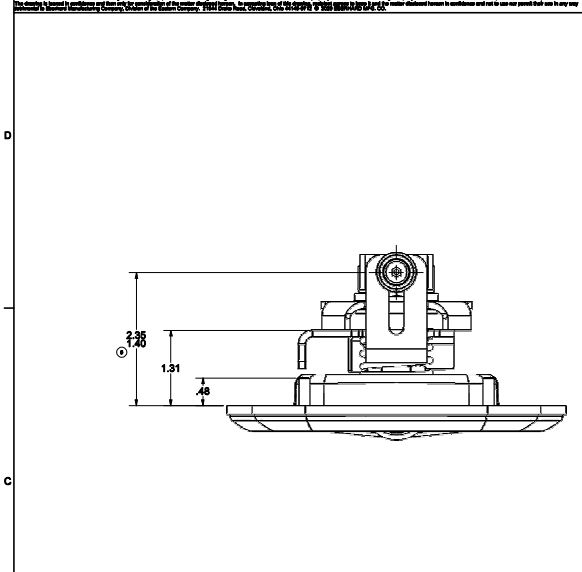
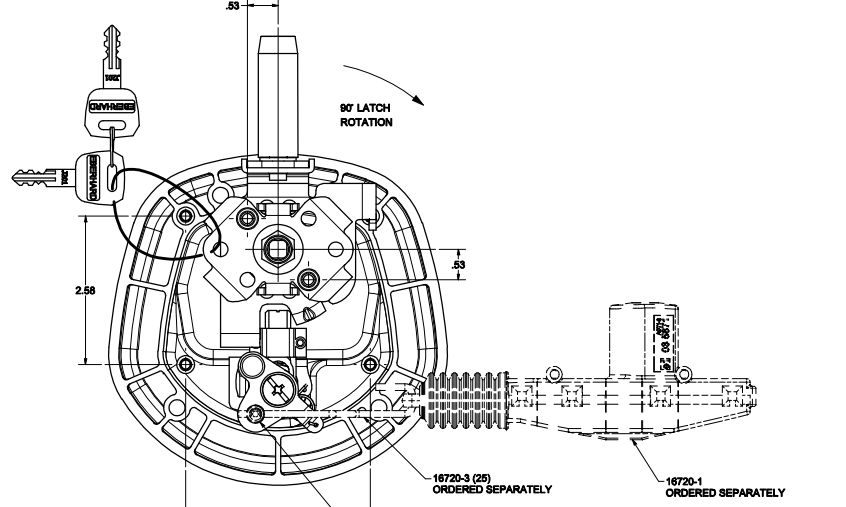
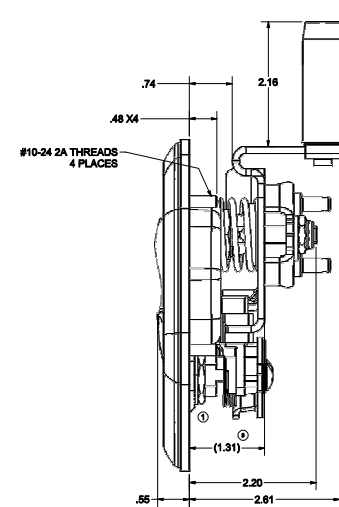
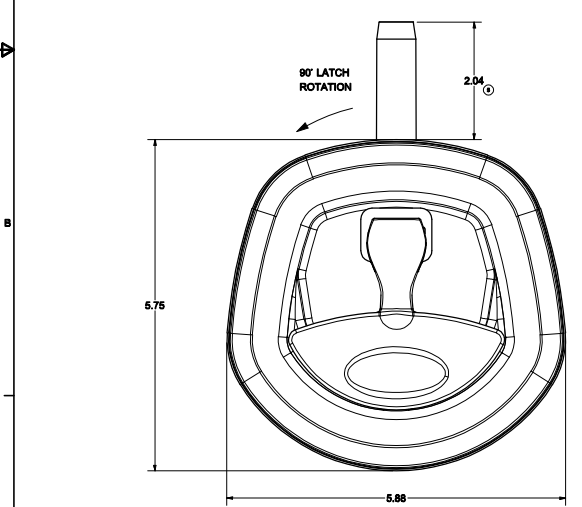


CONFIDENTIAL NOTICE: This drawing and the design, construction and engineering information contained herein are the property of Eberhard Manufacturing Company and are not to be distributed or reproduced without written consent of Eberhard Manufacturing Company. Eberhard Manufacturing Company, 17200 W. 26th St., Orem, UT 84057-2626. © 2008 Eberhard Manufacturing Company.

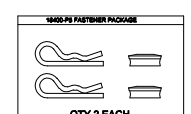


REV	DESCRIPTION	BY	DATE	CHK'D BY	APPROV
1	RELEASED THIS DRAWING PART NUMBER CHANGE	MS	07/20/08	MS	
2	REVISED BRACKET TO CALL OUT DIM. .48 INSTEAD OF .48 INSTEAD OF .48	MS	08/04/08	MS	
3	REVISED DRAWING TO CALL OUT DIM. .48 INSTEAD OF .48 INSTEAD OF .48	MS	08/04/08	MS	
4	REVISED THIS DRAWING TO CALL OUT DIM. .48 INSTEAD OF .48 INSTEAD OF .48	MS	08/04/08	MS	
5	REVISED THIS DRAWING TO CALL OUT DIM. .48 INSTEAD OF .48 INSTEAD OF .48	MS	08/04/08	MS	



- NOTES:
- FINISHES:
 - A. BRIGHT POLISHED RECEPTACLE AND CHROME HANDLE: FC (03)
 - B. BLACK POWDER (TEXTURED) RECEPTACLE AND HANDLE: FC (42)
 - C. BLACK POWDER (TEXTURED) RECEPTACLE AND CHROME HANDLE: FC (35)
 - 35 IN-LBS MAX. TORQUE ON MOUNTING STUDS
 - KEY CYLINDER WITH 10 KEY CHANGES, J201 THRU J210 SUPPLIED WITH TWO DOUBLE BITTED KEYS
- EXAMPLE ORDER AS: 6-28630-RL-JXX-XX

FINISH CODE (SEE NOTE #1)
KEY NUMBER



FASTENER PACKAGE CONTAINED IN 6-28630C-URL ONLY

ASSEMBLY PIN	MOUNTING BRACKET KIT PIN	FASTENER KIT
6-28630-RL (1)	NONE	NONE
6-28630A-URL	28630A-50U	NONE
6-28630B-URL	28630B-50U	NONE
6-28630C-URL	28630C-50U	16400-PS-3

PATENTED

THE DOCUMENT IS UNCLASSIFIED UNLESS INDICATED OTHERWISE

KEY LOCKING COMPRESSION LATCH - POWER LOCKING

EBERHARD MANUFACTURING CO.
DIVISION OF
THE EBERHARD COMPANY
OURLAND, OHIO 44148-8712

6-28630-RL

CUSTOMER PRINT SHEET 1 OF 2
LEFT HAND SHOWN
RIGHT HAND OPPOSITE

C:\TEMP\308776-8302-1006-0007-505866\ASSET\PRO\28630RL-01-0111.dwg