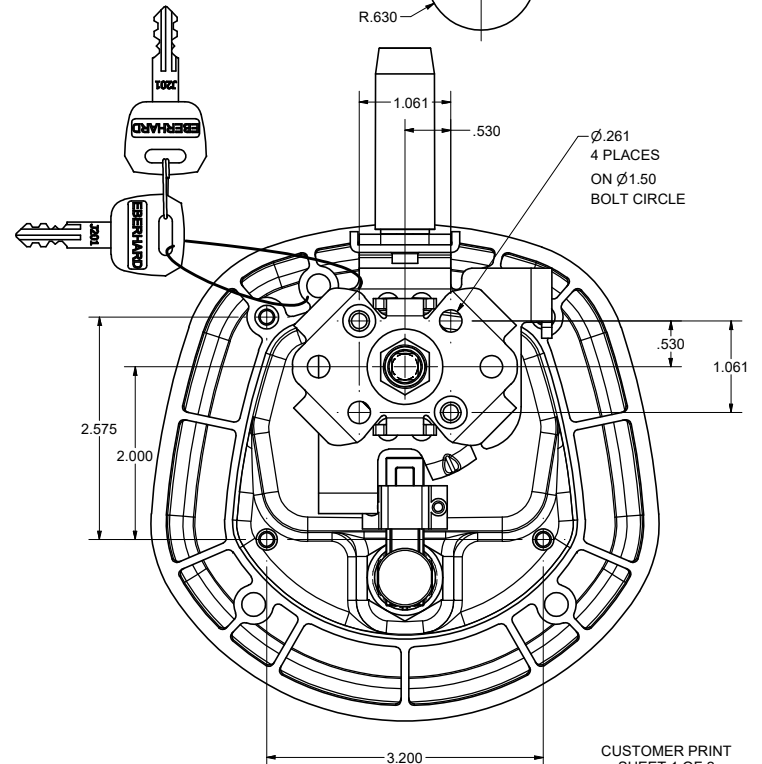
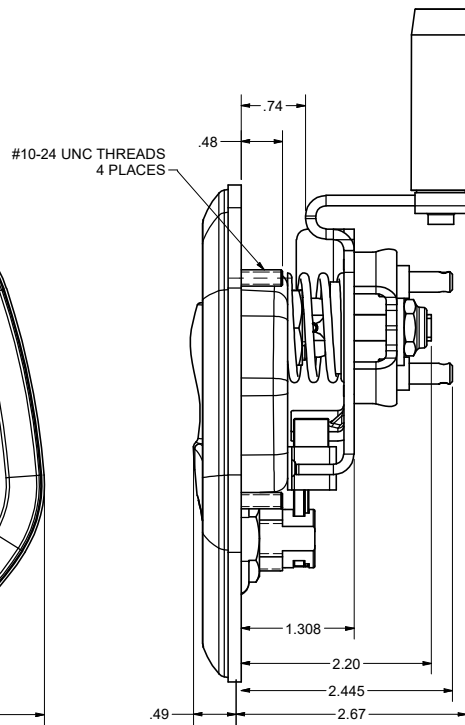
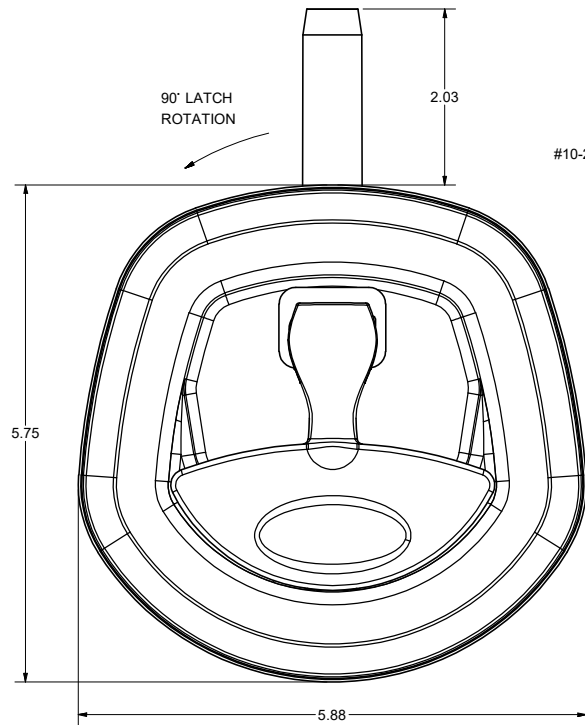
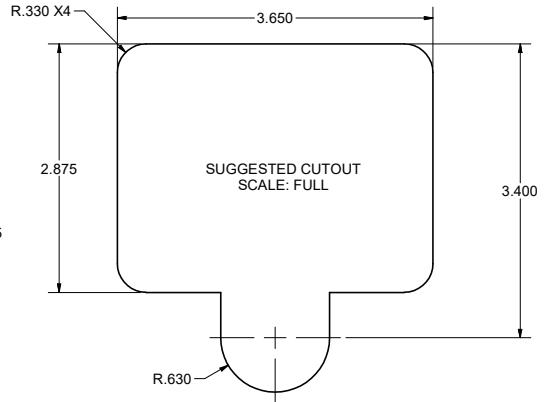
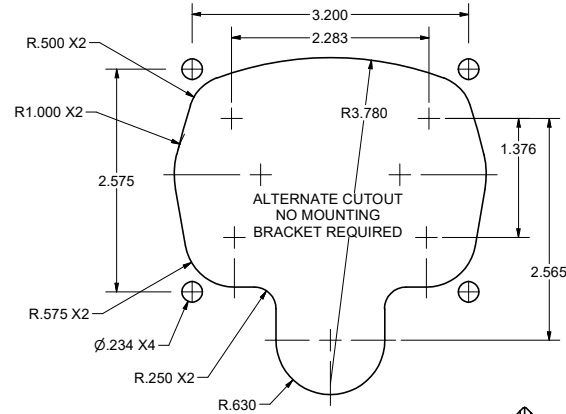
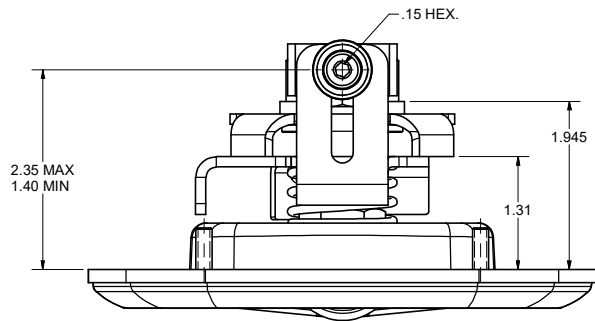


CONFIDENTIAL NOTICE: This drawing and the designs, specifications and engineering information disclosed herein are the property of Eberhard Manufacturing Company and are not to be disseminated or reproduced without express written consent. The drawing is loaned in confidence and then only for consideration of the matter disclosed herein. In accepting loan of this drawing, recipient agrees to keep it and the matter disclosed herein in confidence and not to use nor permit their use in any way whatsoever by Eberhard Manufacturing Company, Division of the Eastern Company, 2184 Drake Road, Cleveland, Ohio 44116-9712. © 2015 EBERHARD MFG. CO.

REVISION HISTORY		EN	DATE	REV. BY	APP'D BY
REV	DESCRIPTION	EN	DATE	REV. BY	APP'D BY
	RELEASED REF PP 12800 B	5833	12-22-17	FLP	MR



- NOTES:
- FINISHES:
 - A. BRIGHT POLISHED RECEPTACLE AND CHROME HANDLE: FC (03)
 - B. BLACK POWDER (TEXTURED) RECEPTACLE AND HANDLE, FC (42)
 - C. BLACK POWDER (TEXTURED) RECEPTACLE AND CHROME HANDLE: FC (35)
 - 35 IN-LBS MAX. TORQUE ON MOUNTING STUDS
 - KEY CYLINDER WITH 10 KEY CHANGES, J201 THRU J210 SUPPLIED WITH TWO DOUBLE BITTED KEYS (NOT SHOWN)
EXAMPLE ORDER AS: 6-28430-R/L-JXXX-XX

KEY NUMBER → FINISH CODE (SEE NOTE #1)

ASSEMBLY P/N	PANNEL THICKNESS	MOUNTING BRACKET KIT P/N	CUTOUT TYPE
6-28430-RL	.047	NONE	ALTERNATE
6-28430A-URL	.047	28400A-60U	STANDARD
6-28430B-URL	.079	28400B-60U	STANDARD
6-28430C-URL	.135	28400C-60U	STANDARD

PATENTED

THIS DOCUMENT IS IN ACCORDANCE WITH ASME Y14.19-2009	
LINEAR MEASURE: INCH	DATE 12/22/2017
UNLESS OTHERWISE SPECIFIED TOLERANCES ARE AS FOLLOWS:	DR BY FLP
IN	MM
ANGLES: # 2 # 2	SCALE: FULL
2 PLACE DEC: # .03 # .76	CONV BY
3 PLACE DEC: # .015 # .38	
ALL HOLES: # .005 # .13	

EBERHARD MANUFACTURING CO.	
DIVISION OF THE EASTERN COMPANY CLEVELAND, OHIO 44148-9712	
NAME KEY LOCKING COMPRESSION LATCH - THREE POINT WITH LONG ROLLER	
MATERIAL	PART NUMBER 6-28430-RL

CUSTOMER PRINT SHEET 1 OF 2
LEFT HAND SHOWN
RIGHT HAND OPPOSITE