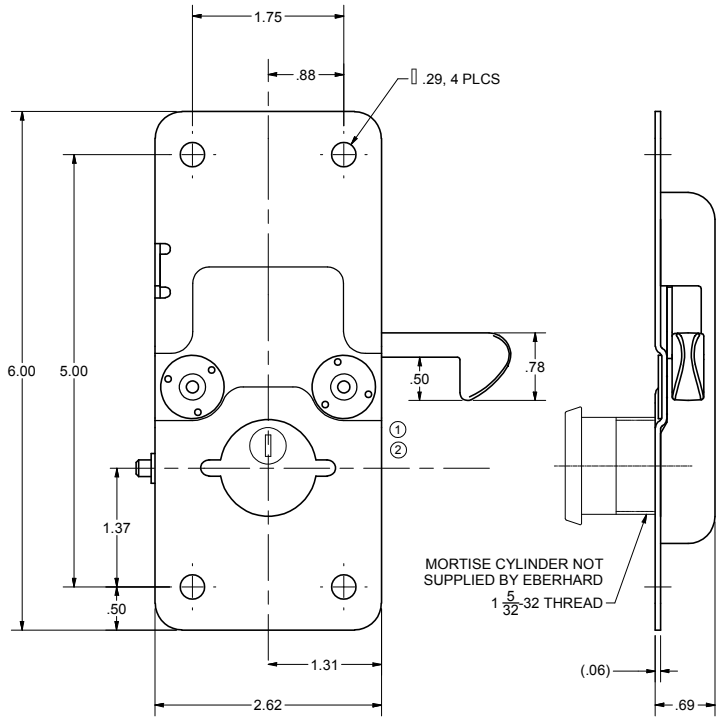
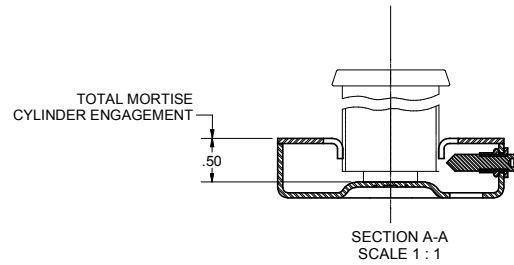
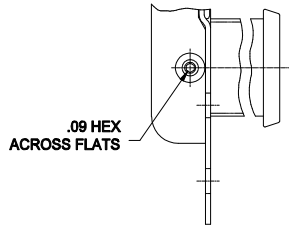
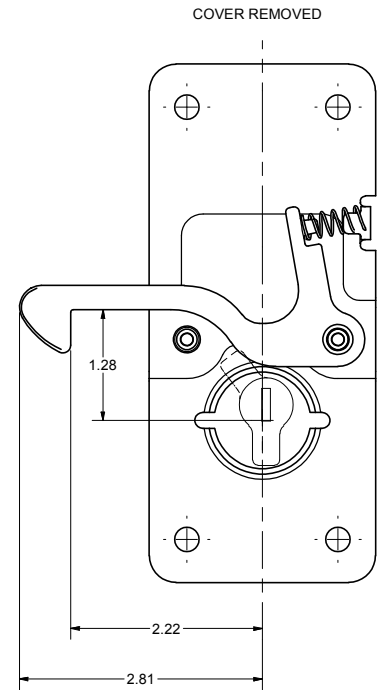
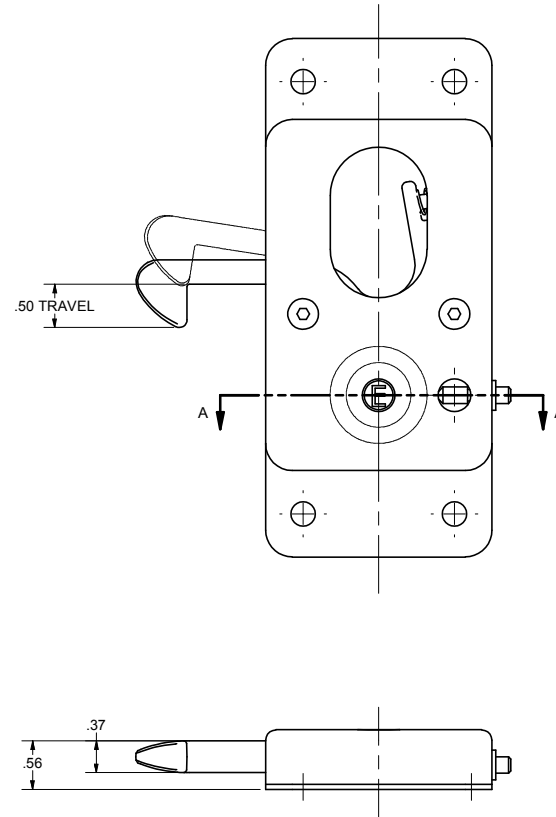


CONFIDENTIAL NOTICE: This drawing and the designs, specifications and engineering information disclosed hereon are the property of Eberhard Manufacturing Company and are not to be disseminated or reproduced without express written consent. The drawing is loaned in confidence and then only for consideration of the matter disclosed hereon. In accepting loan of this drawing, recipient agrees to keep it and the matter disclosed hereon in confidence and not to use nor permit their use in any way unrelated to Eberhard Manufacturing Company, Division of the Eastern Company, 2184 Drake Road, Cleveland, Ohio 44148-9712, © 2015 EBERHARD MFG. CO.

REVISION HISTORY					
REV	DESCRIPTION	DN	DATE	REV BY	APVD BY
CONVERTED TO 3D		5698	8-31-12		
1	REVISED VIEW TO DETAIL	6877	10-24-11	FLP	MR
2	REVISED VIEW TO DETAIL	5694	3-13-15	FLP	MR



MORTISE CYLINDER NOT SUPPLIED BY EBERHARD
1 5/32 THREAD



RIGHT HAND OPPOSITE
LEFT HAND SHOWN
CUSTOMER PRINT
SHEET 1 OF 2

FINISH: (25) ZINC

SUPERSEDES DRAWING 5698-AL/R DATED 4-1-08.

LINEAR MEASURE INCH UNLESS OTHERWISE SPECIFIED TOLERANCES ARE AS FOLLOWS:		DATE 8/31/2012	NAME MORTISE/SLIDING DOOR LOCK ASSEMBLY
2 PLACE DEC: .010 3 PLACE DEC: .015 ALL HOLES: .005	.010 .015 .010	DR BY FLP	SCALE FULL
MATERIAL *		CHK BY *	PART NUMBER 5698-AL/R