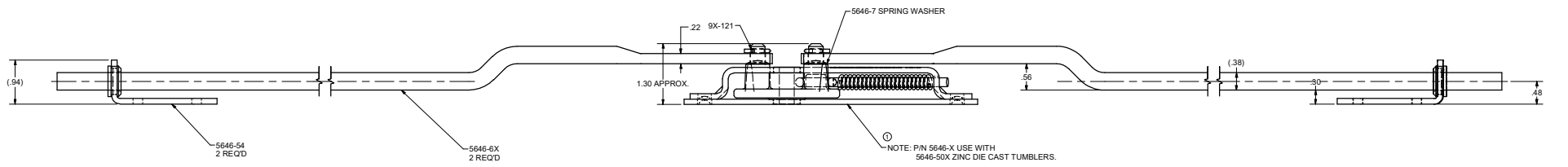
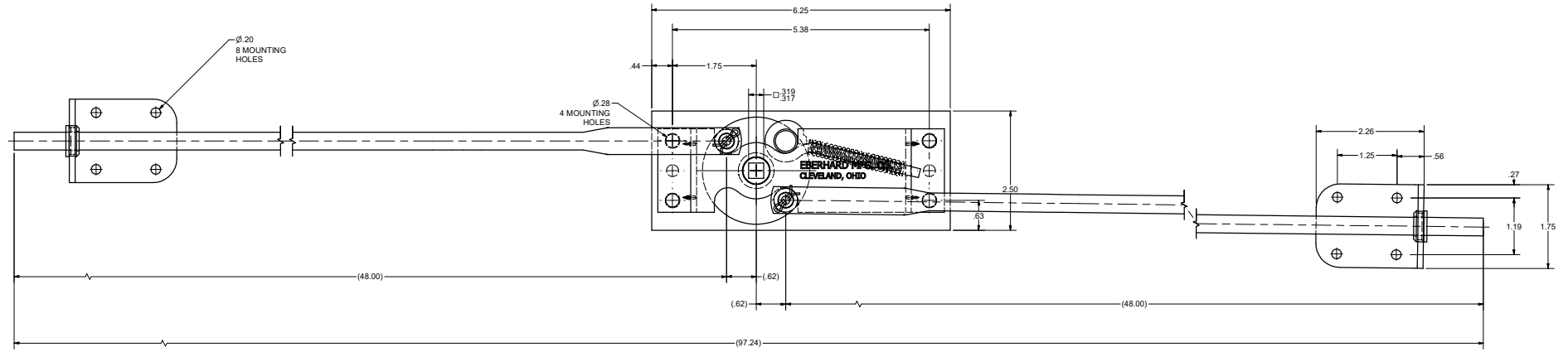


CONFIDENTIAL NOTICE: This drawing and the design, identification and engineering information disclosed herein are the property of Eberhard Manufacturing Company and are not to be distributed or reproduced without express written consent. The drawing is confidential and may only be furnished to authorized personnel in accordance with the master production release. No part of this drawing, without express written consent, shall be used for any purpose other than that for which it was prepared. Eberhard Manufacturing Company, Division of The Eastern Company, 44150 Lorain Road, Cleveland, Ohio 44130-2122, © 2011 EBERHARD MFG. CO.

REV.	DESCRIPTION	DA	DATE	REV BY	APP'D BY
1	ISSUED FOR PRODUCTION AND CHECKED FOR D.P.	SM	12/20/11		
1	REVISED NOTE: SEE P/N 5646-X	SM	2/22/12	FLD	MS



SUPERSEDES DRAWING 5646X DATED 9-23-94

THE DOCUMENT IS IN ACCORDANCE WITH ASME Y14.2-2009		<b>EBERHARD MANUFACTURING CO.</b> DIVISION OF THE EASTERN COMPANY CLEVELAND, OHIO 44139-1112	
<b>DESIGNATION</b> TWO POINT DEAD BOLT LOCK		PART NUMBER: 5646-X	
THE DIMENSIONS SHOWN UNLESS SPECIFIED TOLERANCES ARE AS FOLLOWS:	DIMENSION FINISH	DIMENSION FINISH	DIMENSION FINISH
ANGLES: ± .5° PLACES DEC: ± .015 SPACES DEC: ± .010 ALL HOLES: ± .010	.125 .0004 .0004 .0004	.125 .0004 .0004 .0004	.125 .0004 .0004 .0004

C:\Working\_Folder\AmeP\Prod\5646X\5646-X.dwg