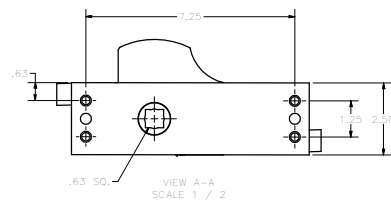
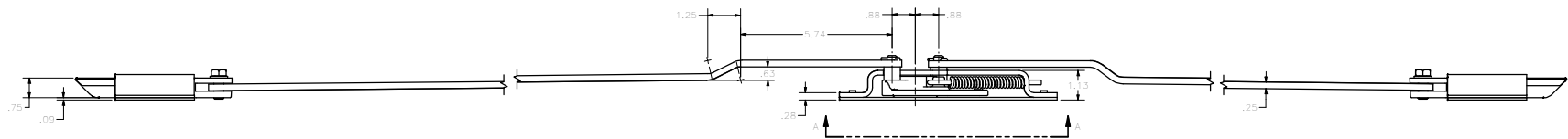
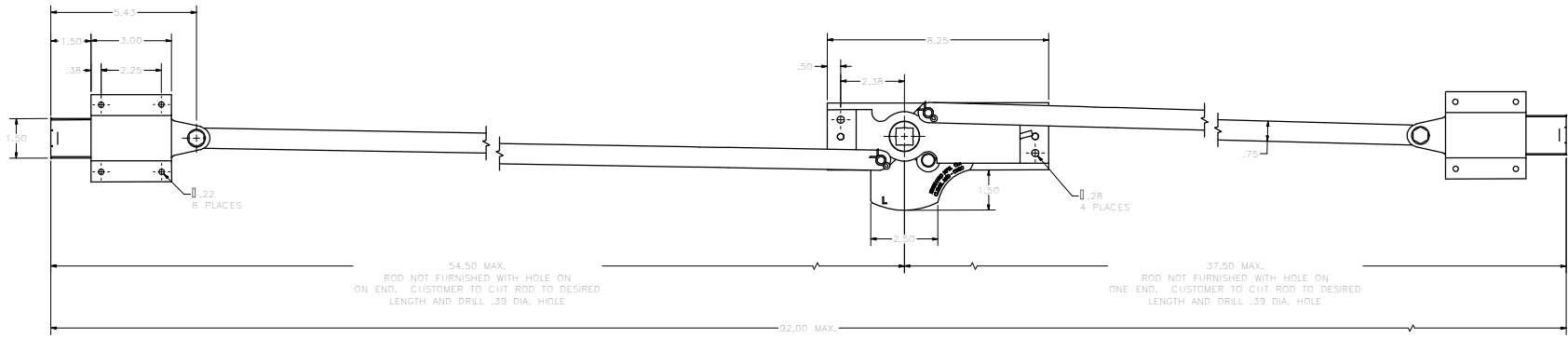


CONFIDENTIAL NOTICE This drawing and the design identification and engineering information disclosed herein are the property of Eberhard Manufacturing Company and are not to be distributed or reproduced without express written consent. The drawing is issued in confidence and may only be used for the specific purpose for which it was prepared. It is the responsibility of the user to ensure that the drawing is used for the intended purpose and not to be used for any other purpose. Eberhard Manufacturing Company reserves the right to change this drawing without notice. © 2012 EBERHARD MFG. CO.

REV.	DESCRIPTION	DATE	BY
1	ISSUED FOR PRODUCTION	08/14/12	MMZ



5624-P24 LOCK PACKAGE
 CONSIST OF THE:
 P-24 (9 X 24 PLASTIC BAG)
 5624-P5 (FASTNER PACKAGE)
 5624-50 (CENTER CASE ASSEMBLY)
 5631-11 (END BOLT CASE COVER) 2 REQ'D
 5631-12 (END BOLT BACK PLATE) 2 REQ'D
 1-5631-13 (SLIDE BOLT) 2 REQ'D

SUPERSEDES DRAWING 5624-U DATED 10-20-09.

EBERHARD MANUFACTURING CO.		DIVISION OF THE EASTERN COMPANY 100 EASTERN AVENUE MILWAUKEE, WISCONSIN 53212	
SUBSIDIARY OF EBERHARD		880210	HEAVY DUTY DOOR LOCK
QUANTITY:	1	PKT	
2 PLACE DEC:	1	1	
3 PLACE DEC:	1	1	
			5624-U

C:\Working_Folder\view\Fred\5624\5624-U.dwg