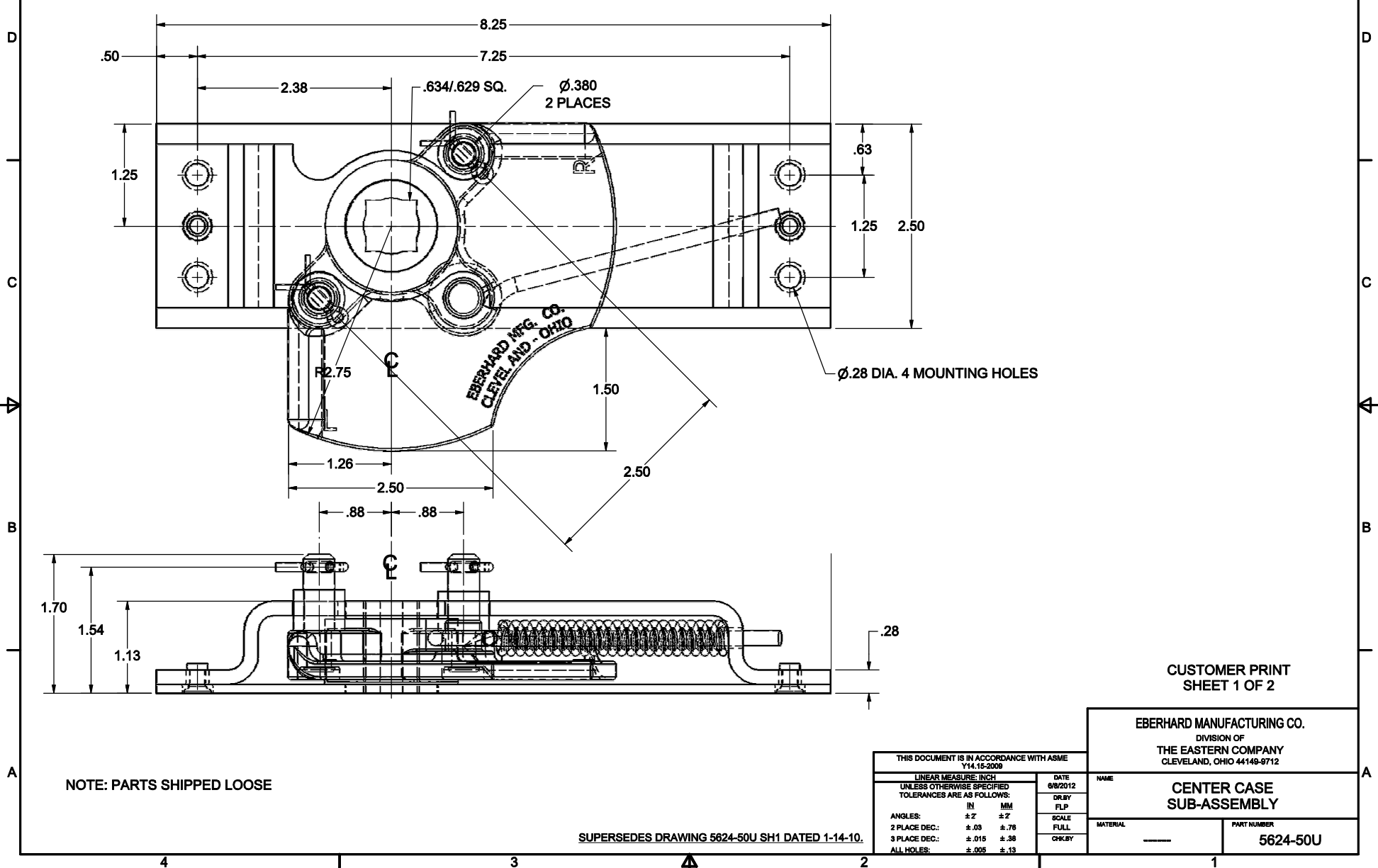


CONFIDENTIAL NOTICE: This drawing and the designs, specifications and engineering information disclosed hereon are the property of Eberhard Manufacturing Company and are not to be disseminated or reproduced without express written consent. The drawing is loaned in confidence and then only for consideration of the matter disclosed hereon. In accepting loan of this drawing, recipient agrees to keep it and the matter disclosed hereon in confidence and not to use nor permit their use in any way detrimental to Eberhard Manufacturing Company, Division of the Eastern Company, 21944 Drake Road, Cleveland, Ohio 44149-8712. © 2012 EBERHARD MFG. CO.

REVISION HISTORY					
REV	DESCRIPTION	EN	DATE	REV.BY	APVD.BY
1	REVISED, REDRAWN AND CONVERTED TO 3D	5557	6-8-12		
1	STUD DIAMETER ADDED TO DRAWING	5962	5/22/2020	DJK	MR



NOTE: PARTS SHIPPED LOOSE

SUPERSEDES DRAWING 5624-50U SH1 DATED 1-14-10.

CUSTOMER PRINT
SHEET 1 OF 2

EBERHARD MANUFACTURING CO. DIVISION OF THE EASTERN COMPANY CLEVELAND, OHIO 44149-8712	
NAME	CENTER CASE SUB-ASSEMBLY
MATERIAL	PART NUMBER 5624-50U

THIS DOCUMENT IS IN ACCORDANCE WITH ASME Y14.15-2009			
LINEAR MEASURE: INCH		DATE: 6/8/2012	
UNLESS OTHERWISE SPECIFIED TOLERANCES ARE AS FOLLOWS:			
IN		MM	
ANGLES:	± 2°	± 2°	
2 PLACE DEC.:	± .03	± .76	
3 PLACE DEC.:	± .015	± .38	
ALL HOLES:	± .005	± .13	
DRBY	FLP	SCALE	FULL
CHKBY			

C:\TEMP\pibcafc3c-700e-4b58-a04f-2a4fd6a3da95\Proj\5624\5624-50U SH1.idw