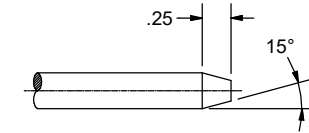


CONFIDENTIAL NOTICE: This drawing and the designs, specifications and engineering information disclosed hereon are the property of Eberhard Manufacturing Company and are not to be disseminated or reproduced without express written consent. The drawing is loaned in confidence and then only for consideration of the matter disclosed hereon. In accepting loan of this drawing, recipient agrees to keep it and the matter disclosed hereon in confidence and not to use nor permit their use in any way detrimental to Eberhard Manufacturing Company, Division of the Eastern Company, 21944 Drake Road, Cleveland, Ohio 44149-9712 © 2016 EBERHARD MFG. CO.

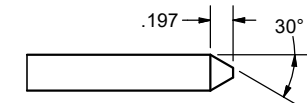
REVISION HISTORY					
REV	DESCRIPTION	EN	DATE	REV. BY	APVD. BY
	CONVERTED TO 3D	5681	11-30-12		
1	ADDED PART# 17031 TO CHART	5712	7/17/2015	KAB	MR
2	CHANGED PART NUMBER 17031 FROM STANDARD TIP TO OPTION 1 TIP (CHAMFERED)	5713	7/24/15	KAB	MR
3	ADDED: TIP 2, REVISED CHART	5737	1-29-16	FLP	MR

LOCK ROD			
PART NO.	A	TIP STYLE	AVAILABLE FINISH
5611-5X	34.00	STD	(25)
16273	48.00	STD	(25)
16498	29.44	STD	(25)
16620	20.866	STD	(25)
16625	6.00	STD	(25)
16633	39.00	STD	(25)
16640	11.50	STD	(25)
17011	28.25	STD	(25)
17031	23.62	OPT. 2	(25)

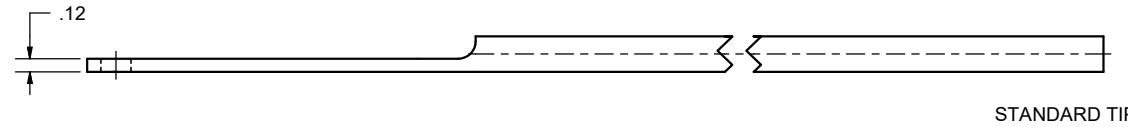
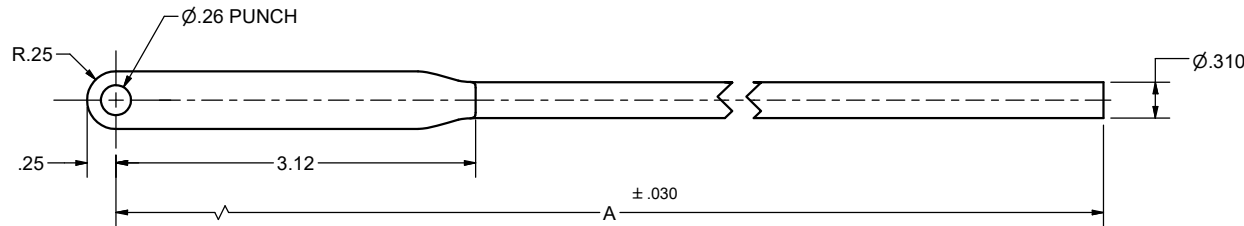
③ ① ②



OPTIONAL TIP NO. 1



③ OPTIONAL TIP NO. 2



CUSTOMER PRINT
SHEET 1 OF 2

EBERHARD MANUFACTURING CO.
DIVISION OF
THE EASTERN COMPANY
CLEVELAND, OHIO 44149-9712

THIS DOCUMENT IS IN ACCORDANCE WITH ASME
Y14.15-2009

LINEAR MEASURE: INCH		DATE
UNLESS OTHERWISE SPECIFIED TOLERANCES ARE AS FOLLOWS:		11/30/2012
	IN	DR. BY
ANGLES:	± 2°	FLP
2 PLACE DEC.:	± .03	SCALE
3 PLACE DEC.:	± .015	FULL
ALL HOLES:	± .005	CHK. BY
	± .13	

NAME		
5/16 DIA LOCK ROD		
MATERIAL	PART NUMBER	CHART
BRIGHT BASIC WIRE	5611-5X	

NOTE: FINISH: ZINC PLATE, FC (25)

SUPERSEDES DRAWING 5611-5XCHART SHEET 1 OF 2 DATED 3-23-07

C:\TEMP\ar7664348-4c52-4ff5-b8a2-1ad0d149c168\FASSTENER\RODS\COINED ON END .313 DIA\5611-5X SH1.iptw