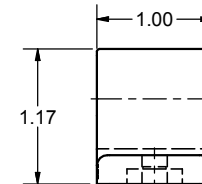
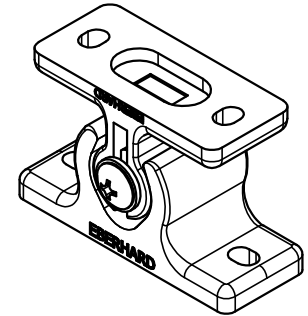
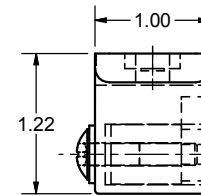
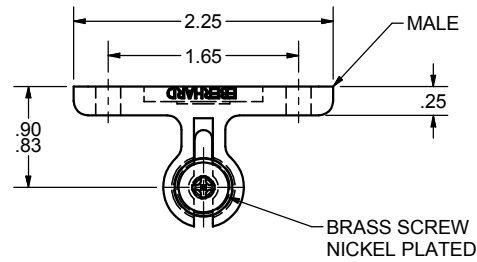
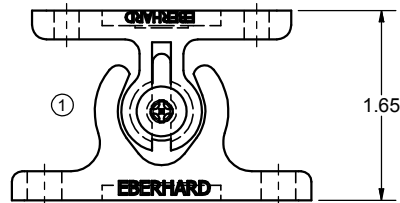
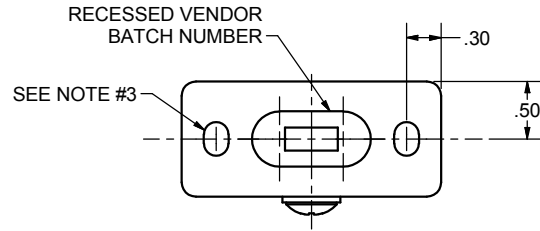
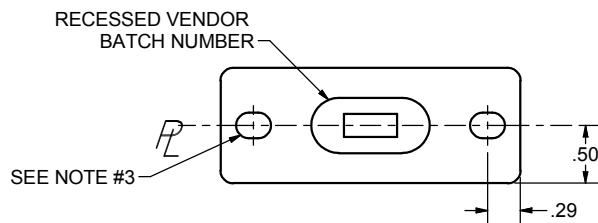
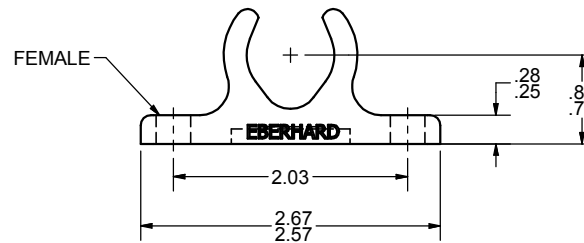


CONFIDENTIAL NOTICE: This drawing and the designs, specifications and engineering information disclosed hereon are the property of Eberhard Manufacturing Company and are not to be disseminated or reproduced without express written consent. The drawing is loaned in confidence and then only for consideration of the matter disclosed hereon. In accepting loan of this drawing, recipient agrees to keep it and the matter disclosed hereon in confidence and not to use nor permit their use in any way detrimental to Eberhard Manufacturing Company, Division of the Eastern Company, 21944 Drake Road, Cleveland, Ohio 44149-9712 © 2013 EBERHARD MFG. CO.

REVISION HISTORY					
REV	DESCRIPTION	EN	DATE	REV. BY	APVD. BY
1	REVISED, REDRAWN AND CONVERTED TO 3D	5588	1-25-13		
1	REVISED TO DETAIL	5702	5-8-15	FLP	MR



ASSEMBLY PART NO.	MALE/ FEMALE PART NO.	DESCRIPTION
1-555-2	555-1 (01)	MALE, WHITE
	555-2 (01)	FEMALE, WHITE
3-555-4	555-3 (MB)	MALE, BLACK
	555-4 (MB)	FEMALE, BLACK



- NOTES:**
1. FORCE TO ENGAGE 28-59 LBS.
 2. FORCE TO DISENGAGE 17-44 LBS.
 3. MOUNTING SLOTS .295 x .216
 4. MATERIAL: SUPER TOUGH NYLON

SUPERSEDES DRAWING 555-CHT DATED 3-26-01

THIS DOCUMENT IS IN ACCORDANCE WITH ASME Y14.15-2009			
LINEAR MEASURE: INCH		DATE: 1/25/2013	
UNLESS OTHERWISE SPECIFIED TOLERANCES ARE AS FOLLOWS:			
	IN	MM	
ANGLES:	∠ 2∠	∠ 2∠	
2 PLACE DEC.:	∠ .03	∠ .76	
3 PLACE DEC.:	∠ .015	∠ .38	
ALL HOLES:	∠ .005	∠ .13	

EBERHARD MANUFACTURING CO. DIVISION OF THE EASTERN COMPANY CLEVELAND, OHIO 44149-9712		
NAME ADJUSTABLE DOOR HOLDER		
MATERIAL	PART NUMBER	CHART
SEE NOTE	555	