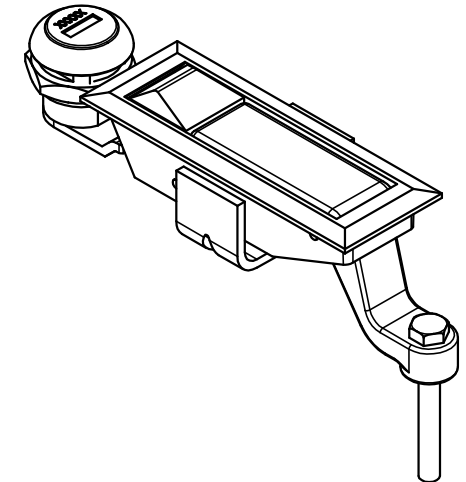
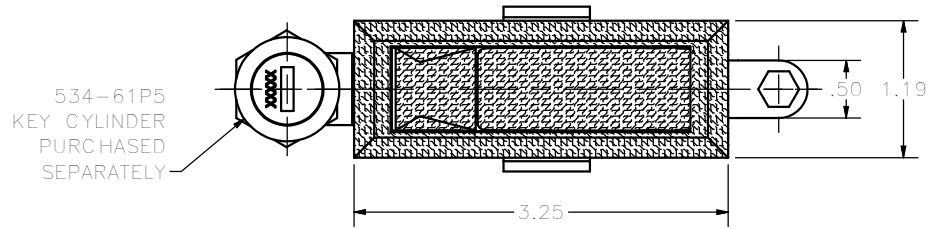
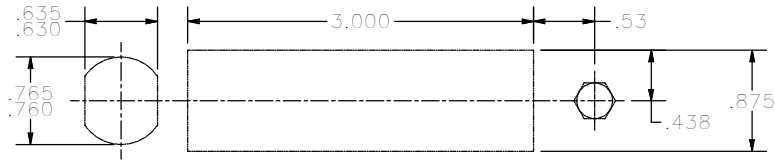
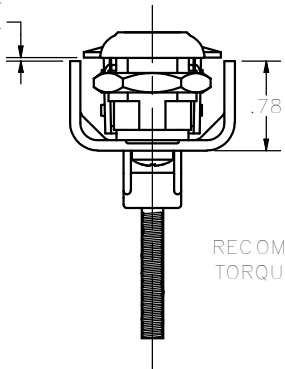


CONFIDENTIAL NOTICE: This drawing and the designs, specifications and engineering information disclosed hereon are the property of Eberhard Manufacturing Company and are not to be disseminated or reproduced without express written consent. The drawing is loaned in confidence and then only for consideration of the matter disclosed hereon. In accepting loan of this drawing, recipient agrees to keep it and the matter disclosed hereon in confidence and not to use nor permit their use in any way detrimental to Eberhard Manufacturing Company, Division of the Eastern Company, 21944 Drake Road, Cleveland, Ohio 44149-9712 © 2013 EBERHARD MFG. CO.

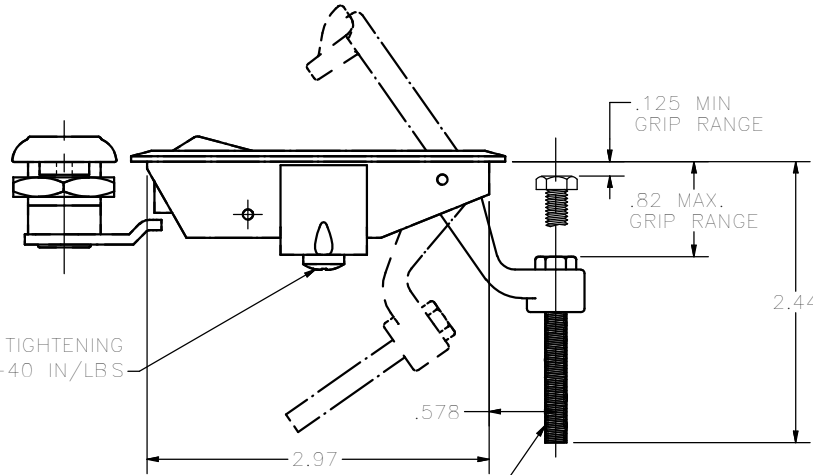
REVISION HISTORY			
REV	DESCRIPTION	EN	DATE
1	REVISED, REDRAWN AND CONVERTED TO 3D	5593	3-1-13



PANEL RANGE
.312 MAX
.031 MIN.



RECOMMENDED TIGHTENING
TORQUE = 30-40 IN/LBS



RECOMMENDED TIGHTENING
TORQUE = 5-10 IN-LBS

NOTE: SCREWS AND BRACKET TO BE SHIPPED
LOOSE IN A SECURED POLY BAG INSIDE
LARGER POLY BAG TO PREVENT SCRATCHING

CUSTOMER PRINT
SHEET 1 OF 2

EBERHARD MANUFACTURING CO.
DIVISION OF
THE EASTERN COMPANY
CLEVELAND, OHIO 44149-9712

THIS DOCUMENT IS IN ACCORDANCE WITH		DATE
ASME Y14.15-2009		3/1/2013
UNLESS OTHERWISE SPECIFIED TOLERANCES ARE AS FOLLOWS:		DESIGN
FRACTIONS		FLP
ANGLES: ° ' "		SCALE
2 PLACE DEC.: .03 .06		FULL
3 PLACE DEC.: .015 .038		MATERIAL
ALL DIMENSIONS IN INCHES UNLESS OTHERWISE SPECIFIED		CHECK BY
		PART NUMBER

NAME	
ADJUSTABLE TRIGGER LATCH W/ THICKER BRACKET	
MATERIAL	PART NUMBER
-----	534

SUPERSEDES DRAWING 534 DATED 9-10-02.