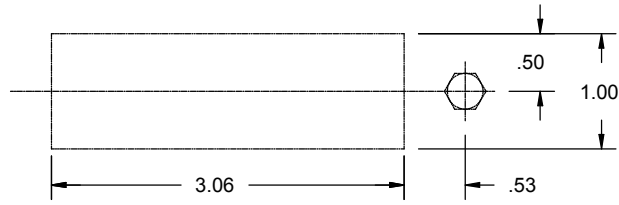
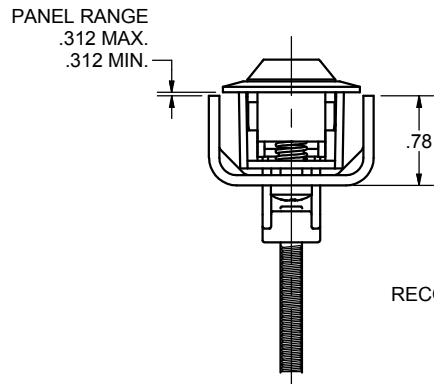
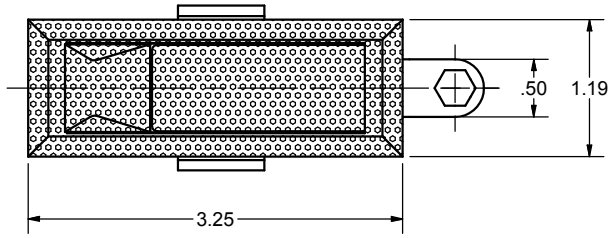


CONFIDENTIAL NOTICE: This drawing and the designs, specifications and engineering information disclosed hereon are the property of Eberhard Manufacturing Company and are not to be disseminated or reproduced without express written consent. The drawing is loaned in confidence and then only for consideration of the matter disclosed hereon. In accepting loan of this drawing, recipient agrees to keep it and the matter disclosed hereon in confidence and not to use nor permit their use in any way detrimental to Eberhard Manufacturing Company, Division of the Eastern Company, 21944 Drake Road, Cleveland, Ohio 44149-9712 © 2013 EBERHARD MFG. CO.

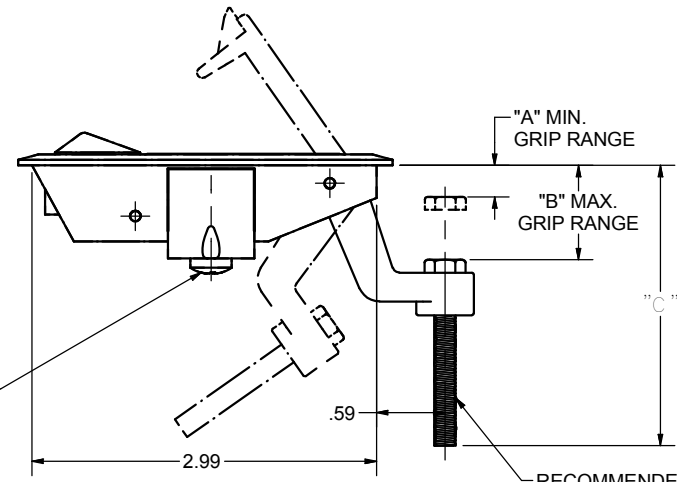
REVISION HISTORY			
REV	DESCRIPTION	EN	DATE
	REVISED, REDRAWN AND CONVERTED TO 3D	5593	3-1-13



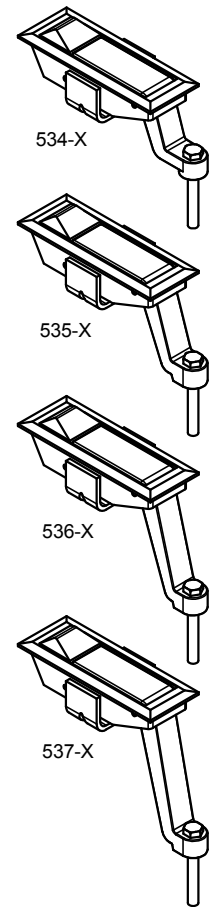
SUGGESTED OUTLINE OF CUTOUT



RECOMMENDED TIGHTENING TORQUE = 30-40 IN/LBS



RECOMMENDED TIGHTENING TORQUE = 5-10 IN/LBS



ADJUSTABLE TRIGGER LATCH			
PART NO.	A	B	C
534-X	.13	.84	2.43
535-X	.75	1.25	2.93
536-X	1.25	1.75	3.43
537-X	1.75	2.25	3.93

- NOTES:
 1. SCREWS AND BRACKET SHIPPED UN-ASSEMBLED IN SECURED POLY BAG.
 2. FINISHES:
 A. CHROME, FC (05)
 B. BLACK POWDER COAT, FC (30)

SUPERSEDES DRAWING 534-X CHART SHEET 1 OF 2 DATED 4-5-99

THIS DOCUMENT IS IN ACCORDANCE WITH ASME Y14.15-2009		DATE 3/2/2013
LINEAR MEASURE: INCH		DR BY FLP
UNLESS OTHERWISE SPECIFIED TOLERANCES ARE AS FOLLOWS:		SCALE FULL
ANGLES: $\pm .2$ $\pm .2$		CHK BY
2 PLACE DEC: $\pm .03$ $\pm .76$		
3 PLACE DEC: $\pm .015$ $\pm .38$		
ALL HOLES: $\pm .005$ $\pm .13$		

EBERHARD MANUFACTURING CO. DIVISION OF THE EASTERN COMPANY CLEVELAND, OHIO 44149-9712	
ADJUSTABLE TRIGGER LATCH - NON LOCKING	
MATERIAL -----	PART NUMBER 534-X

CUSTOMER PRINT SHEET 1 OF 2