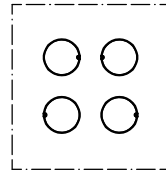
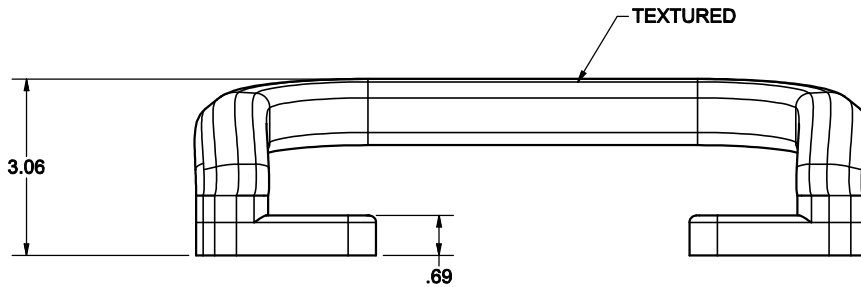
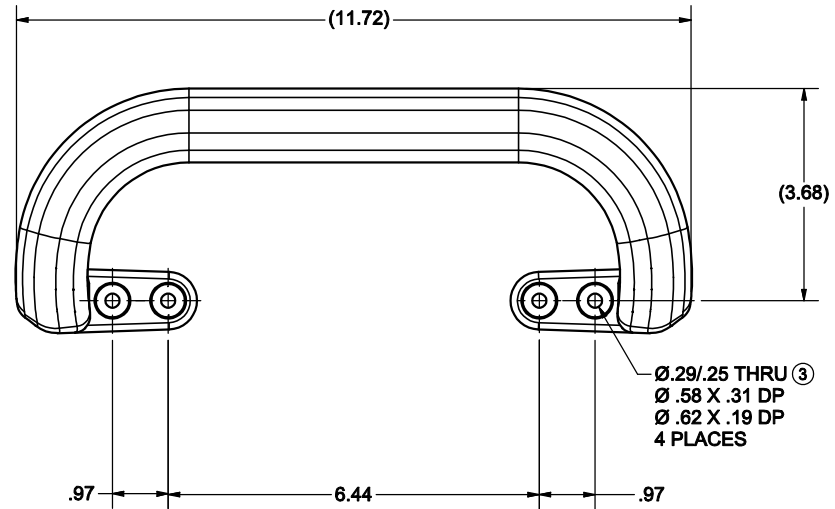


CONFIDENTIAL NOTICE: This drawing and the designs, specifications and engineering information disclosed herein are the property of Eberhard Manufacturing Company and are not to be disseminated or reproduced without express written consent. The drawing is loaned in confidence and then only for consideration of the matter disclosed herein. In accepting loan of this drawing, recipient agrees to keep it and the matter disclosed herein in confidence and not to use nor permit their use in any way detrimental to Eberhard Manufacturing Company, Division of the Eastern Company, 21944 Drake Road, Cleveland, Ohio 44149-9712 © 2016 EBERHARD MFG. CO.

REVISION HISTORY					
REV	DESCRIPTION	EN	DATE	REV. BY	APVD. BY
	RELEASE WAS 3326354	5752	5/13/2016	MAM	LSW
1	REVISED NOTE	5759	7/1/2016	FLP	MR
2	ADDED: FC (SY), REVISED NOTE	5773	10-7-16	FLP	MR
3	28/.25 DIA WAS .250	5810	07/07/2017	MAM	LSW
4	NOTE 4, ADD MEETS FMVSS 302	5831	12/6/2019	VRB	MR



(QTY 4)  
HOLE PLUG  
BAG



NOTES:

1. FINISHES:

- A. (MB) MATTE BLACK
- B. (SY) SAFETY YELLOW

② 2. MATERIAL: TPU FOAM OVER A 10mm ROD

① 3. TO ORDER 24 HANDLES IN A BOX ORDER NUMBER 4312-PK-BX24-MB OR 4312-PK-BX24-SY WHICH CONSISTS OF: 24 PIECES OF RUBBER GRAB HANDLE AND MATCHING COLOR FASTENER PLUG BAGS.

4. MINIMUM LOAD SPECIFICATION STATED IN 49 CFR 399.201-399.211

④ MEETS FMVSS 302

THIS DOCUMENT IS IN ACCORDANCE WITH ASME Y14.5-2009

LINEAR MEASURE: INCH		DATE
UNLESS OTHERWISE SPECIFIED		5/8/2016
TOLERANCES ARE AS FOLLOWS:		DRAY
	IN MM	mmlalloy
ANGLES:	± 2° ± 2°	SCALE
2 PLACE DEC.:	± .03 ± .76	*
3 PLACE DEC.:	± .015 ± .38	CHKBY
ALL HOLES:	± .005 ± .13	

**CUSTOMER PRINT**

EBERHARD MANUFACTURING CO.  
DIVISION OF  
THE EASTERN COMPANY  
CLEVELAND, OHIO 44149-9712

**12 INCH MOLDED GRAB  
HANDLE WITH PLUGS**

MATERIAL	PART NUMBER
	<b>4312-PK</b>