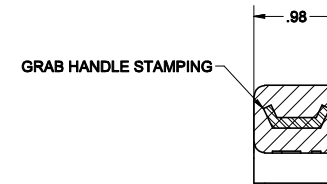
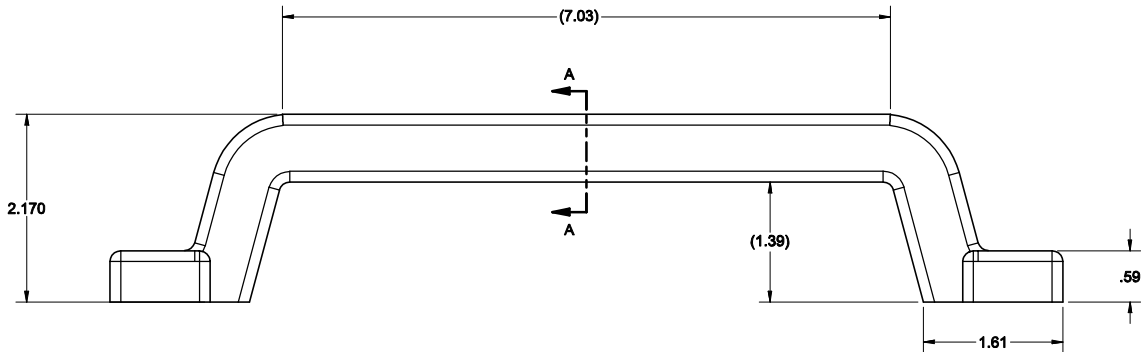
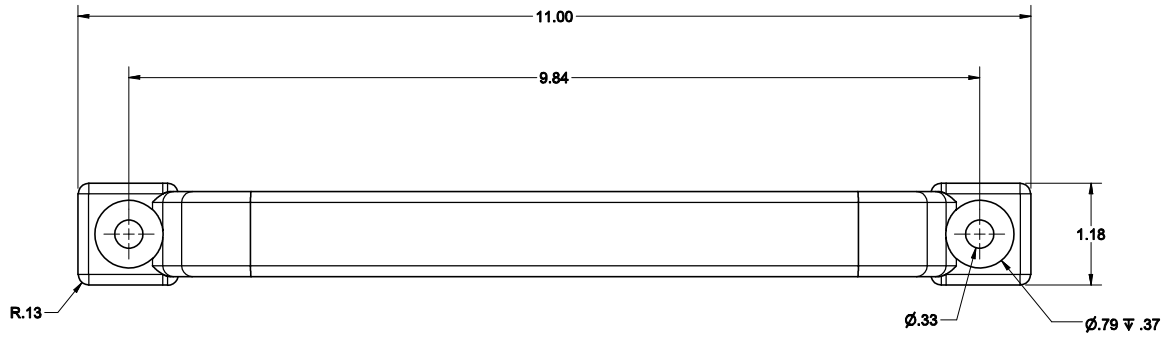
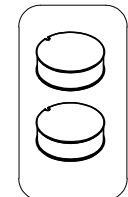


CONFIDENTIAL NOTICE: This drawing and the designs, specifications and engineering information disclosed hereon are the property of Eberhard Manufacturing Company and are not to be disseminated or reproduced without express written consent. The drawing is loaned in confidence and then only for consideration of the matter disclosed hereon. In accepting loan of this drawing, recipient agrees to keep it and the matter disclosed hereon in confidence and not to use nor permit their use in any way not intended by Eberhard Manufacturing Company, Division of The Eastern Company, 21944 Crosby Road, Cleveland, Ohio 44146-9712. © 2018 EBERHARD MFG. CO.

REVISION HISTORY					
REV	DESCRIPTION	EN	DATE	REV BY	APVD BY
	RELEASED	5431	12-4-09		
1	ADD NOTE 3	5752	5-13-2016		
2	ADDED VIEW, REMOVED VIEW, ADDED NOTES, REVISED NOTE, 4303/PK WAS 4303	5776	10-28-16	FLP	MR
3	ADDED NOTE FOR HOLE PLUG	5780	12/2/2016	KAB	MR
4	UPDATE NOTES 3, 5, AND 6	5831	12-6-2019	VRB	MR



SECTION A-A  
SCALE 1 : 1



② HOLE PLUG PACKAGE

- NOTES:
- ② 1. INTEGRAL TPU FOAM MOLDED AROUND STEEL CORE
  - 2. "UV" STABILIZED
  - 3. MEETS 250LB MINIMUM LOAD STRENGTH REQUIREMENT AS STATED IN 49 CFR 399.201-399.211
  - ⑤ ⑥ MEETS FMVSS 302
  - ② 4. FINISHES:
    - A. (MB) MATTE BLACK
    - B. (SY) SAFETY YELLOW
  - ⑤ ③ 5. INSTALLATION NOTE: HOLE PLUGS TO BE USED WITH A BUTTON HEAD FASTNER IN ORDER TO BE FLUSH WHEN INSTALLED.
  - ⑤ ② 6. KIT P/N's WITH PLUGS:
    - ORDER 4303-PK-MB FOR BLACK HANDLE AND HOLE PLUGS.
    - ORDER 4303-PK-SY FOR YELLOW HANDLE AND HOLE PLUGS.

CUSTOMER PRINT  
SHEET 1 OF 2

EBERHARD MANUFACTURING CO.  
DIVISION OF  
THE EASTERN COMPANY  
CLEVELAND, OHIO 44146-9712

UNLESS OTHERWISE SPECIFIED TOLERANCES ARE AS FOLLOWS:	DATE	12/2/2009	NAME	MATERIAL	PART NUMBER
	ANGLE:	±2			
2 PLACE DEC:	±.03	SCALE	FULL	SEE NOTE	4303 / PK ②
3 PLACE DEC:	±.015	CHECK			
ALL HOLES:	±.009				