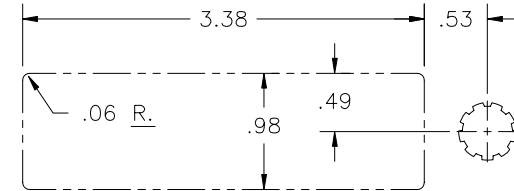
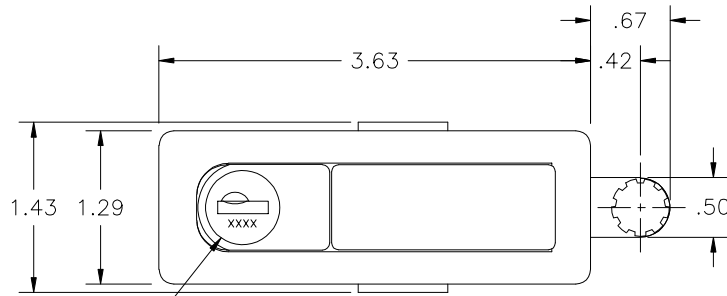


4-636S-751KSH1 **CONFIDENTIAL NOTICE:** This drawing and the designs, specifications and engineering information disclosed hereon are the property of Eberhard Manufacturing Company and are not to be disseminated or reproduced without express written consent. The drawing is loaned in confidence and then only for consideration of the matter disclosed hereon. In accepting loan of this drawing, recipient agrees to keep it and the matter disclosed hereon in confidence and not to use nor permit their use in any way detrimental to Eberhard Manufacturing Company, Division of the Eastern Company, 21944 Drake Road, Cleveland, Ohio 44149-9712 © 2012 EBERHARD MFG. CO.

NO	CHANGE	ENG.NO.	DATE
	RELEASED ON PP 10367	EN 5552	5-4-12
1	3.33 WAS 3.35	EN 5563	7-20-12
2	ADDED 4-634-12 AND 4-634-11 INSTALLED	EN 5576	10-19-12

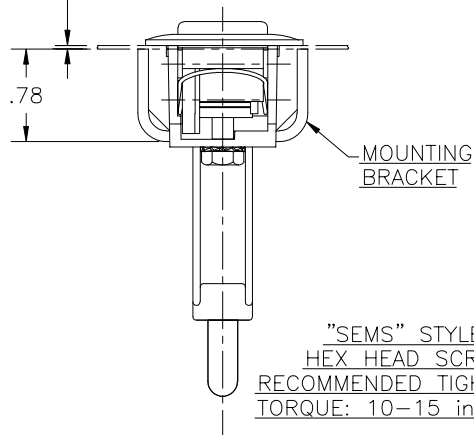
PART No.	SURFACE APPEARANCE	AVAILABLE FINISHES	HARDWARE FINISH
4-636S-751K	SMOOTH	(42)	(64)



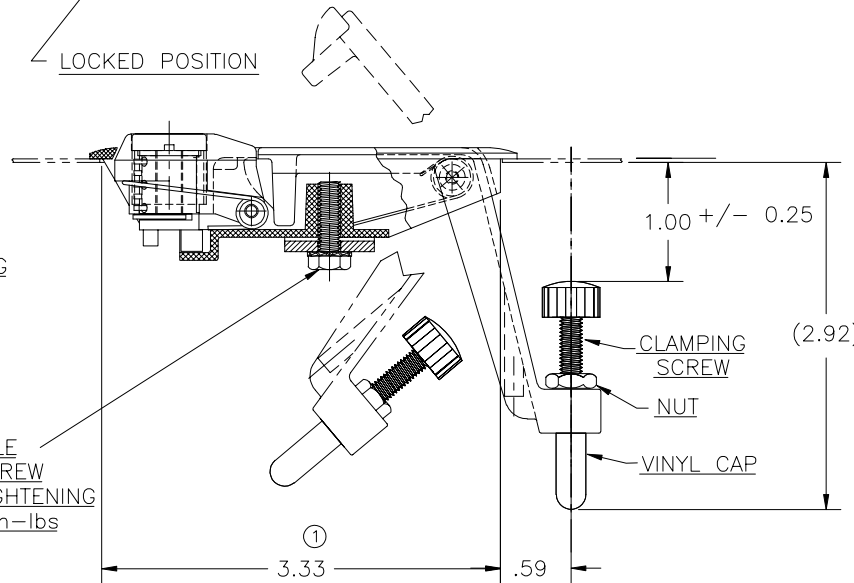
SUGGESTED OUTLINE OF CUTOUT

PANEL RANGE
.031 MIN./ .312 MAX

LOCKED POSITION



"SEMS" STYLE
HEX HEAD SCREW
RECOMMENDED TIGHTENING
TORQUE: 10-15 in-lbs



FINISHES DESCRIPTION:
(42) - TEXTURED BLACK POWDER
(64) - ZINC W/YELLOW CHROMATE

CUSTOMER PRINT
SHEET 1 OF 2

NOTE: SEMS STYLE SCREW AND MOUNTING BRACKET TO BE SHIPPED LOOSE IN A SECURED POLY BAG INSIDE THE LARGER POLY BAG TO PREVENT SCRATCHING

UNLESS OTHERWISE SPECIFIED TOLERANCES ARE AS FOLLOWS:	DATE 5-4-12
ANGLES: ±2°	DR BY DJG
2 PLACE DEC.: ±.03	SCALE 1:1
3 PLACE DEC.: ±.015	CHK BY
ALL HOLES: ±.005	

EBERHARD MANUFACTURING CO. DIVISION OF THE EASTERN COMPANY CLEVELAND, OHIO 44149-9712	
NAME	KEY LOCKING ADJUSTABLE TRIGGER LATCH W/ BRACKET
MATERIAL	*
PART NUMBER	4-636S-751K