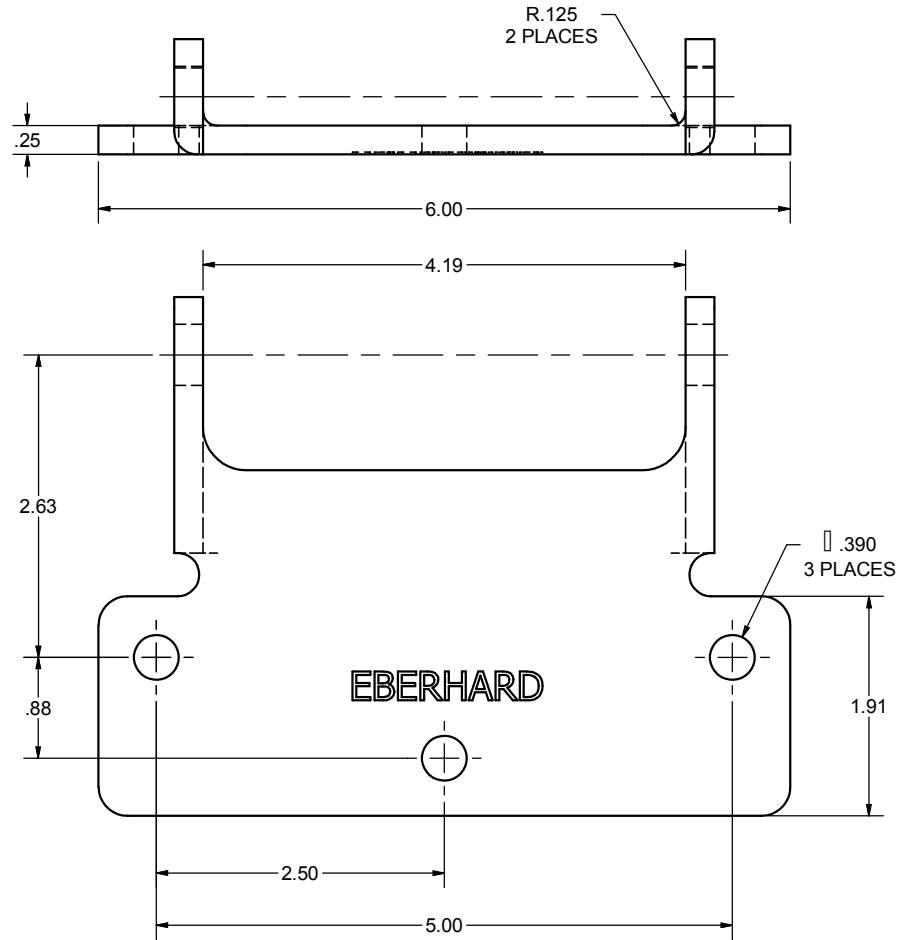
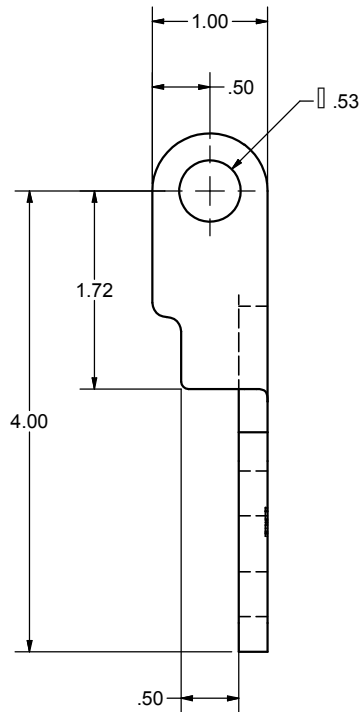


CONFIDENTIAL NOTICE: This drawing and the designs, specifications and engineering information disclosed hereon are the property of Eberhard Manufacturing Company and are not to be disseminated or reproduced without express written consent. The drawing is loaned in confidence and then only for consideration of the matter disclosed hereon. In accepting loan of this drawing, recipient agrees to keep it and the matter disclosed hereon in confidence and not to use nor permit their use in any way detrimental to Eberhard Manufacturing Company, Division of the Eastern Company, 21944 Drake Road, Cleveland, Ohio 44149-9712 © 2012 EBERHARD MFG. CO.

REVISION HISTORY			
REV	DESCRIPTION	EN	DATE
	CONVERTED TO 3D	5553	5-11-12



NOTE: FINISH - TCI POWDER COATINGS, #9900-9003 WHITE POLYESTER (FC PW) OR EQUIVALENT.

SUPERSEDES DRAWING 30-5897-1 SH1 DATED 2-12-98.

CUSTOMER PRINT SHEET 1 OF 2

EBERHARD MANUFACTURING CO.  
DIVISION OF  
THE EASTERN COMPANY  
CLEVELAND, OHIO 44149-9712

THIS DOCUMENT IS IN ACCORDANCE WITH		DATE
ASME Y14.15-2009		5/11/2012
LINEAR MEASUREMENTS:		BY: BJB
UNLESS OTHERWISE SPECIFIED TOLERANCES ARE AS FOLLOWS:		FLP
ANGLES:	0° 0' 0" / 0° 0' 0"	SCALE
2 PLACE DEC.:	0 .03 / 0 .76	FULL
3 PLACE DEC.:	0 .015 / 0 .38	CHK. BY
ALL HOLE:	0 .015 / 0 .38	

NAME	
HINGE BUTT	
MATERIAL	PART NUMBER
H.S.L.A. STEEL	30-5897-1