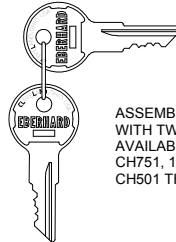
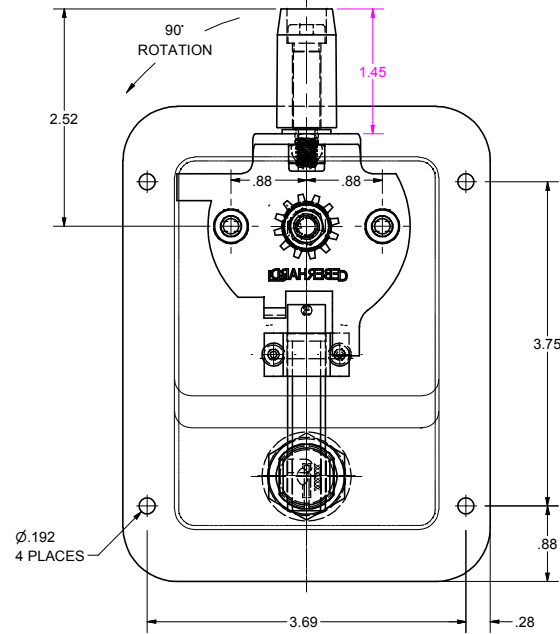
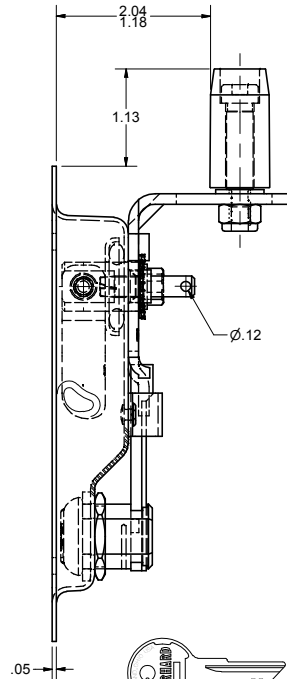
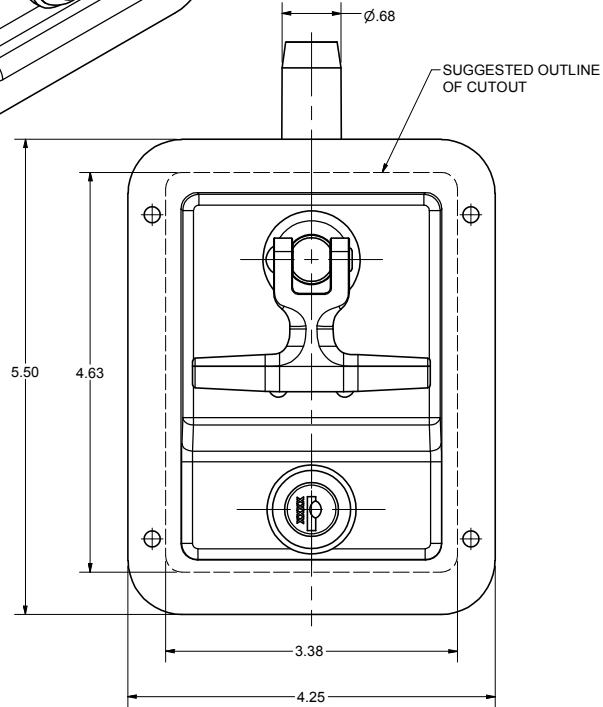
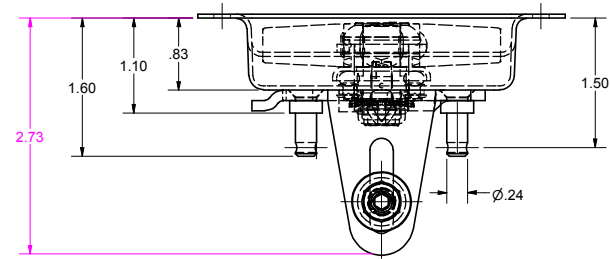
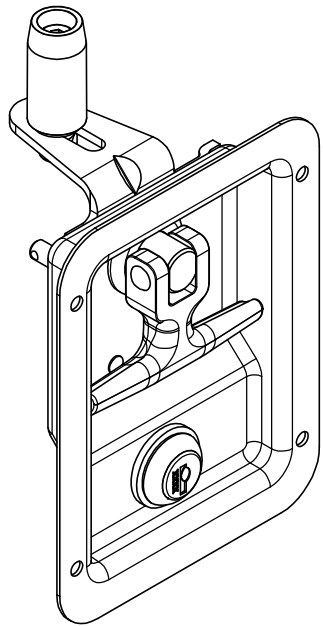


CONFIDENTIAL NOTICE: This drawing and the designs, specifications and engineering information disclosed hereon are the property of Eberhard Manufacturing Company and are not to be disseminated or reproduced without express written consent. The drawing is loaned in confidence and then only for consideration of the matter disclosed hereon. In accepting loan of this drawing, recipient agrees to keep it and the matter disclosed hereon in confidence and not to use nor permit their use in any way whatsoever by Eberhard Manufacturing Company, Division of the Eastern Company, 2184 Drake Road, Cleveland, Ohio 44116-9712. © 2013 EBERHARD MFG. CO.

REVISION HISTORY			
REV	DESCRIPTION	EN	DATE
1	REVISED, REDRAWN AND CONVERTED TO 3D	5996	3-16-13



ASSEMBLY SUPPLIED WITH TWO KEYS
AVAILABLE KEY NO'S:
CH751, 1250,
CH501 THRU CH550

NOTE: AVAILABLE FINISHES:

- A. ZINC, FC (25)
- B. BRIGHT STAINLESS STEEL, FC (10)

THIS DOCUMENT IS IN ACCORDANCE WITH ASME Y14.19-2009	
LINEAR MEASUREMENTS	DATE: 3/15/2013
UNLESS OTHERWISE SPECIFIED TOLERANCES ARE AS FOLLOWS:	DRN: RLP
2 PLACE DEC: ± .03	SCALE: FULL
3 PLACE DEC: ± .015	CHECK: _____
ALL HOLES: ± .005	

EBERHARD MANUFACTURING CO.	
DIVISION OF THE EASTERN COMPANY CLEVELAND, OHIO 44146-9712	
NAME:	3 PT. ADJ. T-HANDLE CENTER CASE (KEY-LOCKING)
MATERIAL:	_____
PART NUMBER:	3-6905-50/50SS

SUPERSEDES: 003444C 1.000E 0A/0000 01/00 1.1 2.00

C:\TEMP\dep21c779-0a72-4d11-9179-6fa5a168051c\Pro\03-6905-50-50SS SH1.dwg