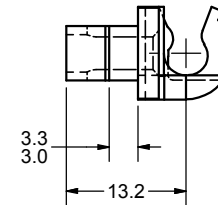
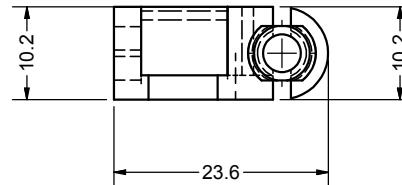
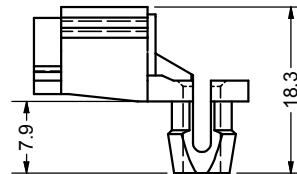


CONFIDENTIAL NOTICE: This drawing and the designs, specifications and engineering information disclosed hereon are the property of Eberhard Manufacturing Company and are not to be disseminated or reproduced without express written consent. The drawing is loaned in confidence and then only for consideration of the matter disclosed hereon. In accepting loan of this drawing, recipient agrees to keep it and the matter disclosed hereon in confidence and not to use nor permit their use in any way detrimental to Eberhard Manufacturing Company, Division of the Eastern Company, 21944 Drake Road, Cleveland, Ohio 44149-9712 © 2012 EBERHARD MFG. CO.

REVISION HISTORY			
REV	DESCRIPTION	EN	DATE
	RELEASE WAS M10669	5556	6/1/2012
1	MODIFIED DIMENSIONS WAS 7.1 TO 6.0, WAS 14.7 TO 15.5, WAS 2.8 TO 3.1, WAS 1.4 TO 1.7. MODIFIED NOTE FOR MATERIAL ADDED ZYTEL 101 OR EQUIV.	5587	01/18/2013
2	REMOVED VIEWS AND DIMENSIONS	5607	06/07/2013

NOTES:

- 1.) THIS PART SHALL CONFORM TO CURRENT FMVSS302, FLAMMABILITY OF INTERIOR MATERIALS.
- 2.) MATERIAL: ZYTEL 103FHS BKB038(BLACK COLOR), ZYTEL 101, OR EQUIV.
- ① 3.) FINISH: (MB) BLACK COLOR
- 4.) RECOMMENDED HOLE SIZE: 6.75 ±0.05mm.
- 5.) FOR USE WITH Ø3.97mm ROD.



CUSTOMER PRINT
SHEET 1 OF 2

EBERHARD MANUFACTURING CO.
DIVISION OF
THE EASTERN COMPANY
CLEVELAND, OHIO 44149-9712

THIS DOCUMENT IS IN ACCORDANCE WITH	
LINEAR MEASURE: <u>MM</u>	DATE: <u>6/1/2012</u>
UNLESS OTHERWISE SPECIFIED TOLERANCES ARE AS FOLLOWS:	
ANGLES: <u>0.0</u> <u>0.0</u>	BY: <u>gbolger</u>
2 PLACE DEC.: <u>0.03</u> <u>0.76</u>	SCALE: <u>.</u>
3 PLACE DEC.: <u>0.015</u> <u>0.38</u>	CHK. BY:
ALL HOLES: <u>0.015</u> <u>0.38</u>	

NAME: ROD RETAINER CLIP	
MATERIAL: SEE NOTE	PART NUMBER: 299712 SH1

C:\Working_Folder\Archive\FAS\TENER\CLIPS\ROD\299712 SH1.idw