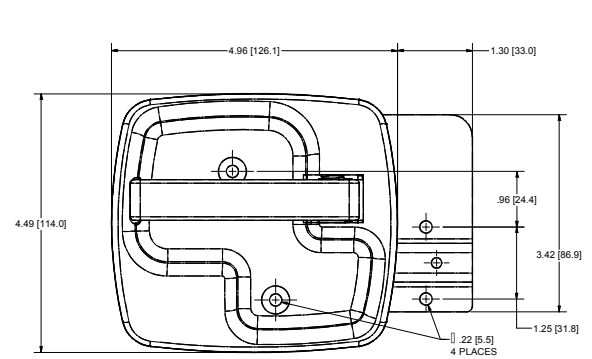
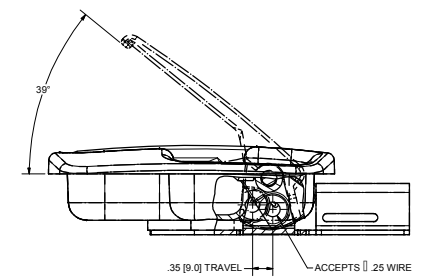
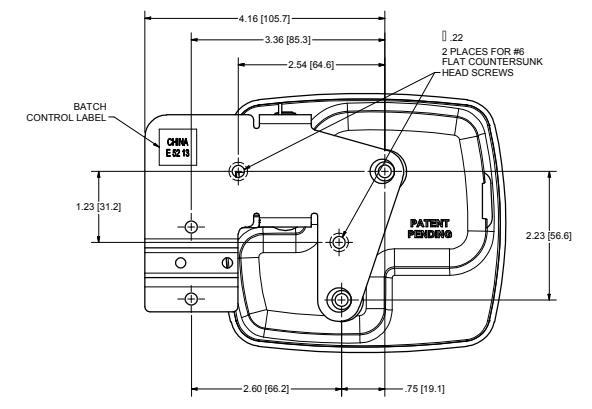
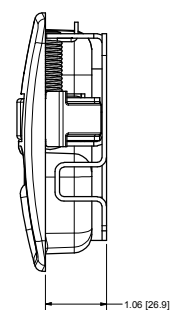


CONFIDENTIAL NOTICE: This drawing and the design, identification and engineering information disclosed therein are the property of Eberhard Manufacturing Company and are not to be disseminated or reproduced without express written consent. The drawing is issued in confidence and may only be used for the purposes of the order. Eberhard Manufacturing Company is not responsible for any reproduction of this drawing without its express written consent. Eberhard Manufacturing Company reserves the right to change design, specifications, dimensions, materials, quantities, etc., without notice and without liability. © 2012 EBERHARD MFG. CO.

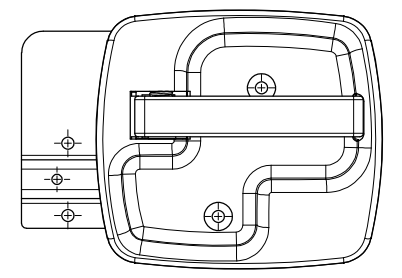
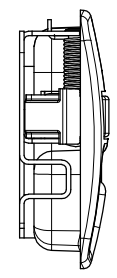
REVISION HISTORY				
REV.	DESCRIPTION	EN	DATE	REV. BY
1	REVISED AND REDRAWN, CONVERTED TO 3D	EN 5633	12/13/2013	



SHOWN ASSEMBLED FOR REFERENCE

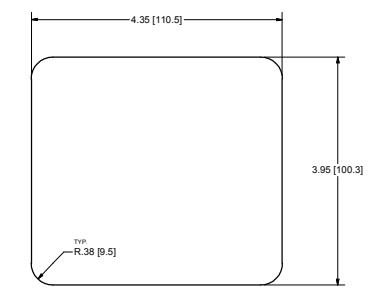
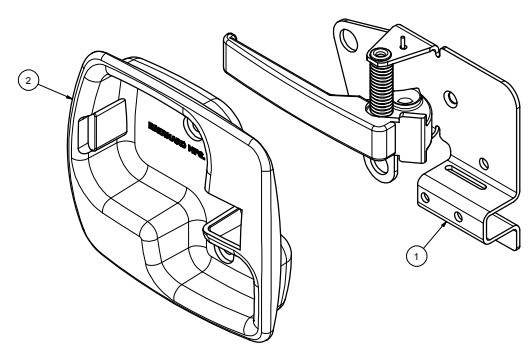


NOTES:
 1) AVAILABLE FINISHES:
 A) BLACK POWDER (TEXTURED), FC (42)
 B) CHROME HANDLE & BLACK POWDER (TEXTURED) RECEPTACLE, FC (35)
 C) CHROME, FC (04)
 2) PARTS ARE TO BE PACKAGED IN A SECURE POLY BAG.



21000-PKNR
 INSIDE HANDLE, NON LOCKING
 RIGHT HAND
 SCALE: HALF

ITEM	QTY	DESCRIPTION
1	1	NON LOCKING INSIDE HANDLE SUB-ASSEMBLY
2	1	RECEPTACLE, NON-LOCKING



SUGGESTED OUTLINE
 OF CUTOUT

CUSTOMER PRINT
 SHEET 1 OF 2
 LEFT HAND (CURB SIDE)
 SHOWN
 RIGHT HAND (ROAD SIDE)
 OPPOSITE

EXPERIMENTAL USE ONLY
 PRODUCTION TOOLING OR COMPONENT PARTS

EBERHARD MANUFACTURING CO.
 DIVISION OF
 THE EASTERN COMPANY
 CLEVELAND, OHIO 44116-9712

INSIDE HANDLE, NON-LOCKING
 PART NUMBER: 21000-PKNR/L