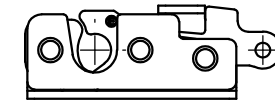
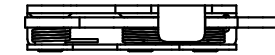


CONFIDENTIAL NOTICE: This drawing and the designs, specifications and engineering information disclosed herein are the property of Eberhard Manufacturing Company and are not to be disseminated or reproduced without express written consent. The drawing is loaned in confidence and then only for consideration of the matter disclosed herein. In accepting loan of this drawing, recipient agrees to keep it and the matter disclosed herein in confidence and not to use nor permit their use in any way detrimental to Eberhard Manufacturing Company, Division of the Eastern Company, 21944 Drake Road, Cleveland, Ohio 44149-9712 © 2020 EBERHARD MFG. CO.

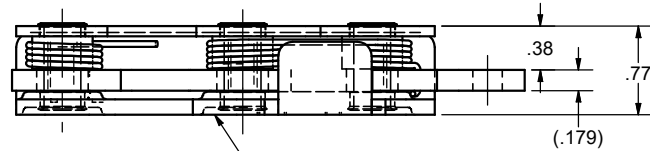
REVISION HISTORY					
REV	DESCRIPTION	EN	DATE	REV BY	APVD BY
	RELEASE TO PRODUCTION PER PP131446-B	5949	5/1/2020	KAB	MR
1	ADDED TO STAINLESS COMPONENT NOTE "300 SERIES"	5950	5/8/2020	KAB	MR



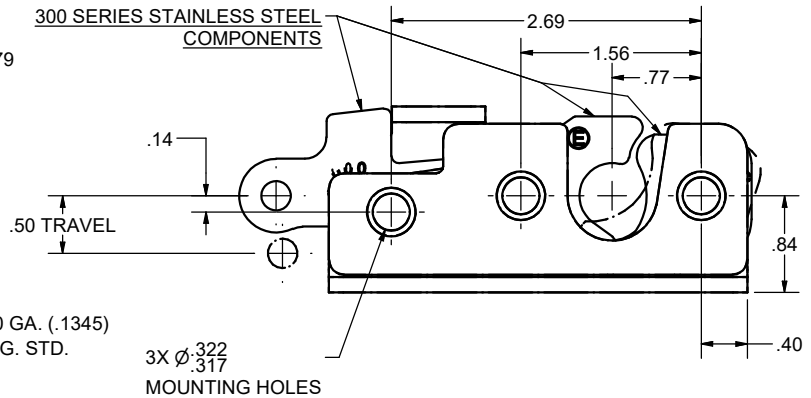
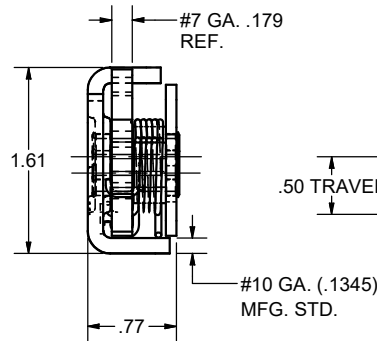
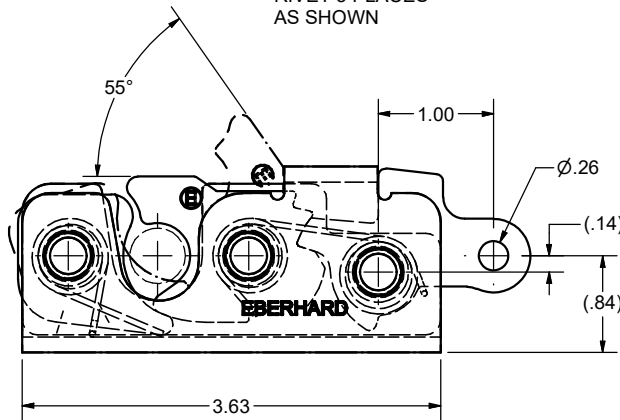
- NOTES:**
- 1) MATERIAL: ALL COMPONENTS CARBON STEEL EXCEPT WHERE STAINLESS STEEL AS NOTED.
 - 2) EBERHARD FINISH:
 - (23) E-COAT WITH (22) PASSIVATED INTERNAL COMPONENTS.
 - (24) ELECTROPLATED ZINC W/SEALER WITH (22) PASSIVATED INTERNAL COMPONENTS.
 - (BG) BEARING GREASE WITH (22) PASSIVATED INTERNAL COMPONENTS, (24) FRONT AND BACK PLATES.



LEFT HAND SCALE: HALF



RIVET 3 PLACES AS SHOWN



CUSTOMER PRINT SHEET 1 OF 2
RIGHT HAND SHOWN
LEFT HAND OPPOSITE

- NOTE:**
1. USE .312 DIA. GRADE 8 BOLTS FOR INSTALLATION.
 2. RECOMMENDED TORQUE FOR TIGHTENING: 130+/-10 IN. LBS.

UNLESS OTHERWISE SPECIFIED TOLERANCES ARE AS FOLLOWS:	
ANGLES:	± 2'
2 PLACE DEC.:	± .03
3 PLACE DEC.:	± .015
ALL HOLES:	± .005

DATE	5/1/2020
DR BY	K.BRAUN
SCALE	FULL
CHK BY	

EBERHARD MANUFACTURING CO. DIVISION OF THE EASTERN COMPANY CLEVELAND, OHIO 44149-9712	
ROTARY LOCK ASSEMBLY	
MATERIAL	PART NUMBER
-----	20X-17400-SSRL