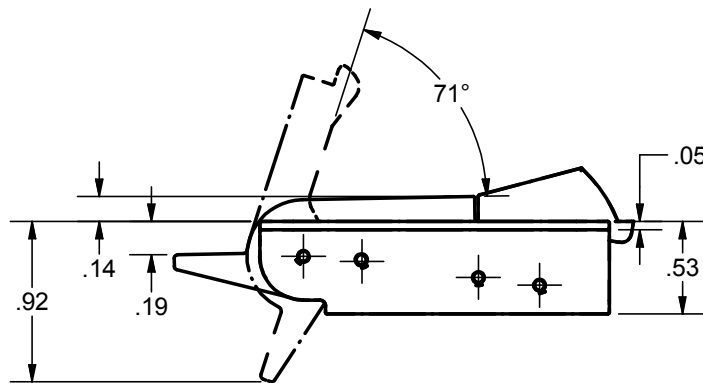
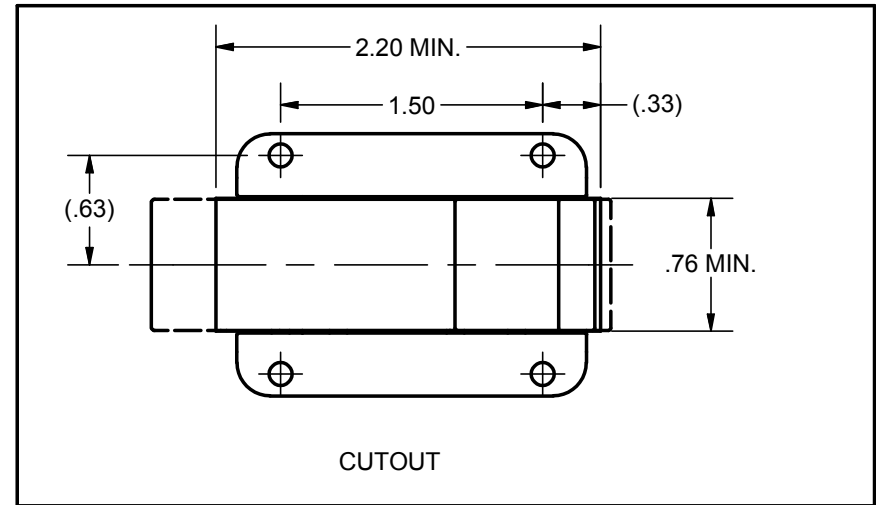
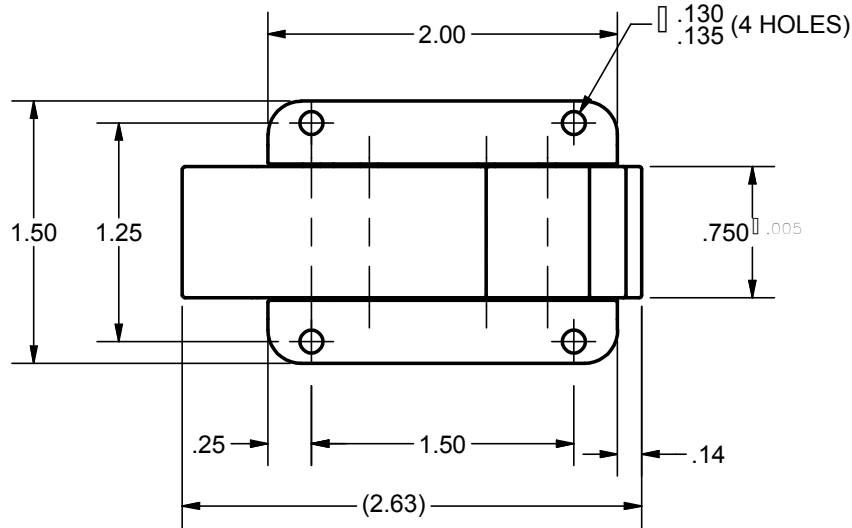


CONFIDENTIAL NOTICE: This drawing and the designs, specifications and engineering information disclosed herein are the property of Eberhard Manufacturing Company and are not to be disseminated or reproduced without express written consent. The drawing is loaned in confidence and then only for consideration of the matter disclosed herein. In accepting loan of this drawing, recipient agrees to keep it and the matter disclosed herein in confidence and not to use nor permit their use in any way detrimental to Eberhard Manufacturing Company, Division of the Eastern Company, 21944 Drake Road, Cleveland, Ohio 44149-9712 © 2012 EBERHARD MFG. CO.



P/N	DESCRIPTION	APPROVED MATERIALS	FINIISH
2-433-5	CASE	CARBON STEEL	ZINC PLATE (26)
2-433-4	TRIGGER	1) DUPONT ZYTEL 813G33L NC010 (1) 2) DSM AKULON S223-PG6U	MATTE BLACK (MB)
433-3	BUTTON	1) DUPONT ZYTEL 813G33L NC010 (1) 2) DSM AKULON S223-PG6U	MATTE BLACK (MB)
433-6SS & 433-7SS	SPRINGS	STAINLESS STEEL	PLAIN (01)
433-2	ROLL PINS	CARBON STEEL	ZINC PLATE (26)

THIS PRODUCT IS ROHS COMPLIANT.

CUSTOMER PRINT
SHEET 1 OF 2

SUPERSEDES DRAWING 2-433 DATED 1-31-2012						LINEAR MEASURE: INCH		DATE 2/17/2012		EBERHARD MANUFACTURING CO.		NAME FLUSH MOUNTED PUSH BUTTON LATCH	
UNLESS OTHERWISE SPECIFIED TOLERANCES ARE AS FOLLOWS:						DR. BY DJG		THE EASTERN COMPANY CLEVELAND, OHIO 44149-9712		MATERIAL		PART NUMBER	
ANGLES: 0 20 0 20						SCALE FULL		THIS DOCUMENT IS IN ACCORDANCE WITH ASME Y14.15-2009		-----		2-433	
2 PLACE DEC.: 0 .03 0 .76						CHK. BY							
3 PLACE DEC.: 0 .015 0 .38													
ALL HOLES: 0 .005 0 .13													
REV	DESCRIPTION	EN	REV. BY	APVD. BY	DATE								
1	CHANGE MATERIAL	5724	VRB	MR	10/9/2015								
	REVISED AND REDRAWN	5541			2/17/2012								

C:\Working_Folder\Archive\Pro\414332-433 SH1.idw