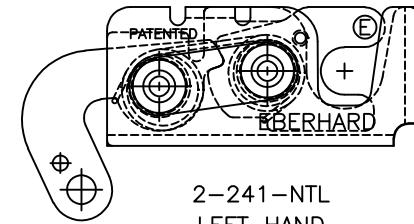
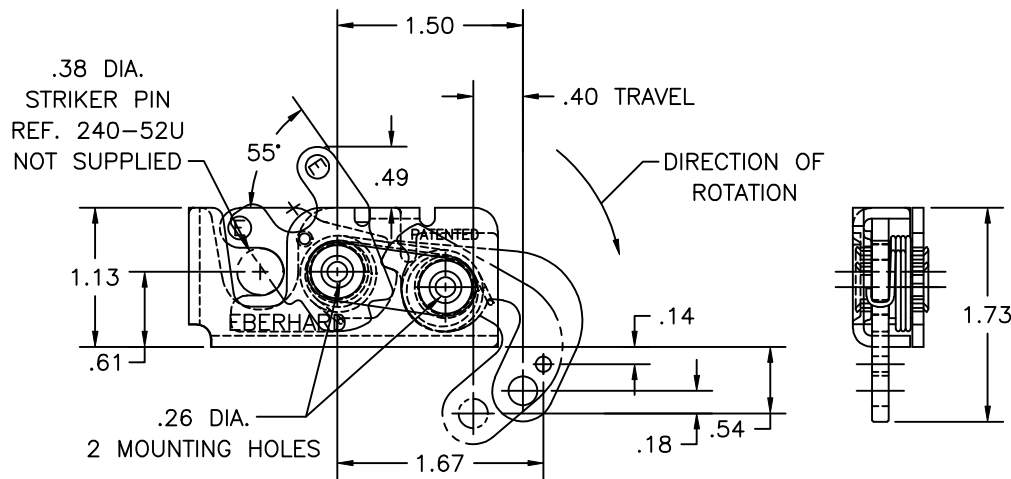
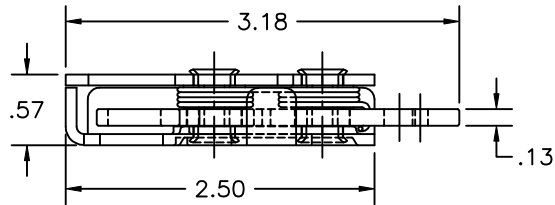
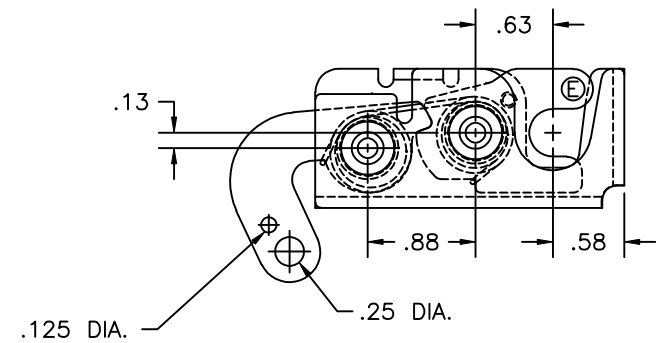


CONFIDENTIAL NOTICE: This drawing and the designs, specifications and engineering information disclosed hereon are the property of Eberhard Manufacturing Company and are not to be disseminated or reproduced without express written consent. The drawing is loaned in confidence and then only for consideration of the matter disclosed hereon. In accepting loan of this drawing, recipient agrees to keep it and the matter disclosed hereon in confidence and not to use nor permit their use in any way detrimental to Eberhard Manufacturing Company, Division of the Eastern Company. 21944 Drake Road, Cleveland, Ohio 44149-9712 © 2009 EBERHARD MFG. CO.

NO	CHANGE	ENG. NO.	DATE
	RELEASED, WAS M9579	EN 5421	9-25-09



2-241-NTL
LEFT HAND
MINI-ROTARY™ LOCK



NOTES:

- 1.) USE 1/4-20 GRADE 8 BOLTS FOR INSTALLATION. RECOMMENDED TORQUE FOR TIGHTENING: 14 FT./LBS.
- 2.) MAX LOAD RATING - 750 LBS

PATENTED
CUSTOMER PRINT
SHEET 1 OF 2
RIGHT HAND SHOWN
LEFT HAND OPPOSITE



MINI-ROTARY™ IS A TRADEMARK OF EBERHARD MFG. CO., DIVISION OF THE EASTERN COMPANY.

- FINISH: (54) EVERLUBE INTERNAL COMPONENTS
(BG) BEARING GREASE WITH EVERLUBE INTERNAL COMPONENTS.
(23) E-COAT WITH EVERLUBE INTERNAL COMPONENTS.

UNLESS OTHERWISE SPECIFIED TOLERANCES ARE AS FOLLOWS:

ANGLES:	±2°
2 PLACE DEC.:	±.03
3 PLACE DEC.:	±.015
ALL HOLES:	±.005

DATE	9-22-09
DR. BY	JMM
SCALE	1:1
CHK. BY	

NAME	
SINGLE STAGE MINI-ROTARY™ LOCK	
MATERIAL	PART NUMBER
-----	2-241-NTR/L

EBERHARD MANUFACTURING CO.
DIVISION OF
THE EASTERN COMPANY
CLEVELAND, OHIO 44149-9712