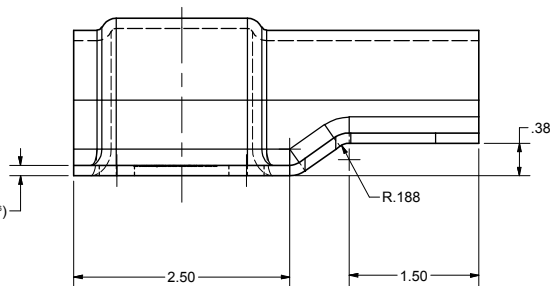
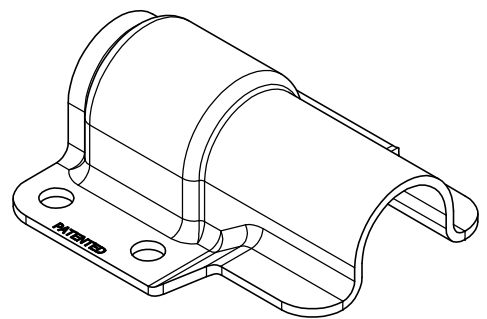
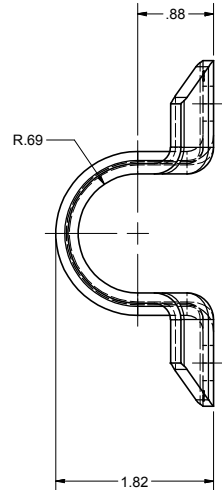
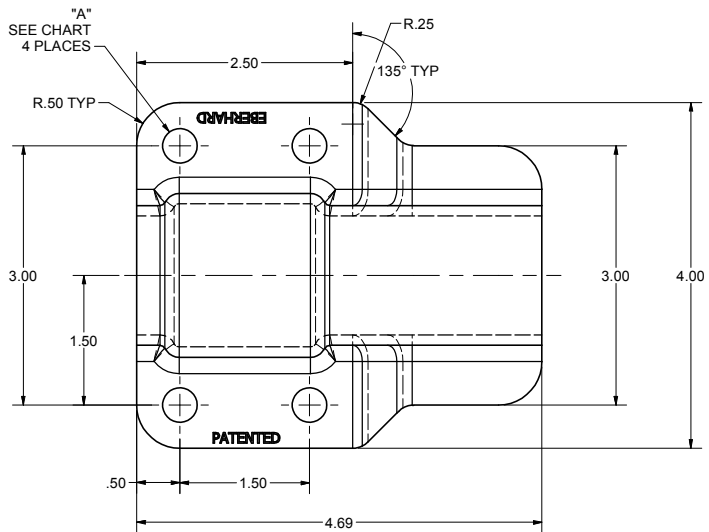


CONFIDENTIAL NOTICE: This drawing and the designs, specifications and engineering information disclosed hereon are the property of Eberhard Manufacturing Company and are not to be disseminated or reproduced without express written consent. The drawing is loaned in confidence and then only for consideration of the matter disclosed hereon. In accepting loan of this drawing, recipient agrees to keep it and the matter disclosed hereon in confidence and not to use nor permit their use in any way detrimental to Eberhard Manufacturing Company, Division of the Eastern Company, 21844 Drake Road, Cleveland, Ohio 44148-9712, © 2015 EBERHARD MFG. CO.

REVISION HISTORY					
REV	DESCRIPTION	EN	DATE	REV BY	APVD BY
1	CONVERTED TO 3D	5702	5-8-15	FLP	MR



#11 GA. (.1196 ± .005)
MFG. STD.

BEARING COVER		
PART NUMBER	"A" DIM.	FINISH
1979-10	.406	(13) (30)
4-1979-10	.257	(13) (30)

CUSTOMER PRINT
SHEET 1 OF 2

EBERHARD MANUFACTURING CO.
DIVISION OF
THE EASTERN COMPANY
CLEVELAND, OHIO 44148-9712

**EXTENDED BEARING COVER WITH
FOUR MOUNTING HOLES**

MATERIAL: H.R.P. & O. DRAW
QUALITY STEEL

PART NUMBER: 1979-10

THIS DOCUMENT IS IN ACCORDANCE WITH ASME Y14.15-2009		DATE 5/8/2015	NAME FLP
UNLESS OTHERWISE SPECIFIED TOLERANCES ARE AS FOLLOWS:		DATE 5/8/2015	DR BY FLP
LINEAR MEASURE: INCH		SCALE FULL	CHK BY
ANGLES: 1/20 1/20			
2 PLACE DEC.: 1/100 1/100			
3 PLACE DEC.: 1/1000 1/1000			
ALL HOLES: 1/1000 1/1000			

SUPERSEDES DRAWING 1979-10 CHART SHEET 1 OF 2 DATED 10-11-96

C:\Working_Folder\Archive\Proj\1979\1979-10 SH1.dwg