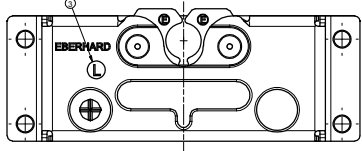


CONFIDENTIAL NOTICE: This drawing and the design identification and engineering information disclosed herein are the property of Eberhard Manufacturing Company and are not to be disseminated or otherwise used without written consent. The drawing is issued in confidence and may be controlled by the master database system. In accordance with this drawing, no other copies are to be made and the master database system is to be maintained and not to be used for any other purpose. Eberhard Manufacturing Company, Division of The Eastern Company, Cleveland, Ohio 44115-2000. © 2012 EBERHARD MFG. CO.

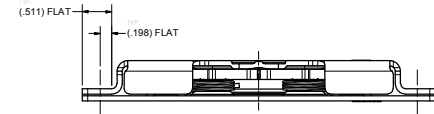
REVISION HISTORY				
REV	DESCRIPTION	EN	DATE	APVD. BY
1	RELEASED AS MTRHARL SHEET 1 OF 2	EN 5555	5/26/2012	
1	ORBITAL RIVETED SPACERS WAS CROSS STAKED	EN 5551	5/15/2013	
2	REVISED DIMENSION	EN 5634	12/20/2013	SAK
3	ADDED LEFT/RIGHT IDENTIFICATION LABEL	EN 5741	2/26/2016	KAB MR



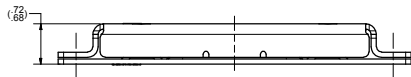
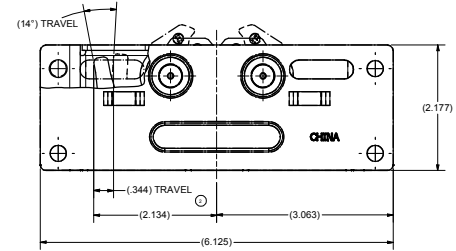
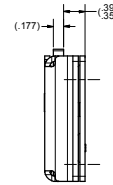
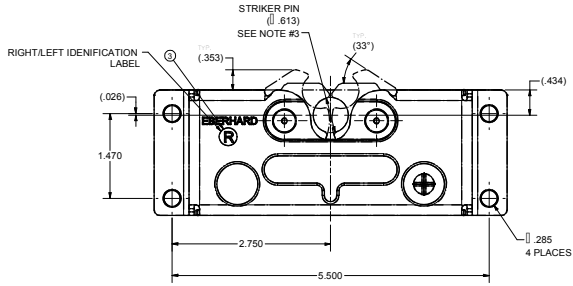
19420-L
DOUBLE LATCH
ROTARY LOCK ASSEMBLY
LEFT HAND



- NOTES:
- 1) THIS ROTARY LOCK ASSEMBLY MEETS ALL REQUIREMENTS FOR FMVSS 206 SAFETY STANDARD WHEN MOUNTED WITH (4) 1/4-20 UNC-2A BUTTON HEAD BOLTS, GRADE 9 OR M6 BUTTON HEAD CLASS 10.9 BOLTS.
 - 2) RECOMMENDED TORQUE FOR TIGHTENING: 130 ± 10 in./lbs.
 - 3) ROTARY TO BE USED WITH EBERHARD COMPLIANT FMVSS 206 STRIKER PIN PIN T-19400-52-85.
 - 4) FINISH: (R) BEARING GREASE WITH ZINC PLATED INTERNAL COMPONENTS.



A ↑

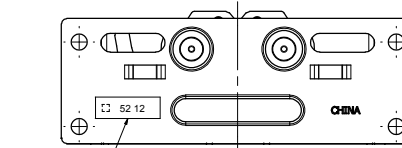


PERFORMANCE NOTE:



STRIKER TO BE IN THIS ORIENTATION AFTER INSTALLATION (STRIKER SOLD SEPARATELY) SEE NOTE #3

ROTARY AND STRIKER WITH SLEEVE BODY SHOWN



BATCH CONTROL LABEL
VIEW A-A
SCALE 1:1



CUSTOMER PRINT
SHEET 1 OF 2
RIGHT HAND SHOWN
LEFT HAND OPPOSITE

EBERHARD MANUFACTURING CO.
DIVISION OF
THE EASTERN COMPANY
CLEVELAND, OHIO 44115-2012

THIS DOCUMENT IS TO BE CONSIDERED VOID IF ANY OF THE FOLLOWING ARE FOUND:		FORM	
DATE OF THE ISSUE SPECIFIED	DATE	5/26/12	
TOLERANCES ARE AS FOLLOWS:		SAK	
ANGLES	FR	FR	
PLACES DEC.	FR	FR	
PLACES DEC.	FR	FR	
ALL HOLES	FR	FR	

DUAL LATCH ROTARY LOCK ASSEMBLY
PART NUMBER: 19420-RL

C:\working_folder\mfg\mfr\19420\19420\19420-RL_SHT1.dwg