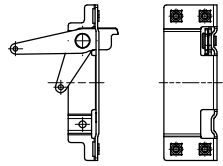
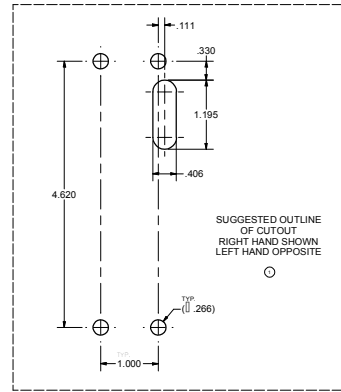
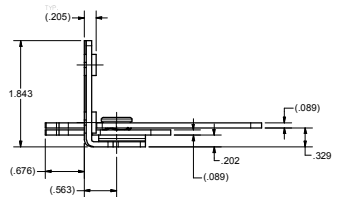
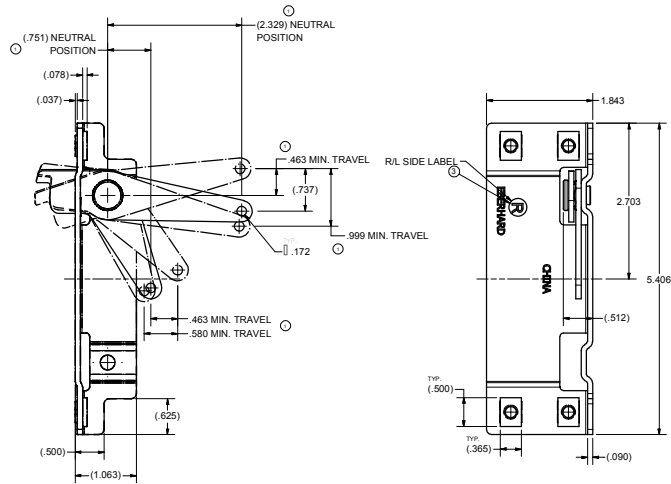
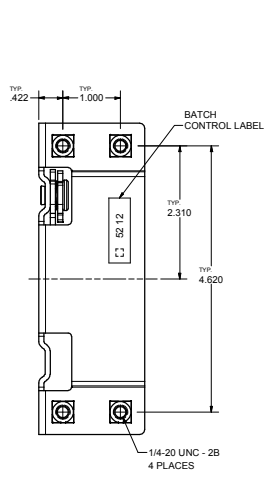


CONFIDENTIAL NOTICE: This drawing and the design, identification and nomenclature thereon disclosed herein are the property of Eberhard Manufacturing Company and are not to be disseminated or reproduced without express written consent. The drawing is issued in confidence and the user is authorized to use the drawing for the purpose of manufacturing the product shown hereon. It is the user's responsibility to ensure that the drawing is used for the intended purpose and not to be used for any other purpose. Eberhard Manufacturing Company reserves the right to change the design, identification and nomenclature of this drawing without notice and without liability.



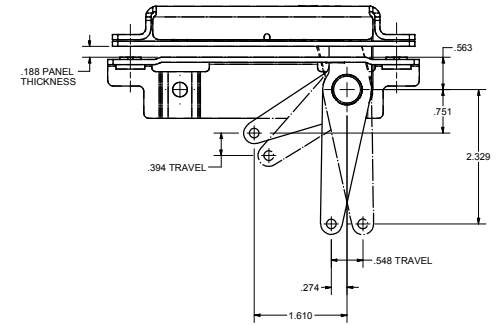
19411-L
DUAL ACTUATOR LEVER &
MOUNTING PLATE SUB-ASSEMBLY
LEFT HAND
SCALE: HALF

- NOTES:
 1) USE (4) 1/4-20 UNC-2A GRADE 8 FASTENERS FOR INSTALLATION.
 2) RECOMMENDED TORQUE FOR TIGHTENING: 130 \pm 10 in./lbs.
 3) REFERENCE: DUAL ACTUATOR LEVER & MOUNTING PLATE SUB-ASSEMBLY TO BE USED WITH EBERHARD COMPLIANT FMVSS 206 DUAL LATCH ROTARY LOCK ASSEMBLY P/N 19410-RL-BG.
 4) FINISH: (65) ZINC W/YELLOW CONVERTER (.0005).



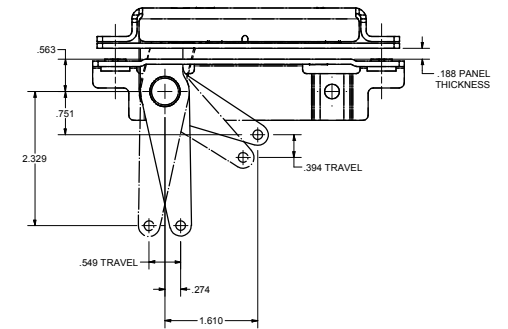
REVISION HISTORY					
REV	DESCRIPTION	EN	DATE	REV BY	APVD BY
1	RELEASED WAS 15-NITRO-STR SHEET 1 OF 2	EN 5874	10/26/12		
1	REVISED DIMENSIONS, ADDSD VIEW	EN 5883	12/15/13		
2	REVISED PART NUMBERS	EN 5891	2/15/2013		
3	ADDED LABEL TO SHOW RIGHT/LEFT PART	EN 6141	2/28/2016	KAB	MC

19410-R DUAL LATCH ROTARY LOCK ASSEMBLY &
 19411-R DUAL ACTUATOR LEVER & MOUNTING PLATE SUB-ASSEMBLY



ACTUATOR LEVER RELEASE TRAVEL

19410-L DUAL LATCH ROTARY LOCK ASSEMBLY &
 19411-L DUAL ACTUATOR LEVER & MOUNTING PLATE SUB-ASSEMBLY



ACTUATOR LEVER RELEASE TRAVEL

CUSTOMER PRINT
 SHEET 1 OF 2
 RIGHT HAND SHOWN
 LEFT HAND OPPOSITE

THIS DOCUMENT IS IN CONFORMANCE WITH ASME Y14.1-2002		UNLESS OTHERWISE SPECIFIED	
ANGLE:	1/8	1/16	SAK
SPACE DEC:	1/32	1/16	ENL
SPACE DEC:	1/64	1/32	ENL
ALL DIMS:	1/64	1/32	ENL

EBERHARD MANUFACTURING CO.
 DIVISION OF
 THE EBERHARD COMPANY
 CLEVELAND, OHIO 44116-9712

PART NUMBER: 19411-RL

C:\Working_Folder\WorkingPart\19000\1900019411\19411-RL-BH1.dwg