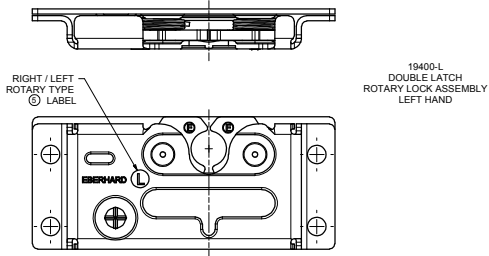


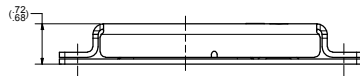
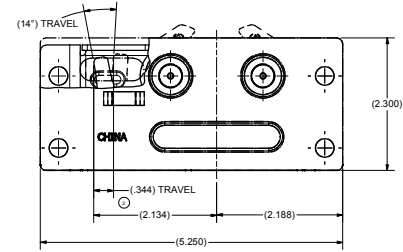
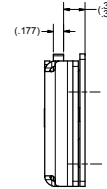
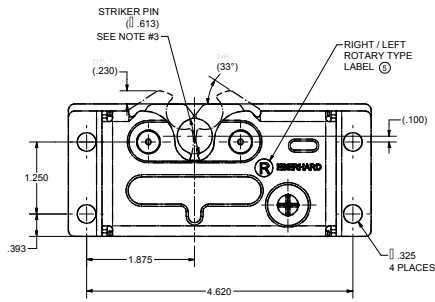
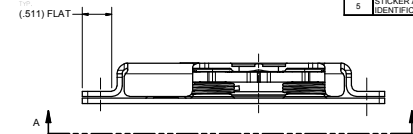
CONFIDENTIAL NOTICE: This drawing and the design specifications and engineering information disclosed herein are the property of Eberhard Manufacturing Company and are not to be disseminated or reproduced without express written consent. The drawing is issued in confidence and may only be used for the purposes of the contract for which it was prepared. It is the responsibility of the user to ensure that the drawing is used for the intended purpose and not for any other purpose. Eberhard Manufacturing Company reserves the right to change the design, specifications, dimensions, tolerances, materials, and finishes without notice and without obligation. © 2012 Eberhard Manufacturing Company.

REVISION HISTORY

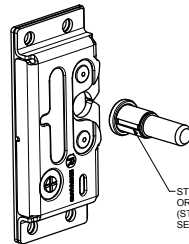
REV	DESCRIPTION	EN	DATE	REV. BY	APVD. BY
1	REVISED AND REDRAWN REF #19400	EN 5563	2/01/2013		
1	ADDED ISOMETRIC VIEW OF ROTARY AND STRIKER	EN 5551	2/15/2013		
2	REVISED DIMENSION	EN 5634	12/20/2013	SAJ	
3	BOLT RECOMMENDED WAS BUTTON HEAD CAP SCREW NOW SOCKET HEAD CAP SCREW. TORQUE WAS 1300in-lb NOW 204 in-lb. ADDED METRIC N.m. REMOVED REF. DIM 19 FROM VIEW A-A.	EN 5653	5/9/2014	KAB	MR
4	REVISED NOTE TO SPECIFY GREASE TYPE	EN5665	8/1/2014	KAB	MR
5	STICKER ADDED FOR RIGHT & LEFT IDENTIFICATION	EN5741	2/26/2016	KAB	MR



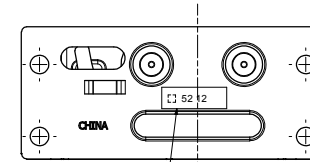
- NOTES:
- 1) THIS ROTARY LOCK ASSEMBLY MEETS ALL REQUIREMENTS FOR FMVSS 208 SAFETY STANDARD WHEN MOUNTED WITH (4) M8 X 1.25 - 6G SOCKET HEAD CAP SCREW CLASS 12.9 BOLTS AND .312 DIA. GRADE 8 BOLTS.
 - 2) RECOMMENDED TORQUE FOR TIGHTENING: 204 +/- 24 in.-lbs. [23 +/- 3 N.m]
 - 3) ROTARY TO BE USED WITH EBERHARD COMPLIANT FMVSS 208 STRIKER PIN PIN T-19400-52-65 OR EQUIVALENT.
 - 4) FINISH: (BG) GREASE ALL METAL TO METAL CONTACT POINTS WITH MOBILSHC 460 GREASE. REFERENCE EBERHARD GREASE P#17020



PERFORMANCE NOTE



ROTARY AND STRIKER WITH SLEEVE BODY SHOWN



CUSTOMER PRINT
SHEET 1 OF 2
RIGHT HAND SHOWN
LEFT HAND OPPOSITE

EBERHARD MANUFACTURING CO.
DIVISION OF
THE EASTERN COMPANY
CLEVELAND, OHIO 44116-9712

DIMENSIONS		TOLERANCES		FINISHES	
UNLESS OTHERWISE SPECIFIED	ALL DIMENSIONS ARE AS FOLLOWS:	FRAMES	FINISHES	STICKERS	DATE
ANGLES:	FRAMES	FRAMES	FRAMES	FRAMES	FRAMES
PLACES DEC:	FRAMES	FRAMES	FRAMES	FRAMES	FRAMES
ALL HOLES:	FRAMES	FRAMES	FRAMES	FRAMES	FRAMES

DUAL LATCH ROTARY LOCK ASSEMBLY

19400-RL

SUPERSEDES DRAWING 19400-RL SHEET 1 DATED 06/08/2012

C:\working_folder\pdm\pdm\19400-RL\19400-RL_SHT1.dwg