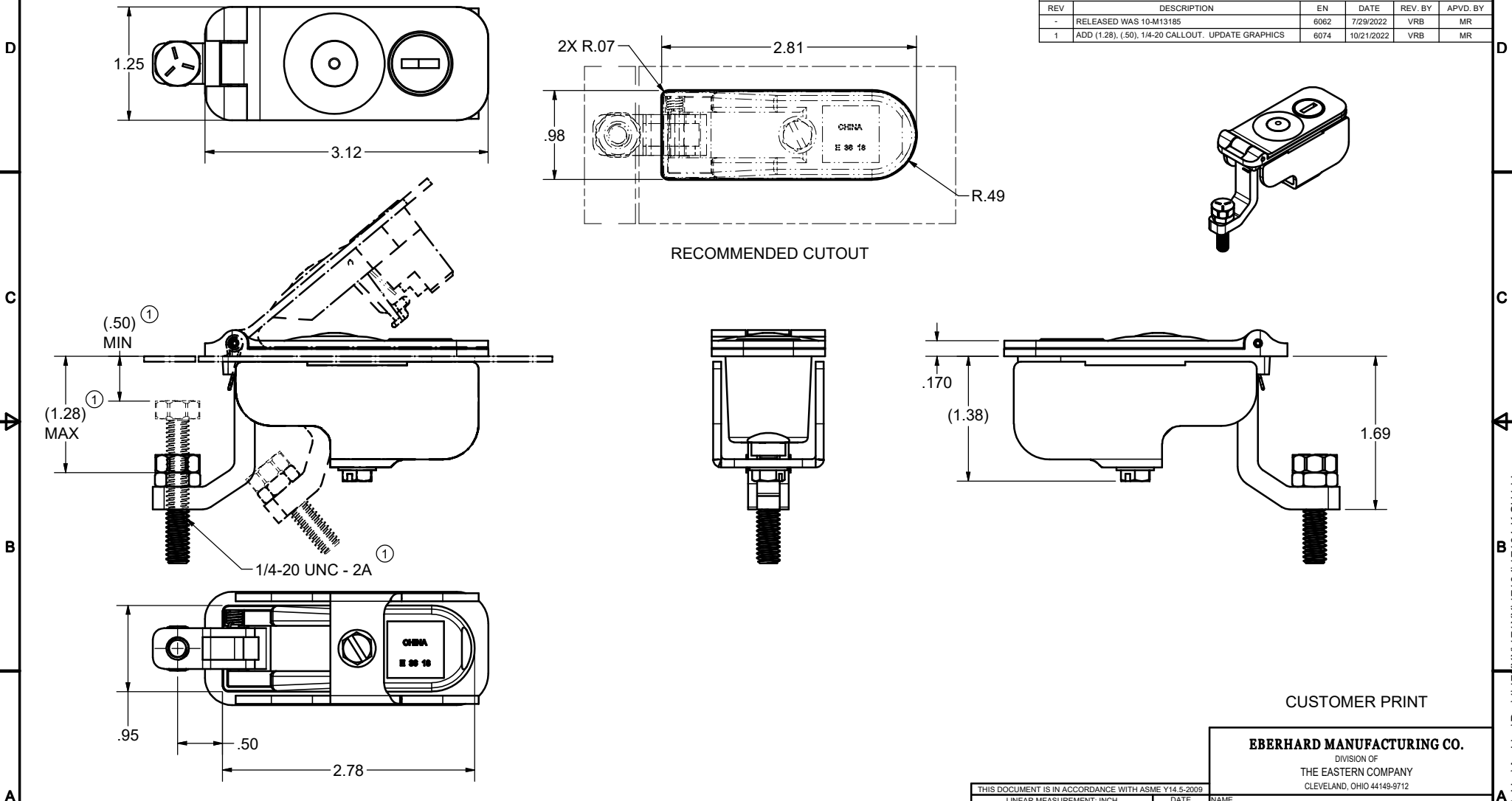


CONFIDENTIAL NOTICE: This drawing and the designs, specifications, and engineering information hereon are the property of Eberhard Manufacturing Company and are not to be disseminated or reproduced without express written consent. This drawing is loaned in confidence and then only for the consideration of the matter disclosed hereon. In accepting loan of this drawing, recipient agrees to keep it and the matter disclosed hereon in confidence and not to use or permit their use in any way detrimental to Eberhard Manufacturing Company, Division of The Eastern Company, 21944 Drake Road, Cleveland, Ohio, 44149-9712 © 2021 EBERHARD MFG. CO.

REVISION HISTORY					
REV	DESCRIPTION	EN	DATE	REV. BY	APVD BY
-	RELEASED WAS 10-M13185	6062	7/29/2022	VRB	MR
1	ADD (1.28), (.50), 1/4-20 CALLOUT. UPDATE GRAPHICS	6074	10/21/2022	VRB	MR



NOTES:
 FINISHES:
 (42) BLACK POWDER, TEXTURED FOR RECEPTACLE, BUTTON AND COVER
 AVAILABLE IN KEYS 501-510, AND 545

THIS DOCUMENT IS IN ACCORDANCE WITH ASME Y14.5-2009		DATE		NAME	
LINEAR MEASUREMENT: INCH		7/29/2022		SEALD TRIGGER LATCH, LOCKING	
UNLESS OTHERWISE SPECIFIED TOLERANCES ARE AS FOLLOWS:		DWN. BY		MATERIAL	
		ibetmot		PART NUMBER	
ANGLES:	± 2°	± 2°	SCALE	17134-K	
2 PLACE DEC.:	± .03	± .76	1:1		
3 PLACE DEC.:	± .015	± .38	CHK. BY		
ALL HOLES:	± .005	± .13			

CUSTOMER PRINT

EBERHARD MANUFACTURING CO.
 DIVISION OF
 THE EASTERN COMPANY
 CLEVELAND, OHIO 44149-9712