

CONFIDENTIAL NOTICE: This drawing and the designs, specifications and engineering information disclosed hereon are the property of Eberhard Manufacturing Company and are not to be disseminated or reproduced without express written consent. The drawing is loaned in confidence and then only for consideration of the matter disclosed hereon. In accepting loan of this drawing, recipient agrees to keep it and the matter disclosed hereon in confidence and not to use nor permit their use in any way detrimental to Eberhard Manufacturing Company, Division of the Eastern Company, 21944 Drake Road, Cleveland, Ohio 44149-9712 © 2012 EBERHARD MFG. CO.

ADAPTER W/SET SCREW
SCALE: FULL

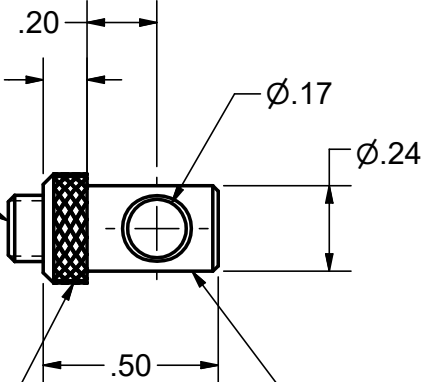
.09 HEX.

Ø.31

TYPE "C"
SET SCREW
LIGHT PHOSPHATE

KNURL FOR IDENTIFICATION
OF HEAT TREATED PARTS ①

ROD ADAPTER
ZINC PLATE



NOTES:

1. SUGGESTED PANEL THICKNESS #13 GAGE (.089)
2. RECOMMENDED CLEARANCE HOLE = .25 DIA.
3. MAX TORQUE TO TIGHTEN SET SCREW TO .156 DIA ROD = 10 in-lbs.

SUPERSEDES DRAWING 16619-15PK SH1 DATED 9-30-99.

CUSTOMER PRINT
SHEET 1 OF 2

REVISION HISTORY					
REV	DESCRIPTION	EN	DATE	REV. BY	APVD. BY
	CONVERTED TO 3D	5573	9-28-12		
1	ADD KNURL NOTE	5811	7-14-17	VRB	MR
2	UPDATE GRAPHICS TO SHOW SET SCREW PARTIALLY INSTALLED	5813	7/28/17	VRB	MR

LINEAR MEASURE: INCH		
UNLESS OTHERWISE SPECIFIED TOLERANCES ARE AS FOLLOWS:		
ANGLES:	IN ± 2'	MM ± 2'
2 PLACE DEC.:	± .03	± .76
3 PLACE DEC.:	± .015	± .38
ALL HOLES:	± .005	± .13

DATE 9/28/2012
DR. BY FLP
SCALE 2X
CHK. BY

EBERHARD MANUFACTURING CO.
DIVISION OF THE EASTERN COMPANY CLEVELAND, OHIO 44149-9712
THIS DOCUMENT IS IN ACCORDANCE WITH ASME Y14.15-2009

NAME ROD ADAPTER W/SET SCREW	
MATERIAL STEEL	PART NUMBER 16619-15PK

C:\Working_Folder\Archive\FASTENER\ADAPTERS\16619-15PK SH1.idw