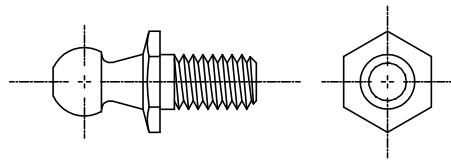
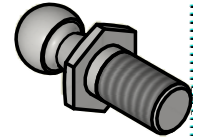
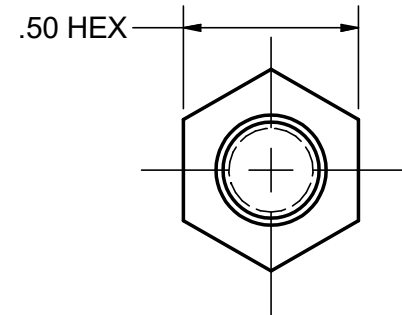
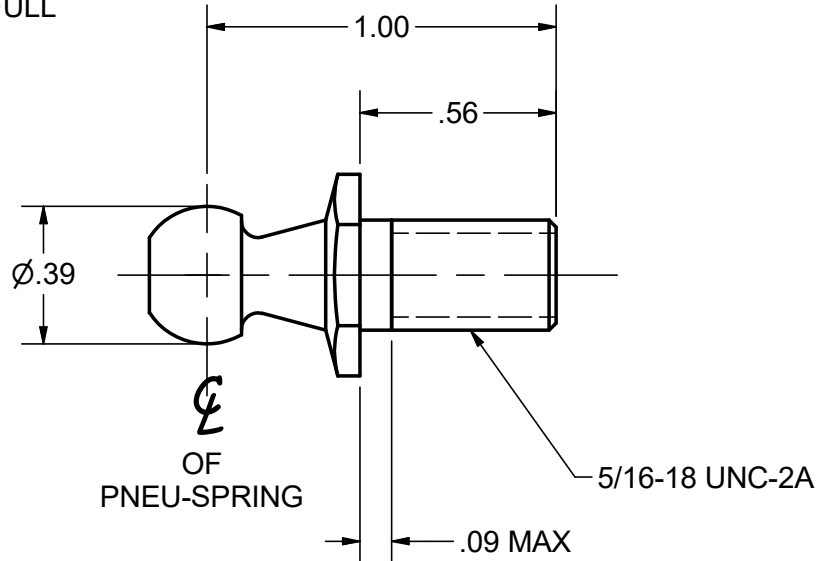


CONFIDENTIAL NOTICE: This drawing and the designs, specifications and engineering information disclosed herein are the property of Eberhard Manufacturing Company and are not to be disseminated or reproduced without express written consent. The drawing is loaned in confidence and then only for consideration of the matter disclosed herein. In accepting loan of this drawing, recipient agrees to keep it and the matter disclosed herein in confidence and not to use nor permit their use in any way detrimental to Eberhard Manufacturing Company, Division of the Eastern Company, 21944 Drake Road, Cleveland, Ohio 44149-9712 © 2014 EBERHARD MFG. CO.



SCALE: FULL



- NOTES:**
1. RECOMMENDED INSTALLATION TORQUE 12-15 FT*LB [16.3-20.3 N*m].
 2. MATERIAL:
 - ① A. COLD HEADED: C1022 CARBON STEEL
 - ② B. SCREW MACHINE: C1117 CARBON STEEL
 - ③ 3.) USE SAFETY CLIP PART NUMBER 16299-65.
 - ④ 4.) USE WITH EAA GAS SPRING SERIES.

SUPERSEDES DRAWING 16298 DATED 8-23-94.

CUSTOMER PRINT
SHEET 1 OF 2

LINEAR MEASURE: INCH				DATE	EBERHARD MANUFACTURING CO. DIVISION OF THE EASTERN COMPANY CLEVELAND, OHIO 44149-9712	NAME	
UNLESS OTHERWISE SPECIFIED TOLERANCES ARE AS FOLLOWS:				11/16/2012		BALL STUD 10 mm BALL	
ANGLES: $\pm 2'$ $\pm 2'$ 2 PLACE DEC.: $\pm .03$ $\pm .76$ 3 PLACE DEC.: $\pm .015$ $\pm .38$ ALL HOLES: $\pm .005$ $\pm .13$				DR. BY		MATERIAL	
				FLP	SEE NOTE		
				SCALE	PART NUMBER		
				2X	16298		
				CHK. BY	THIS DOCUMENT IS IN ACCORDANCE WITH ASME Y14.15-2009		

REV	DESCRIPTION	EN	DATE
3	ADDED NOTE #3 & #4	5743	03/11/2016
2	REVISED NOTE	5672	9-19-14
1	ADDED NOTE	5665	8-1-14
	CONVERTED TO 3D	5580	11-16-12

C:\TEMP\ba2bae-3f44-471f-8dfc-ea3d2c6ba1c8\FASTENER\GAS SPRINGS\16298 SH1.idw