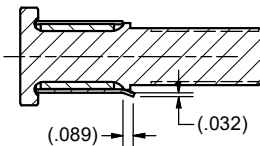
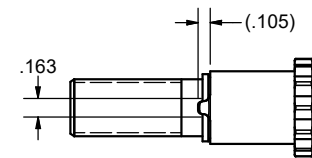
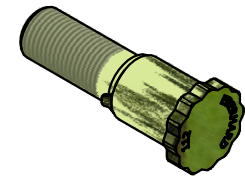
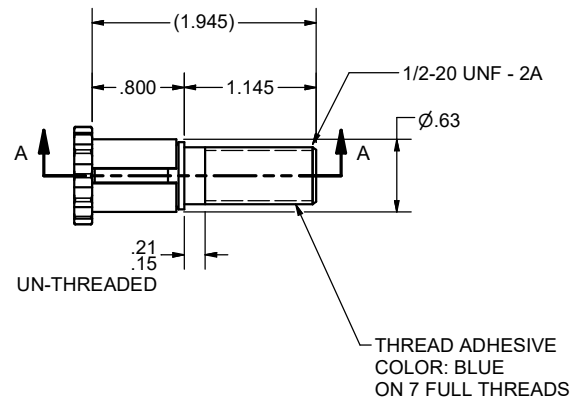


**CONFIDENTIAL NOTICE:** This drawing and the designs, specifications and engineering information disclosed herein are the property of Eberhard Manufacturing Company and are not to be disseminated or reproduced without express written consent. The drawing is loaned in confidence and then only for consideration of the matter disclosed herein. In accepting loan of this drawing, recipient agrees to keep it and the matter disclosed herein in confidence and not to use nor permit their use in any way detrimental to Eberhard Manufacturing Company, Division of the Eastern Company, 21944 Drake Road, Cleveland, Ohio 44149-9712 © 2012 EBERHARD MFG. CO.

REVISION HISTORY			
REV	DESCRIPTION	EN	DATE
	RELEASED, WAS M10673	EN 5566	8/10/2012
1	CHANGE INSTALL TORQUE RANGE, ADD GRADE NOTE	5641	2/14/2014



SECTION A-A  
SCALE 1 : 1

**NOTES:**

- 1) SAFETY RELATED ITEM, USED WITH PASSENGER DOOR LATCH.
- 2) THIS PART MUST COMPLY WITH FMVSS 206 DOOR LOCKS AND DOOR RETENTION COMPONENTS.
- ① 3) RECOMMENDED INSTALLATION TORQUE: 60-65 FT-LBS.
- 4) FINISH: (65) ZINC W/ YELLOW CONVERTER (.0005).
- ① 5) GRADE 8 EQUIVALENT.

CUSTOMER PRINT  
SHEET 1 OF 2

EBERHARD MANUFACTURING CO.  
DIVISION OF  
THE EASTERN COMPANY  
CLEVELAND, OHIO 44149-9712

THIS DOCUMENT IS IN ACCORDANCE WITH ASME  
Y14.15-2009

LINEAR MEASURE: INCH		DATE
UNLESS OTHERWISE SPECIFIED TOLERANCES ARE AS FOLLOWS:		8/7/2012
ANGLES:	± 2° ± 2°	DR BY
2 PLACE DEC:	± .03 ± .76	SAA
3 PLACE DEC:	± .015 ± .38	SCALE
ALL HOLES:	± .005 ± .13	FULL
		CHK BY

NAME	
12 POINT STRIKER WITH SLEEVE, 1/2-20	
MATERIAL	PART NUMBER
-----	12PT-19400-52