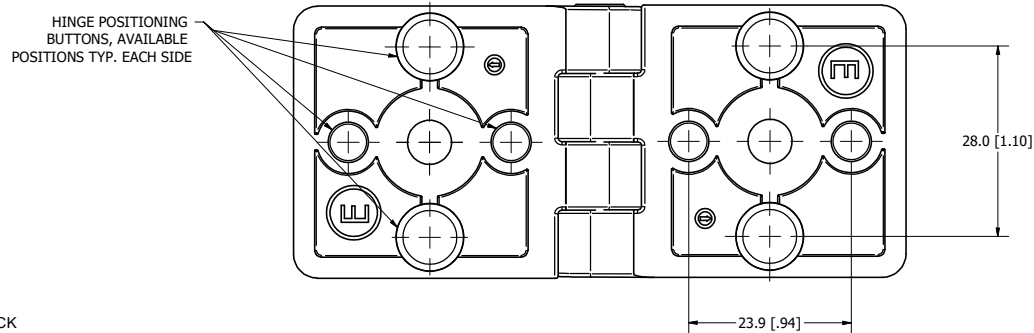
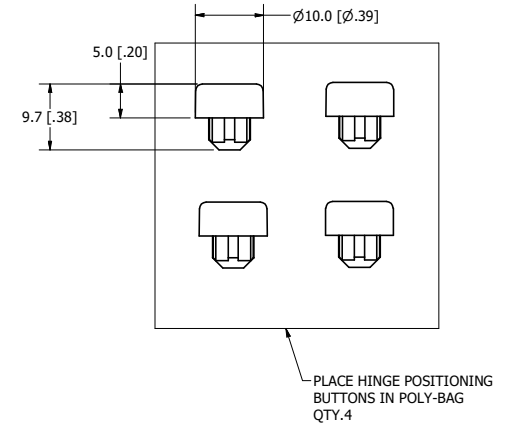
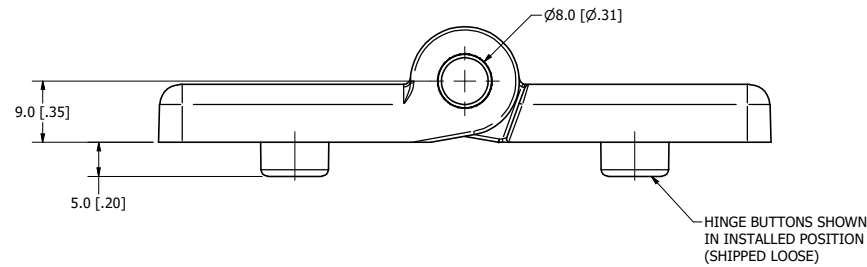
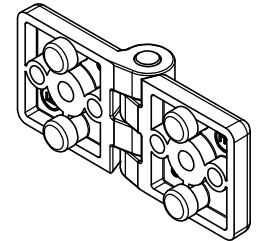
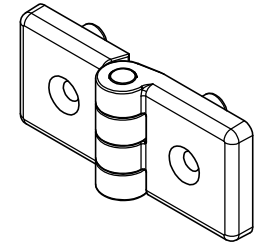
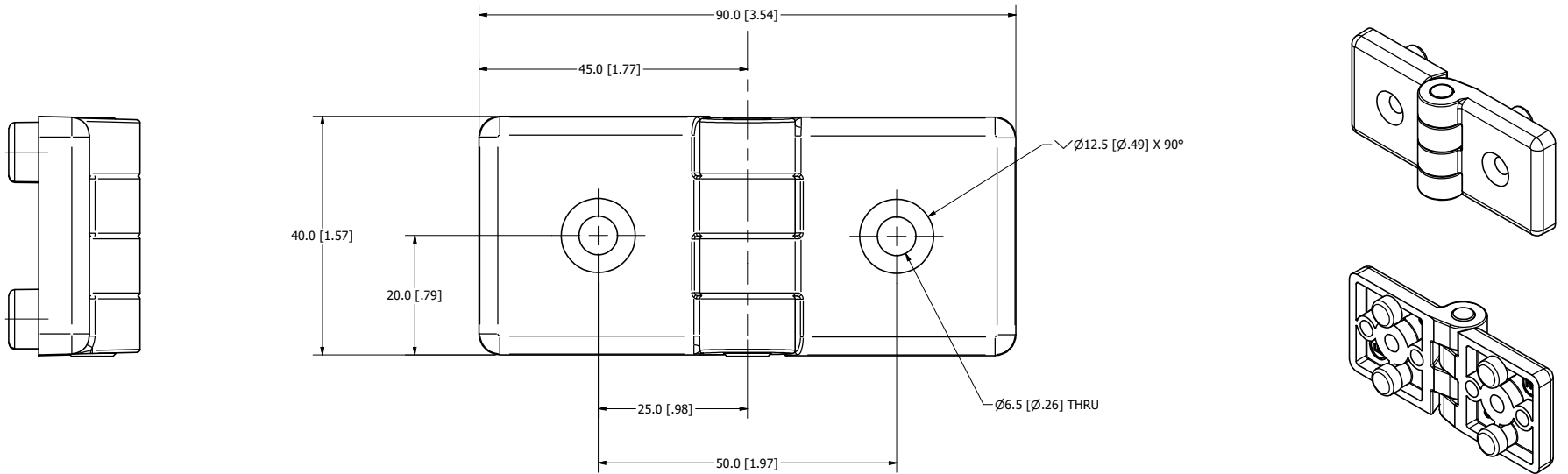


**CONFIDENTIAL NOTICE:** This drawing and the designs, specifications and engineering information disclosed hereon are the property of Eberhard Manufacturing Company and are not to be disseminated or reproduced without express written consent. The drawing is loaned in confidence and then only for consideration of the matter disclosed hereon. In accepting loan of this drawing, recipient agrees to keep it and the matter disclosed hereon in confidence and not to use nor permit their use in any way whatsoever to Eberhard Manufacturing Company, Division of the Eastern Company, 21844 Drake Road, Cleveland, Ohio 44149-9712, © 2017 EBERHARD MFG. CO.

REVISION HISTORY					
REV	DESCRIPTION	EN	DATE	REV. BY	APVD. BY
	RELEASE TO PRODUCTION/ REF:PP12072 WAS M12072-52	5819	9/8/2017	KAB	MR
1	ADDED BUTTON & SPACING DIMENSIONS, ADDED PIN MATERIAL	5827	11/3/2017	KAB	MR
2	REVISED TOLERANCE BLOCK WITH SPECIAL TOLERANCES	5831	12/8/2017	KAB	MR



- NOTE:  
 1) MATERIAL: PA 6 GF 30 NYLON BLACK  
 MATERIAL PIN: STAINLESS STEEL  
 2) FINISH: (MB) MATTE BLACK TEXTURE MT-1055  
 3) PART IS RoHS COMPLIANT

SPECIAL TOLERANCES		DATE		NAME	
UNLESS OTHERWISE SPECIFIED TOLERANCES ARE AS PER DIN- ISO 2768-M		9/7/2017		KAB	
DRAWN		SCALE		MATERIAL	
2:1		2:1		SEE NOTE	
CHK BY		PART NUMBER		12252-PK	

CUSTOMER PRINT SHEET 1 OF 2

**EBERHARD MANUFACTURING CO.**  
 DIVISION OF  
 THE EASTERN COMPANY  
 CLEVELAND, OHIO 44149-9712

**HINGE 45 SERIES 2 HOLE**