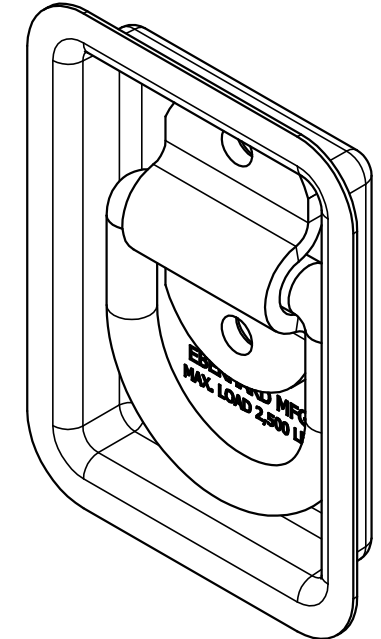
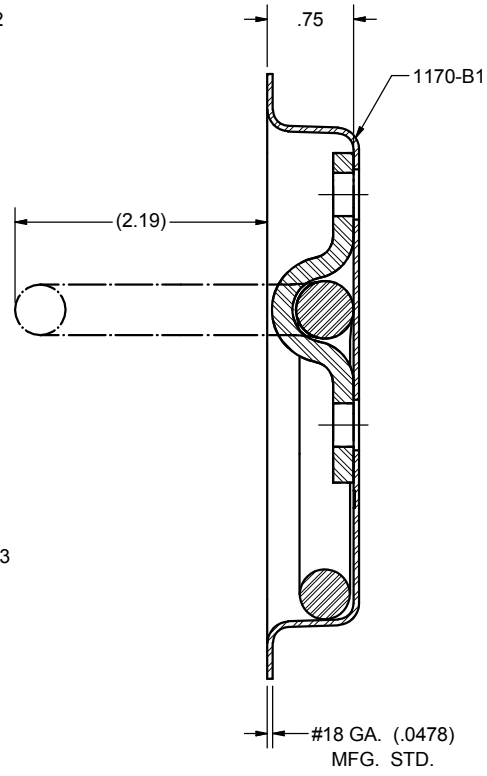
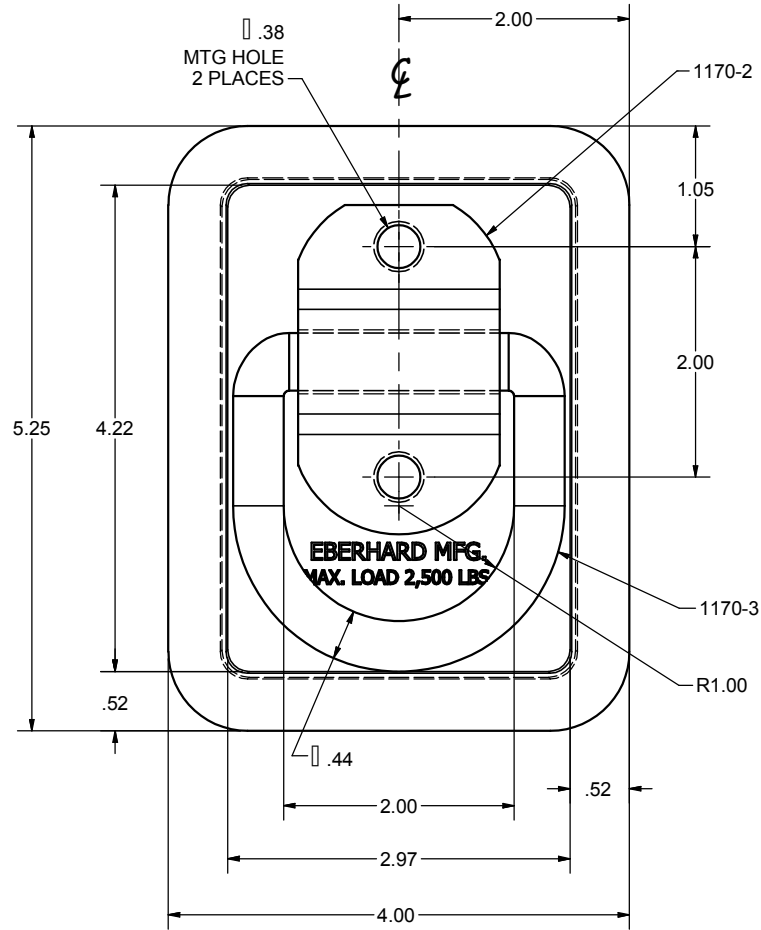


CONFIDENTIAL NOTICE: This drawing and the designs, specifications and engineering information disclosed hereon are the property of Eberhard Manufacturing Company and are not to be disseminated or reproduced without express written consent. The drawing is loaned in confidence and then only for consideration of the matter disclosed hereon. In accepting loan of this drawing, recipient agrees to keep it and the matter disclosed hereon in confidence and not to use nor permit their use in any way detrimental to Eberhard Manufacturing Company, Division of the Eastern Company, 21944 Drake Road, Cleveland, Ohio 44149-9712 © 2013 EBERHARD MFG. CO.

REVISION HISTORY					
REV	DESCRIPTION	EN	DATE	REV BY	APVD BY
1	CONVERTED TO 3D	5727	10-30-15	FLP	MR



- NOTES:
 1. PARTS 1170B-1, 1170-2 AND 1170-3 TO BE SHIPPED LOOSE.
 2. SUGGESTED MAXIMUM LOAD ON 1170-3 RING NOT TO EXCEED 2,500 LBS.

SUPERSEDES DRAWING 1170-B DATED 11-11-94.

THIS DOCUMENT IS IN ACCORDANCE WITH ASME Y14.15-2009	
LINEAR MEASURE: INCH	DATE: 10/30/2015
UNLESS OTHERWISE SPECIFIED TOLERANCES ARE AS FOLLOWS:	DR BY: FLP
ANGLES: $\begin{matrix} \text{IN} & \text{MM} \\ \text{2 PLACE DEC.: } \begin{matrix} \text{.03} & \text{.076} \\ \text{.015} & \text{.38} \\ \text{.005} & \text{.13} \end{matrix} \end{matrix}$	SCALE: FULL
	CHK BY:

EBERHARD MANUFACTURING CO. DIVISION OF THE EASTERN COMPANY CLEVELAND, OHIO 44149-9712	
NAME TIE DOWN ASSEMBLY	
MATERIAL: _____	PART NUMBER 1170-B

C:\Working_Folder\Archive\Pro\11170\1170-B.dwg