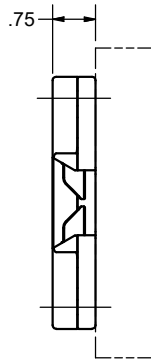
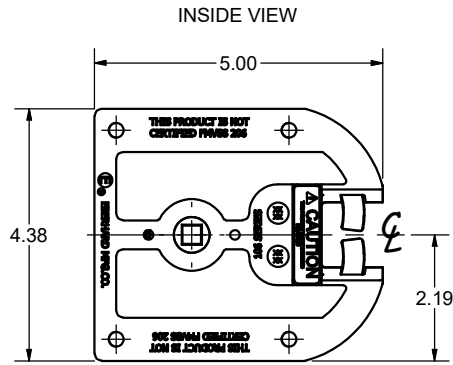


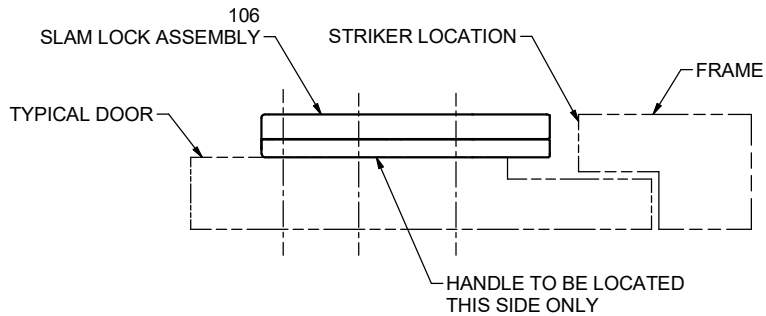
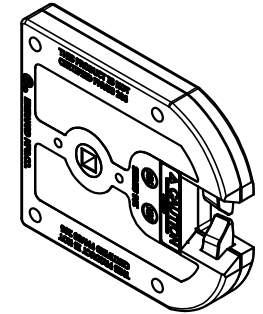
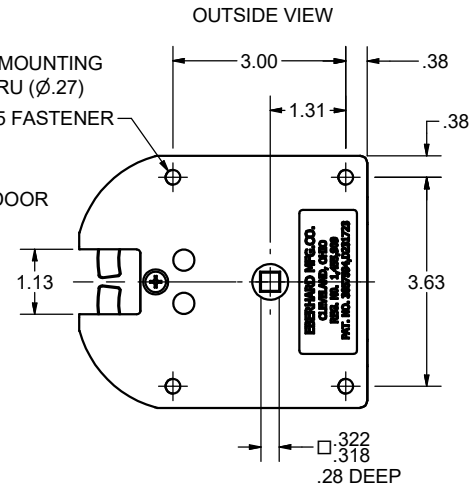
CONFIDENTIAL NOTICE: This drawing and the designs, specifications and engineering information disclosed hereon are the property of Eberhard Manufacturing Company and are not to be disseminated or reproduced without express written consent. The drawing is loaned in confidence and then only for consideration of the matter disclosed hereon. In accepting loan of this drawing, recipient agrees to keep it and the matter disclosed hereon in confidence and not to use nor permit their use in any way detrimental to Eberhard Manufacturing Company, Division of the Eastern Company, 21944 Drake Road, Cleveland, Ohio 44149-9712. © 2015 EBERHARD MFG. CO.

REVISION HISTORY					
REV	DESCRIPTION	EN	DATE	REV. BY	APVD. BY
	CONVERTED TO 3D	5692	2/27/2015	FLP	MR
1	REVISED CHART, REMOVED T-106	5870	9-14-18	FLP	MR



106 HAS 4 MOUNTING HOLES THRU (Ø.27) FOR A Ø.25 FASTENER

TYPICAL DOOR



CUSTOMER PRINT SHEET 1 OF 2

COMPARTMENT SLAM LOCK ASSEMBLY	
ASSEMBLY NO.	DESCRIPTION
106	SLAM LOCK WITH 4 MOUNTING HOLES (.26 DIA.)

EBERHARD MANUFACTURING CO. DIVISION OF THE EASTERN COMPANY CLEVELAND, OHIO 44149-9712	
COMPARTMENT SLAM LOCK ASSEMBLY	
MATERIAL	PART NUMBER 106

THIS DOCUMENT IS IN ACCORDANCE WITH ASME Y14.15-2009	
LINEAR MEASURE: INCH	DATE: 2/27/2015
UNLESS OTHERWISE SPECIFIED TOLERANCES ARE AS FOLLOWS:	DR. BY: FLP
IN MM	SCALE: HALF
ANGLES: ±2° ±2°	CHK. BY:
2 PLACE DEC.: ±.03 ±.76	
3 PLACE DEC.: ±.015 ±.38	
ALL HOLES: ±.005 ±.13	

NOTE: TO ORDER ASSEMBLY WITH STRIKER AS A KIT, ORDER P/N: 106-U.
TO ORDER STRIKER SEPERATELY, ORDER P/N: 16489.

SUPERSEDES DRAWING 106 SHEET 1 OF 2 DATED 4-6-04.