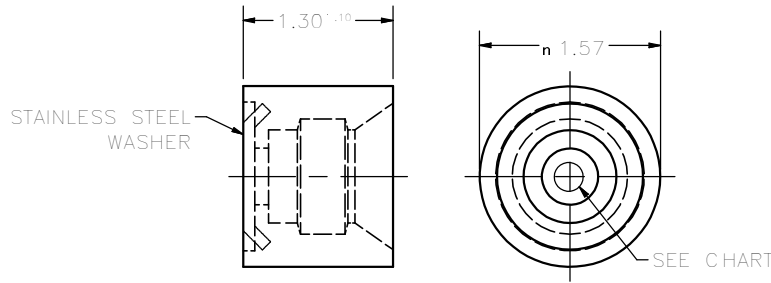


CONFIDENTIAL NOTICE: This drawing and the designs, specifications and engineering information disclosed hereon are the property of Eberhard Manufacturing Company and are not to be disseminated or reproduced without express written consent. The drawing is loaned in confidence and then only for consideration of the matter disclosed hereon. In accepting loan of this drawing, recipient agrees to keep it and the matter disclosed hereon in confidence and not to use nor permit their use in any way detrimental to Eberhard Manufacturing Company, Division of the Eastern Company, 21944 Drake Road, Cleveland, Ohio 44149-9712 © 2013 EBERHARD MFG. CO.

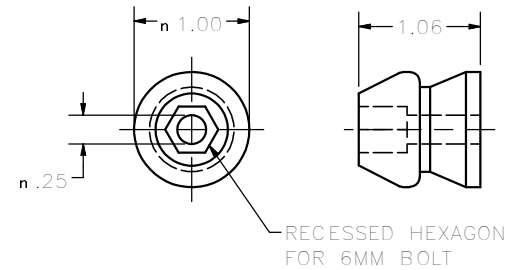
REVISION HISTORY			
REV	DESCRIPTION	EN	DATE
	CONVERTED TO 3D	5595	3-15-13

* PART NO.	STYRENE-BUTADIENE (SBR) SHORE "A"	FEMALE BASE	COLOR	WASHER HOLE	TYP. INSERT	TYP. EXTRACT	USABLE TEMP. RANGE °C/°F
1-775-2 (GY)	35-45	775-1 (GY)	GRAY	TAPPED 6MM	25 lbs.	26 lbs.	-20~/-4~ TO +100~/212~



FEMALE BASE

PART NO.: SEE CHART
 MATERIAL: SEE CHART
 COLOR: SEE CHART



MALE STEM

PART NO.: 666-2 (GY)
 MATERIAL: POLYPROPYLENE
 COLOR: GRAY
 USABLE TEMP. RANGE: -20°C/-4°F TO 50°C/122°F

NOTES:

- * PART NUMBER INCLUDES BOTH FEMALE BASE & MALE STEM PACKAGED IN A SECURE POLY BAG.
- TYPICAL LOADS ARE TO BE USED FOR REFERENCE ONLY AS ENVIRONMENTAL CONDITIONS AND PRODUCT APPLICATIONS WILL CAUSE VARIATIONS IN PERFORMANCE.

SUPERSEDES DRAWING 1-775-2 (GY) DATED 7-1-05.

CUSTOMER PRINT

EBERHARD MANUFACTURING CO.
 DIVISION OF
 THE EASTERN COMPANY
 CLEVELAND, OHIO 44149-9712

THIS DOCUMENT IS IN ACCORDANCE WITH <small>ASME Y14.15-2009</small>		DATE 3/16/2013	
UNLESS OTHERWISE SPECIFIED TOLERANCES ARE AS FOLLOWS:		DRAWN BY FLP	
LINEAR MEASURE: INCH	$\frac{1}{16}$	SCALE	FULL
ANGLES:	± 2°	CHECK BY	
2 PLACE DEC.:	± .03	MATERIAL	
3 PLACE DEC.:	± .015	SEE CHART	
ALL HOLES:	± .015	PART NUMBER	
		1-775-2 (GY)	