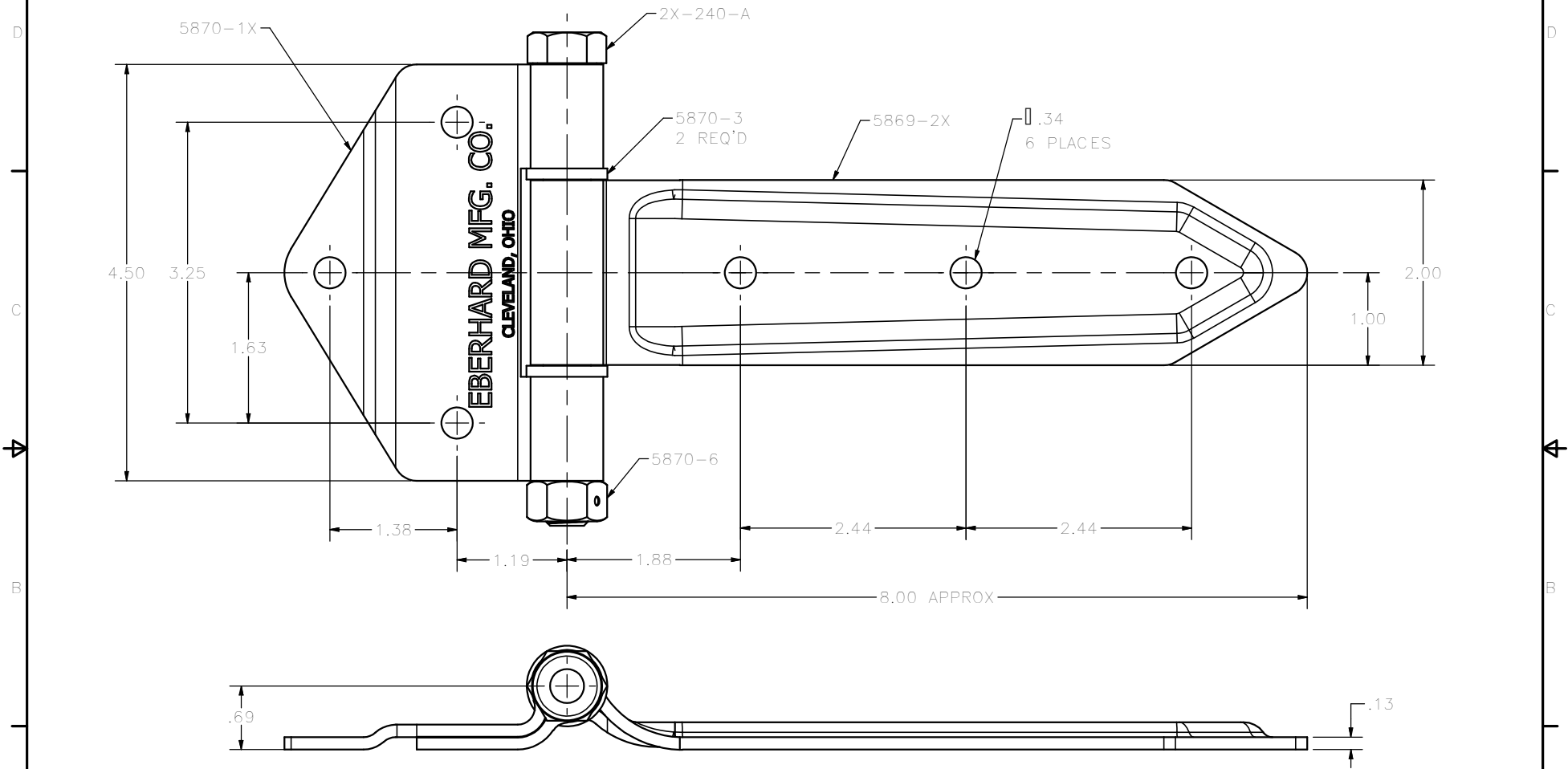


CONFIDENTIAL NOTICE: This drawing and the designs, specifications and engineering information disclosed hereon are the property of Eberhard Manufacturing Company and are not to be disseminated or reproduced without express written consent. The drawing is loaned in confidence and then only for consideration of the matter disclosed hereon. In accepting loan of this drawing, recipient agrees to keep it and the matter disclosed hereon in confidence and not to use nor permit their use in any way detrimental to Eberhard Manufacturing Company, Division of the Eastern Company, 21944 Drake Road, Cleveland, Ohio 44149-9712 © 2013 EBERHARD MFG. CO.

REVISION HISTORY			
REV	DESCRIPTION	EN	DATE
1	CONVERTED TO 3D	5619	8-30-13



SUPERSEDES DRAWING 1-5869-X DATED 8-19-83.

THIS DOCUMENT IS IN ACCORDANCE WITH		PART	
ASME Y14.15-2009		8/30/2013	
LINEAR MEASUREMENTS:		DATE	
UNLESS OTHERWISE SPECIFIED		DRAWN BY	
TOLERANCES ARE AS FOLLOWS:		FLP	
ANGLES:	0° 0'	SCALE	
2 PLACE DEC.:	0.03 0.76	FULL	
3 PLACE DEC.:	0.015 0.38	MATERIAL	
ALL HOLES:	0.015 0.25	CHK. BY	

EBERHARD MANUFACTURING CO.	
DIVISION OF	
THE EASTERN COMPANY	
CLEVELAND, OHIO 44149-9712	
NAME	STEEL HINGE ASSEMBLY WITH REMOVABLE PIN
MATERIAL	PART NUMBER
-----	1-5869-X

C:\Working\_Folder\Archive\Pro5\5869X11-5869-X.dwg